

SignWriting

Sign Languages Are Written Languages!



Manual 1: SignWriting Basics

by
Valerie Sutton

SignWriting

Sign Languages Are Written Languages!

Manual 1: SignWriting Basics

by
Valerie Sutton

ISBN: 978-0-914336-49-5
First Edition

Copyright © 2009
Center for Sutton Movement Writing, Inc.
All Rights Reserved

**The SignWriting System was first
invented by Valerie Sutton in 1974.**

**This book is based on the
Lessons in SignWriting® Textbook
by Valerie Sutton**

Cartoons by Frank Allen Paul
Illustrations by
Ida Candelaria & Jayne Gunderson

Photos of Kevin Clark & Lucinda O'Grady Batch
are captured from the
Lessons In SignWriting Video Series DVD

This book was prepared with SignPuddle Online.
SignPuddle Software by Stephen E. Slevinski, Jr

This manual is posted on the web:
SignWriting Lessons Online
<http://www.SignWriting.org/lessons>

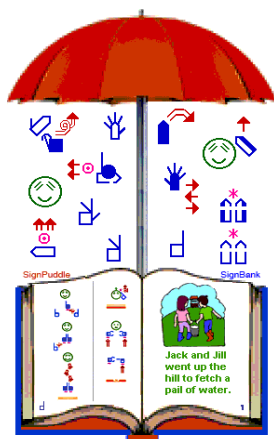
This publication and the SignWriting System are free
to use under the Creative Commons Attribution 3.0 License
<http://creativecommons.org/licenses/by/3.0/>

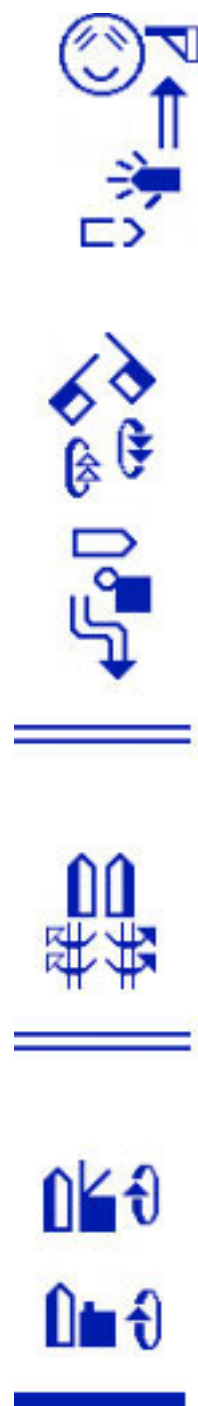
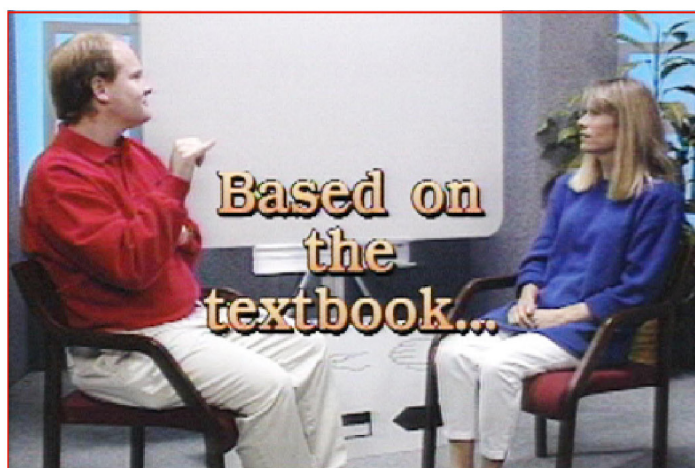
Published by
The SignWriting Press
<http://www.SignWriting.org/shop>

The SignWriting Literature Project
<http://www.SignWriting.org/literature>

Deaf Action Committee for SignWriting
<http://www.SignWriting.org/deaf>

Center for Sutton Movement Writing, Inc.
an educational 501c3 non-profit organization
P.O. Box 517 • La Jolla • CA • 92038-0517 • USA
SignWriting.org • SignBank.org • SignPuddle.org
Email: sutton@signwriting.org • Tel 858-456-0098





Learn SignWriting on the web!

Download books & view videos: www.SignWriting.org/lessons

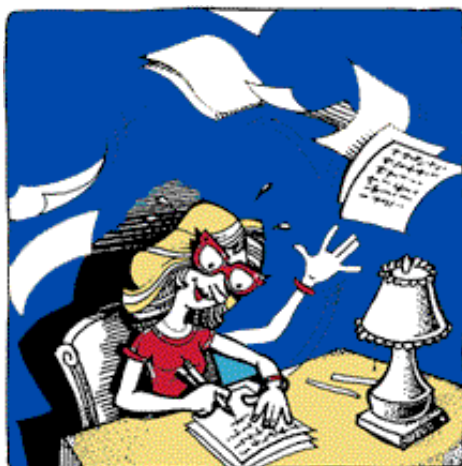
What Is SignWriting?



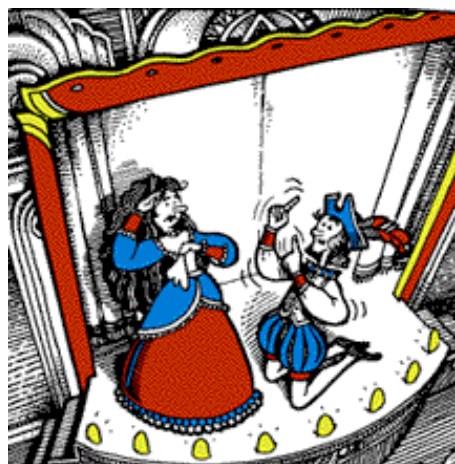
With SignWriting,
you can....



READ
Sign
Language



WRITE
Sign
Language



PRESERVE
Sign Poetry
and Theater

Write SignWriting on the web!

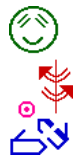
Write signs and Sign Language documents: www.SignPuddle.org



LEARN
Sign
Language



TRANSCRIBE
Sign
Language



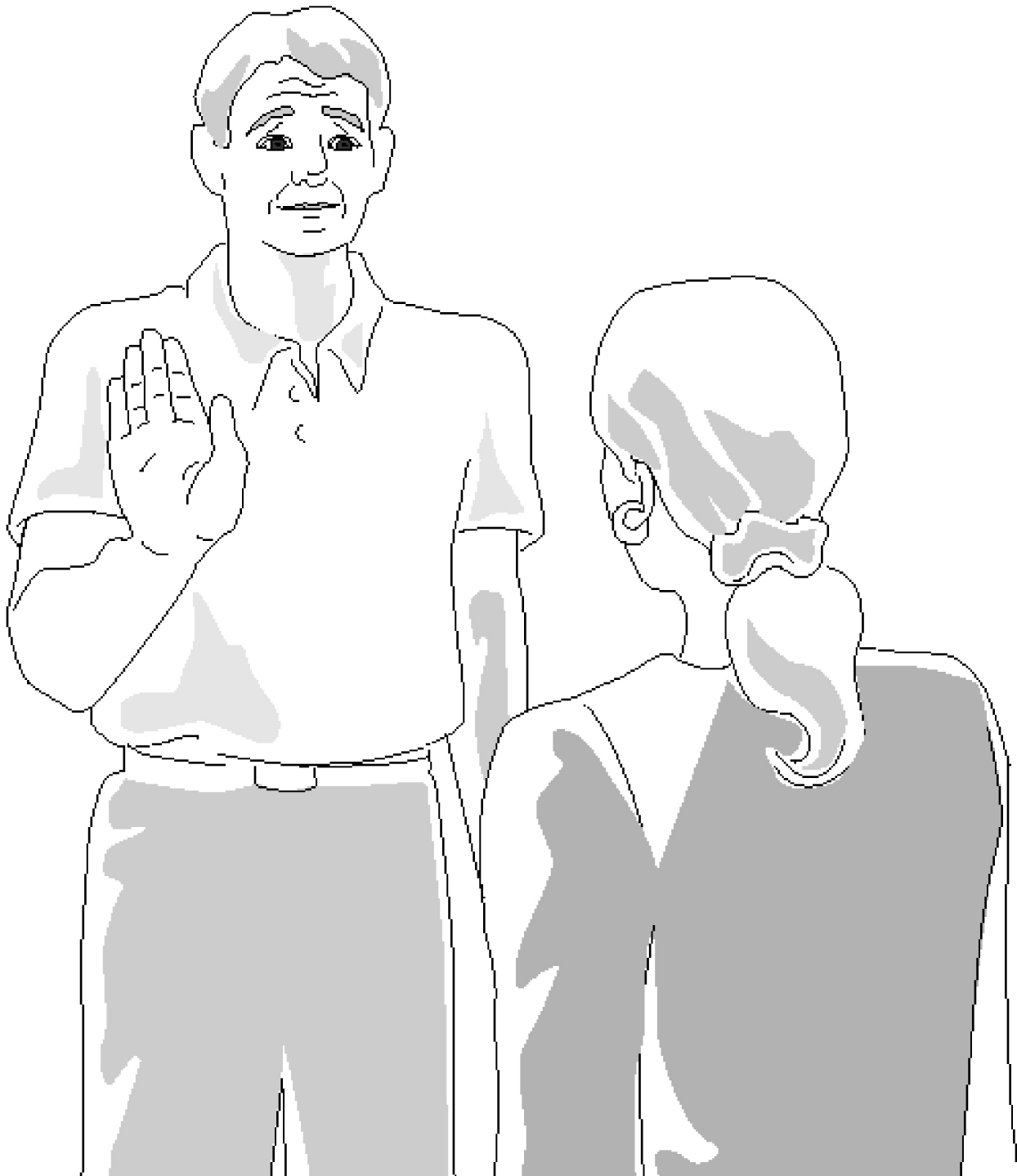
SHARE
Sign
Language



MEET Signers
Who Write
Sign Language Too!

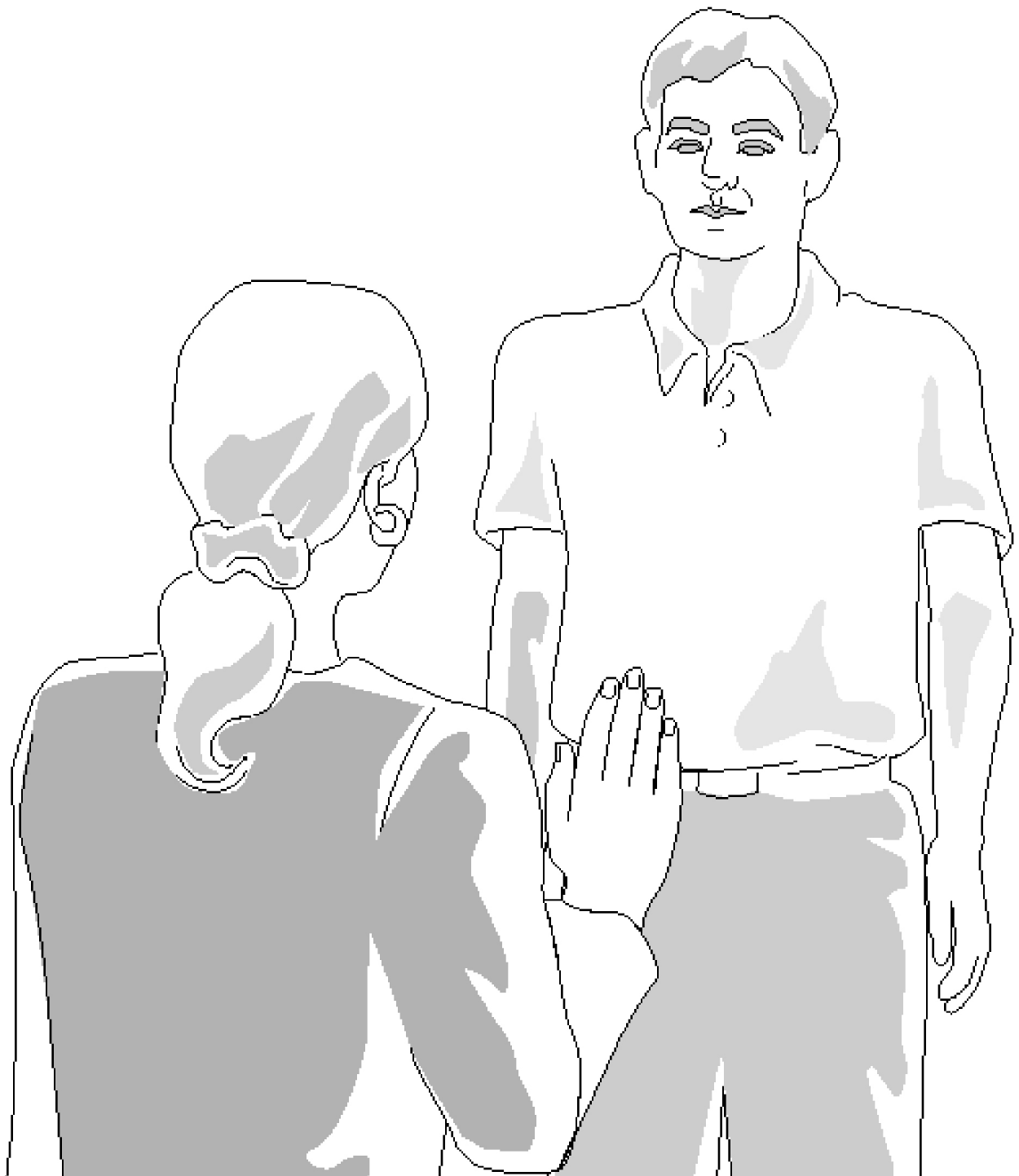
Join the SignWriting Email List!

Go to this web page to join: www.SignWriting.org/forums/swlist



Receptive Viewpoint

When someone is facing you, signing to you, you view the signs as an observer. The signer's right side is your left side. This is called the **Receptive Viewpoint**.



Expressive Viewpoint

When you are signing to someone else, you see signs from your own point of view.

This is called the **Expressive Viewpoint**.

The Expressive Viewpoint

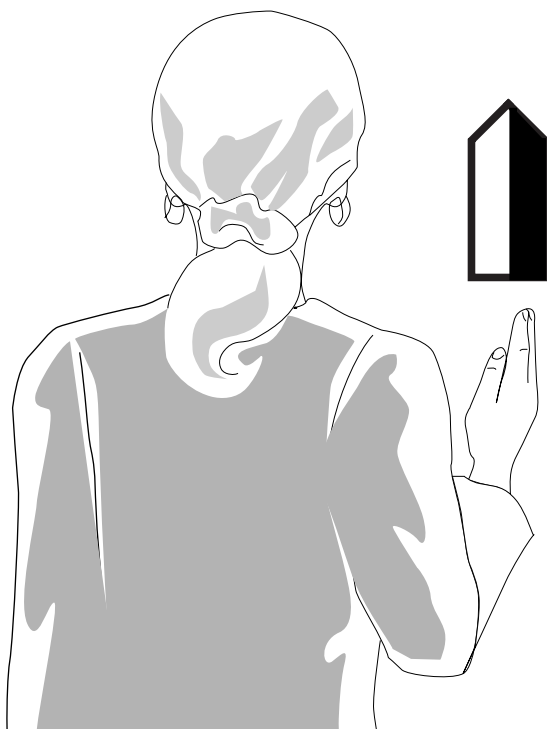
Read and write signs as if you are looking at your own hands, from your own perspective.



Palm of Hand

When you see the palm of your hand, while you are signing, the symbol for the hand will be white, or hollow.

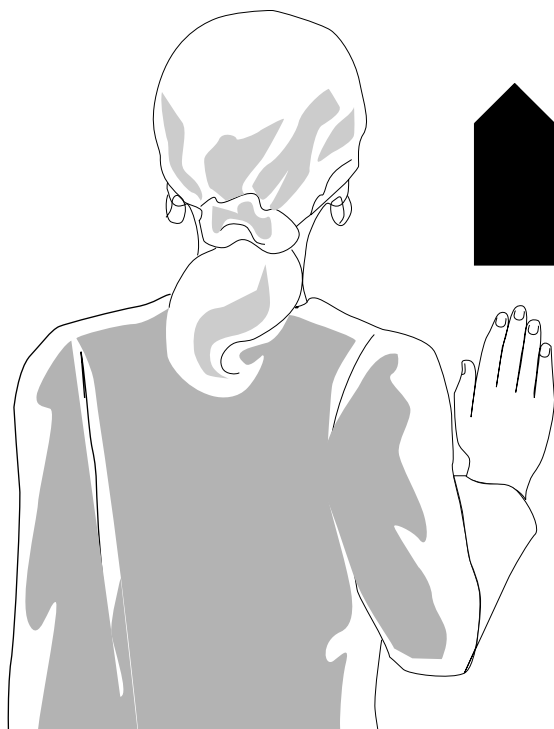
The palm of the hand is always written with a white, hollow symbol.



Side of Hand

When you see the side of your hand while you are signing, the symbol for the hand will be half black and half white.

The white part of the symbol shows where the palm of the hand faces. The dark part represents the back of the hand.



Back of Hand

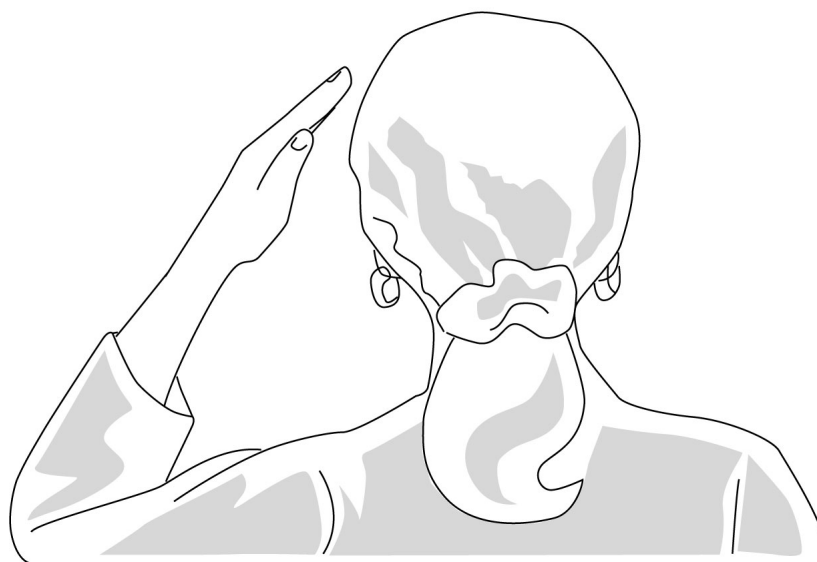
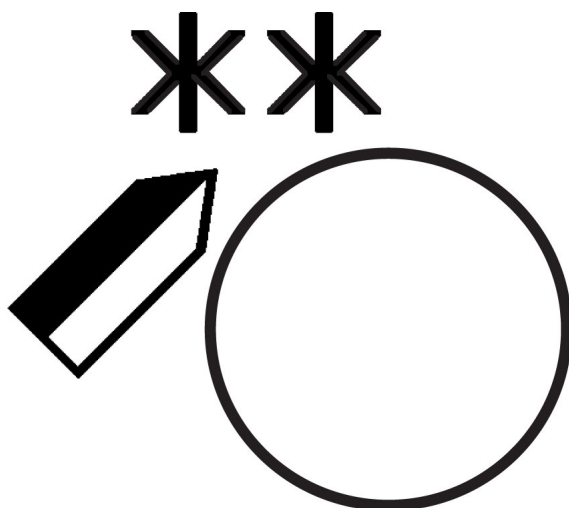
When you see the back of your hand while you are signing, the symbol will be black, or filled-in.

The back of the hand is always written with a black, filled-in symbol.



Left Side of Head

The head is written with a circle, viewed from the back. When the left hand is near the left side of the head, the symbol for the hand is placed to the left:



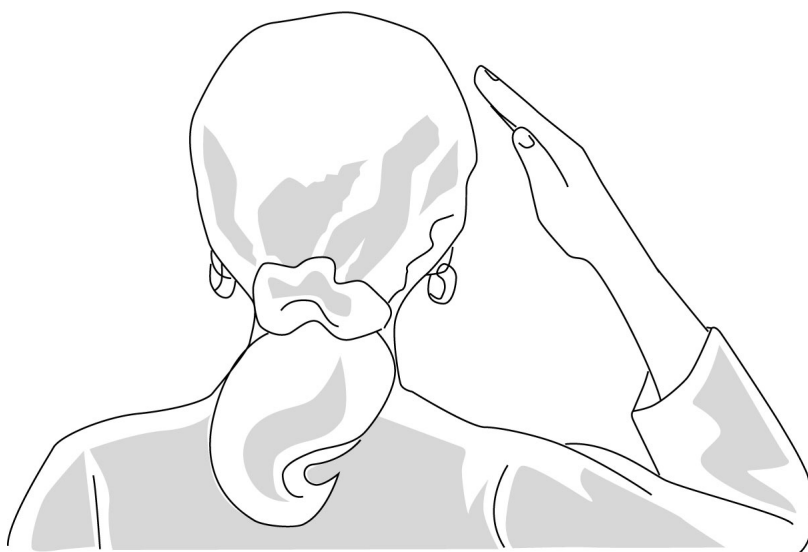
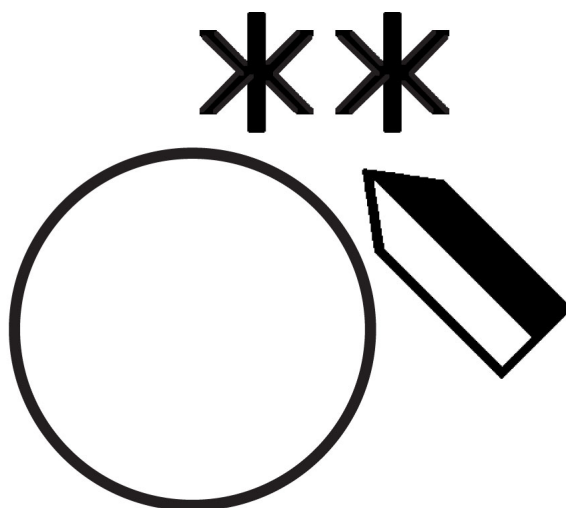
know
(hand on the left side)

Note: An asterisk means **touch**.
Two asterisks mean **touching two times**.



Right Side of Head

The head is written with a circle, viewed from the back. When the right hand is near the right side of the head, the symbol for the hand is placed to the right:



know

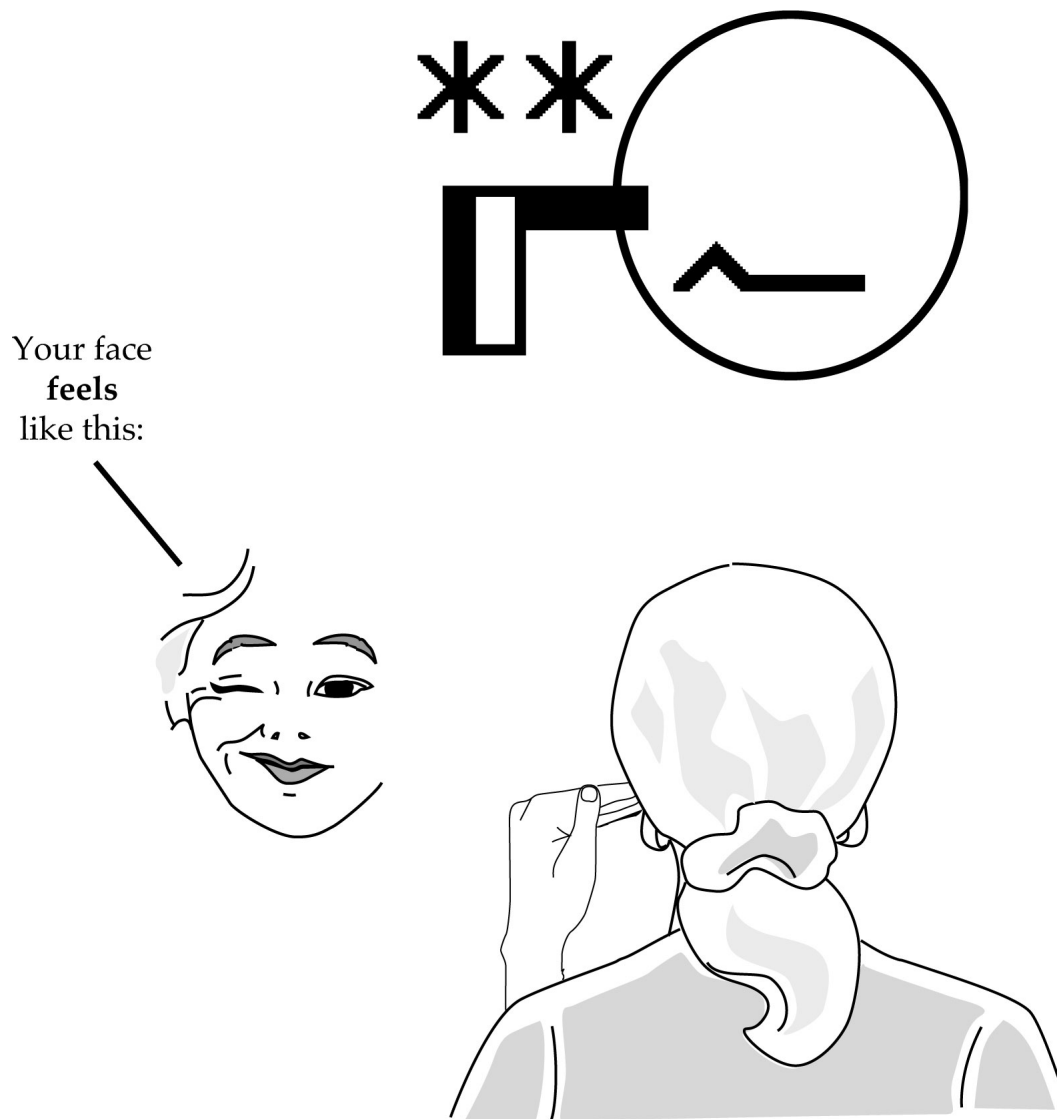
(hand on the right side)

Note: An asterisk means **touch**.
Two asterisks mean **touching two times**.



Left Side of Face

Pretend you can see through the back of the head.
You are reading and writing how your face “**feels**” when you sign:

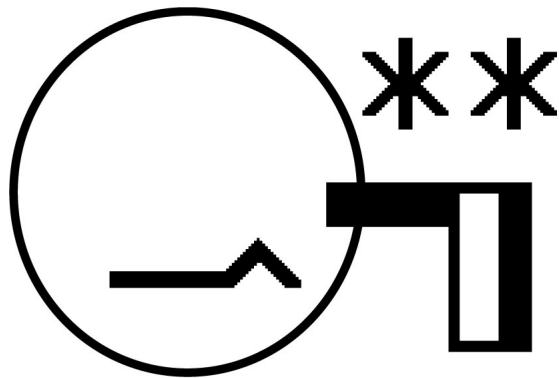


know

(mouth pushed up on left side)

Right Side of Face

Pretend you can see through the back of the head.
You are reading and writing how your face “**feels**” when you sign:



Your face
feels
like this:



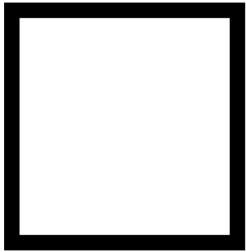
know

(mouth pushed up on right side)



3 Basic Handshapes

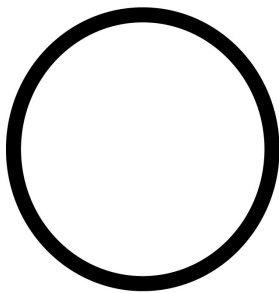
Closed Fist



When the fingertips touch the palm of the hand, it is called a **Closed Fist**.

A **Closed Fist** is written with a square.

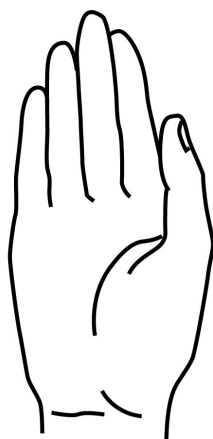
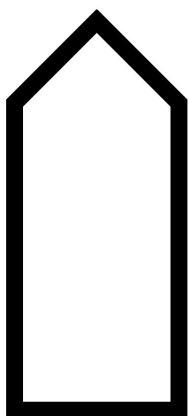
Open Fist



When the fingertips touch each other, it is called an **Open Fist**.

An **Open Fist** is written with a circle.

3 Basic Handshapes



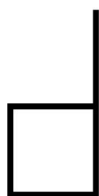
Flat Hand

When the fingers stretch straight up, and touch each other, it is called a **Flat Hand**.

A **Flat Hand** is written with a rectangle, with a tip for the fingertips.

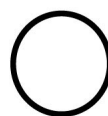
Closed Fist

Both the letter S and the number 1 in ASL are written with a square for the Closed Fist, since the fingertips touch the palm:



Open Fist

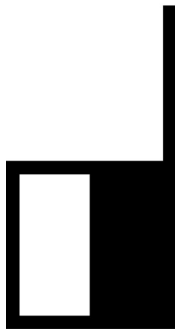
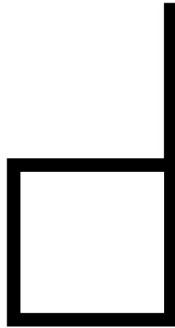
Both the letter O and the letter D in ASL are written with a circle for the Open Fist, since the fingertips touch each other:



Palm Facing

Front View

The hand is parallel with the front wall.

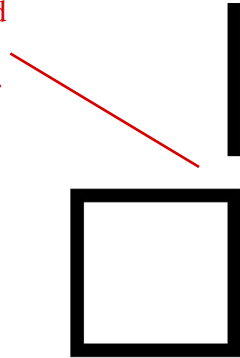


Palm Facing

Top View

The hand is parallel with the floor.

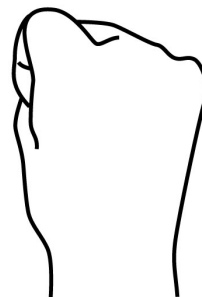
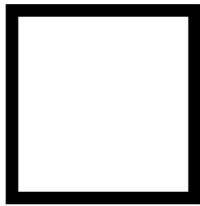
space at
knuckle joint
means hand
is parallel
to the floor



Palm Facing

Front View

The hand is parallel with the front wall.

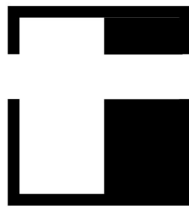
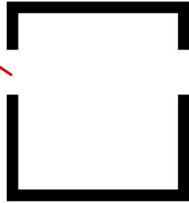


Palm Facing

Top View

The hand is parallel with the floor.

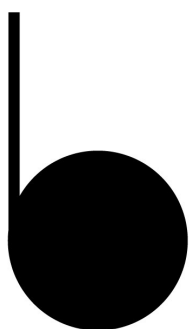
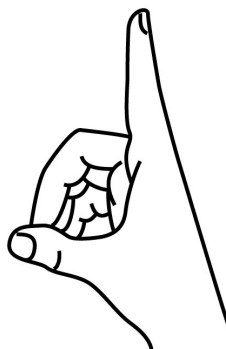
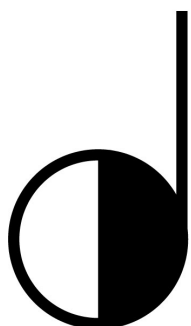
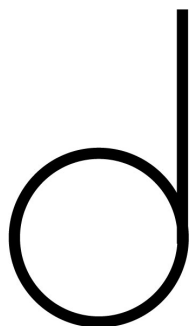
space at
knuckle joint
means hand
is parallel
to the floor



Palm Facing

Front View

The hand is parallel with the front wall.

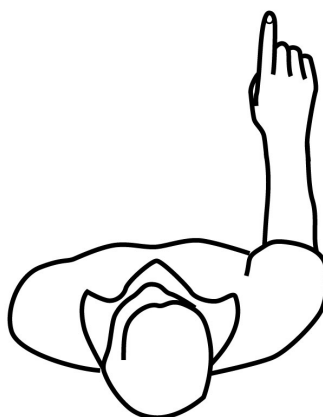
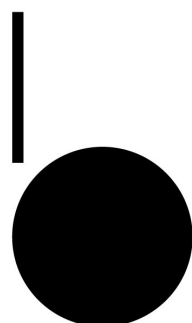
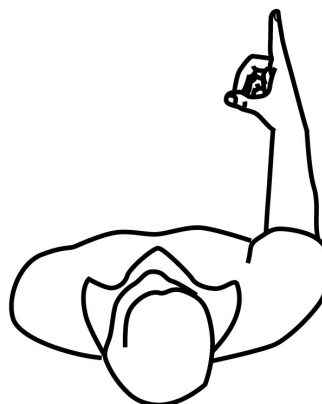
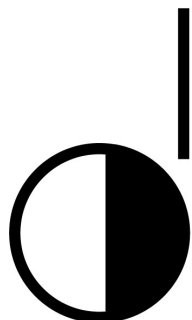
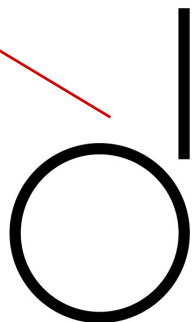


Palm Facing

Top View

The hand is parallel with the floor.

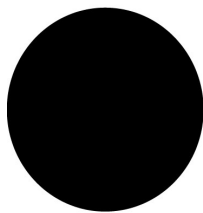
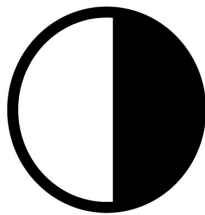
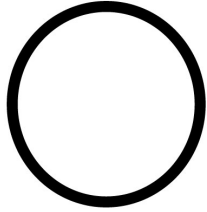
space at
knuckle joint
means hand
is parallel
to the floor



Palm Facing

Front View

The hand is parallel with the front wall.

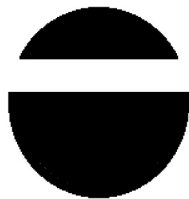
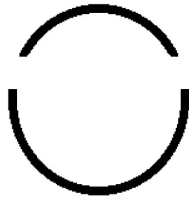


Palm Facing

Top View

The hand is parallel with the floor.

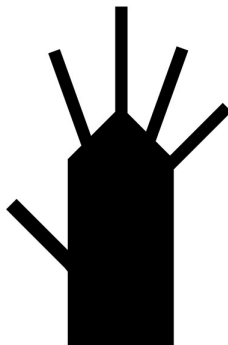
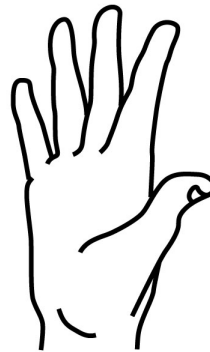
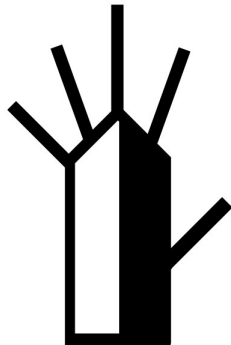
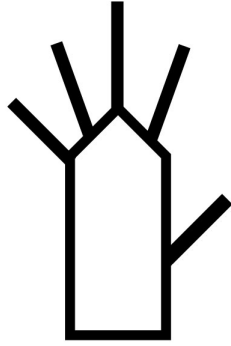
space at
knuckle joint
means hand
is parallel
to the floor



Palm Facing

Front View

The hand is parallel with the front wall.

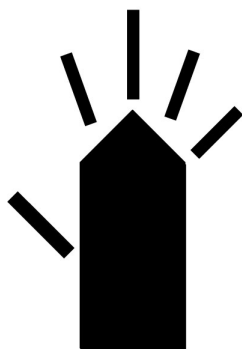
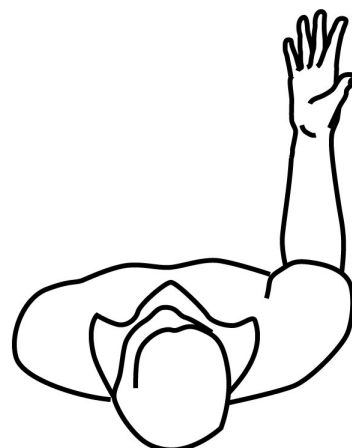
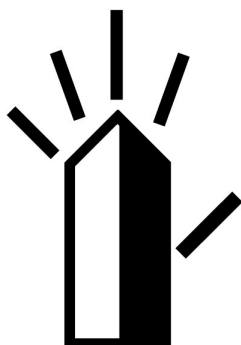
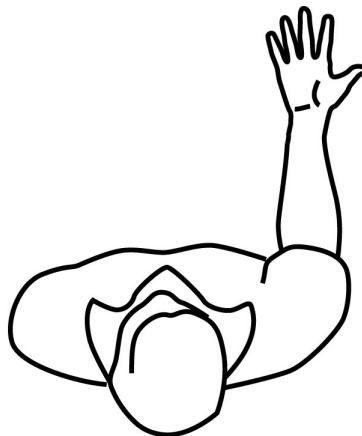
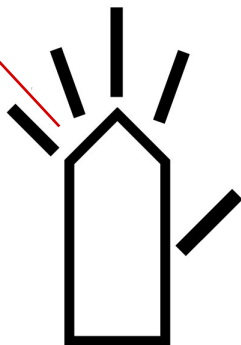


Palm Facing

Top View

The hand is parallel with the floor.

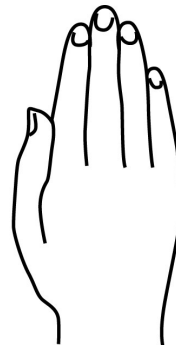
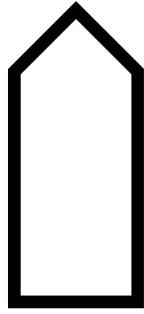
space at
knuckle joint
means hand
is parallel
to the floor



Palm Facing

Front View

The hand is parallel with the front wall.

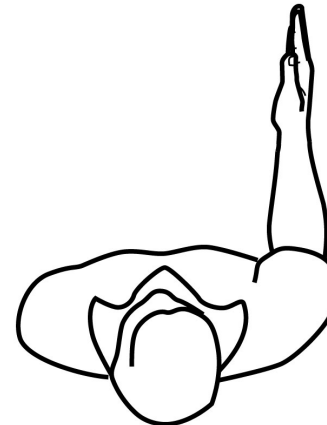
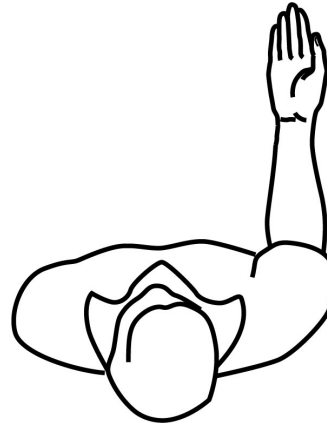
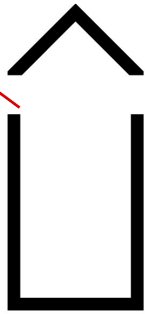


Palm Facing

Top View

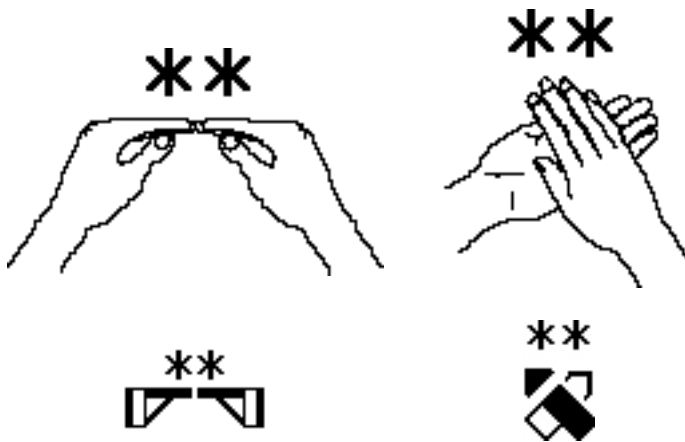
The hand is parallel with the floor.

space at
knuckle joint
means hand
is parallel
to the floor




6 Contact Symbols

*	1. Touch
+	2. Grasp
*	3. Between
#	4. Strike
⊙	5. Brush
@	6. Rub



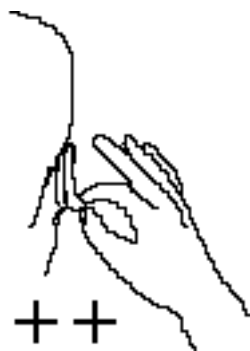
more

school


Touch

Touch Contact is written with an asterisk.

Touch is defined as the hand gently contacting another part of the body.



earring



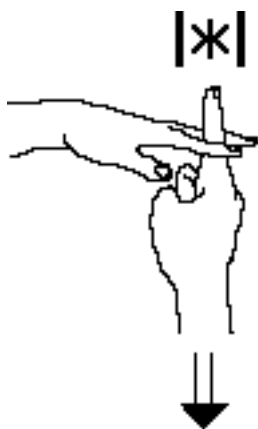
congratulations



Grasp

Grasp Contact is written with two crossed lines.

Grasp is defined as the hand grasping or pinching a part of the body or a prop, such as clothing.



disappear



America



Between

Between Contact is written with a Contact Symbol between two lines.

Between is defined as contacting between two fingers or other parts of the body.

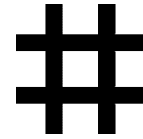




hit



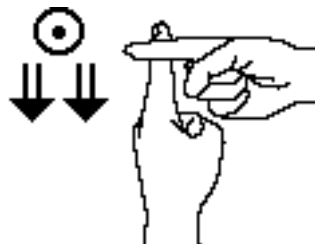
clap



Strike

Strike Contact is written with two lines crossing two lines.

Strike is defined as the hand contacting a surface **with force**.



excuse me



monthly



Brush

Brush Contact is written with a circle with a dark dot in the center.

Brush is defined as movement that first **contacts** and then **moves off** the surface.



Circular Rub

Circular Rub Contact is written with a spiral.

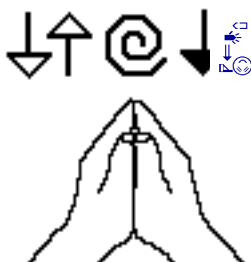
Rub is defined as contact that moves, but **stays on the surface**.



coffee



chocolate



Straight Rub

Straight Rub Contact is written with the same spiral symbol, but the spiral symbol is **connected with a straight arrow**.

When the Rub Contact symbol is **connected with an arrow**, it rubs in a straight line (not in a circle). It stays on the surface but moves in the direction of the arrow.



neat



eager



6 Finger Symbols



1. Squeeze, Middle Joint Closes



2. Flick, Middle Joint Opens



3. Hinge, Knuckle Joint Closes



4. Hinge, Knuckle Joint Opens



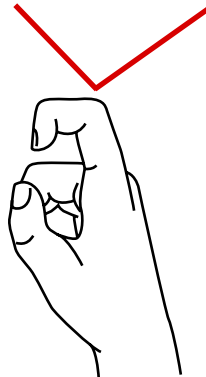
5. Hinge, Knuckles Open & Close Together



6. Trill, Knuckles Open-Close Alternating



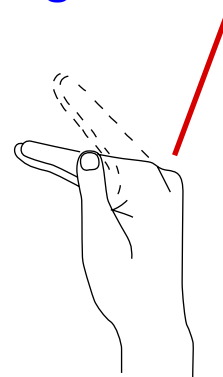
**Middle Joint
Squeeze & Flick**



Middle Joint Finger Movements, also called Squeeze and Flick Movements, are written with small dots.



**Knuckle Joint
Hinge & Trill**



Knuckle Joint Finger Movement, also called Hinge and Trill Movements, are written with small arrows.

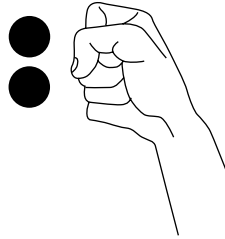


Middle Joint

Closes

When the middle joint of the finger squeezes tight (bends down or in), this **closing finger movement** is written with a **dark dot**.

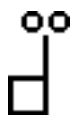
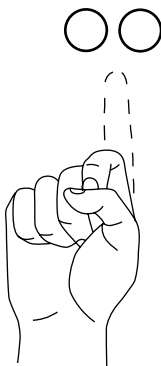
The dot is placed near the finger joint that does the squeezing. Two dots represent two squeezes..



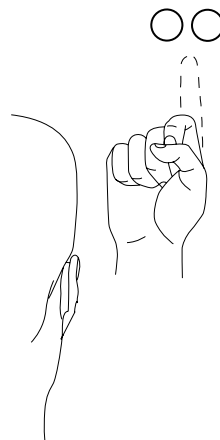
huh?



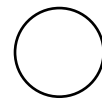
milk



eleven



understand



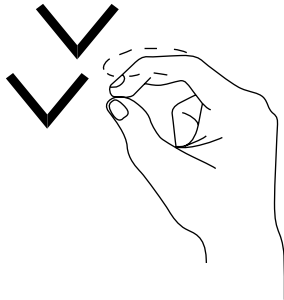
Middle Joint

Opens

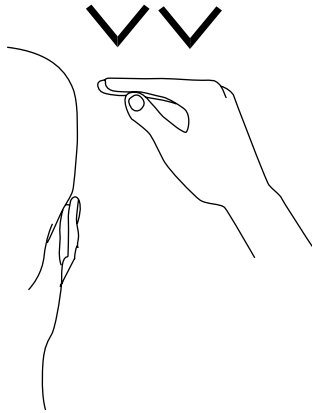
When the middle joint of the finger flicks open (goes from bent to straight), this **opening flicking movement** is written with a **hollow dot**.

The dot is placed near the finger that flicks. Two dots represent two flicks.





twenty



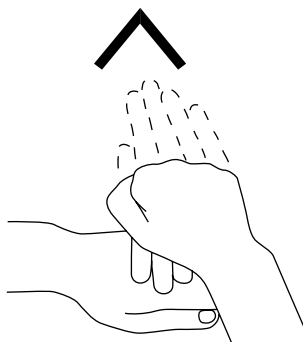
boy



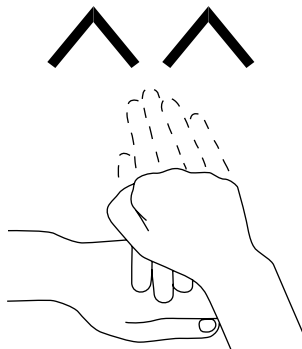
Knuckle Joint

Closes

The middle joint of the finger locks, while the knuckle joint bends down, like the Hinge on a door. This **closing knuckle movement** is written with a small arrow that points down. The arrow **pushes** the fingers down. Two arrows mean 2 hinges.



send



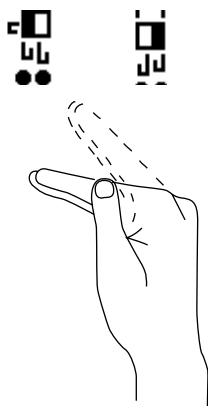
send-send



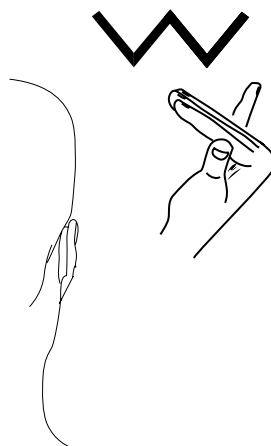
Knuckle Joint

Opens

The middle joint of the finger locks, while the knuckle joint bends up, like the Hinge on a door. This **opening knuckle movement** is written with a small arrow that points up. The arrow **pulls** the fingers up. Two arrows mean 2 hinges up.



goodbye

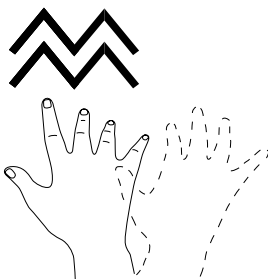


why

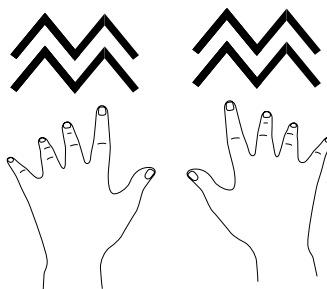


Knuckle Joints Open-Close

The fingers move together in the same direction, as a unit. The knuckle-joints of the fingers open and close (bend up and down) together. This **open-close knuckle movement** is written with one row of small connected arrows pointing up and down.



fingerspell



typing

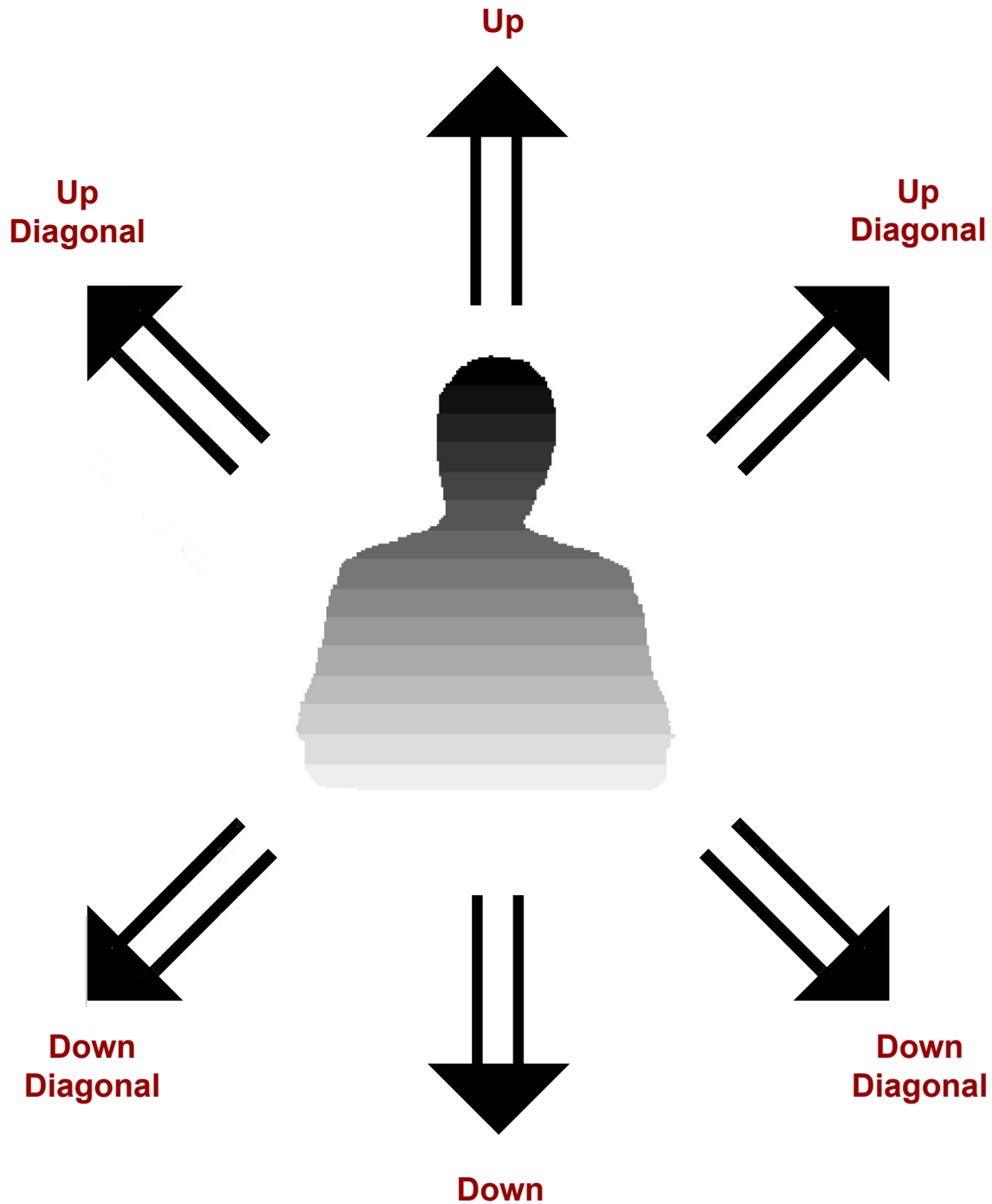


Knuckle Joints Alternate

The fingers do not move together in a unit. Instead they hinge in opposite directions. One moves up, as the other moves down. This **Alternating Finger Movement**, also called **Finger Trills**, is written with two rows of small arrows pointing up and down.

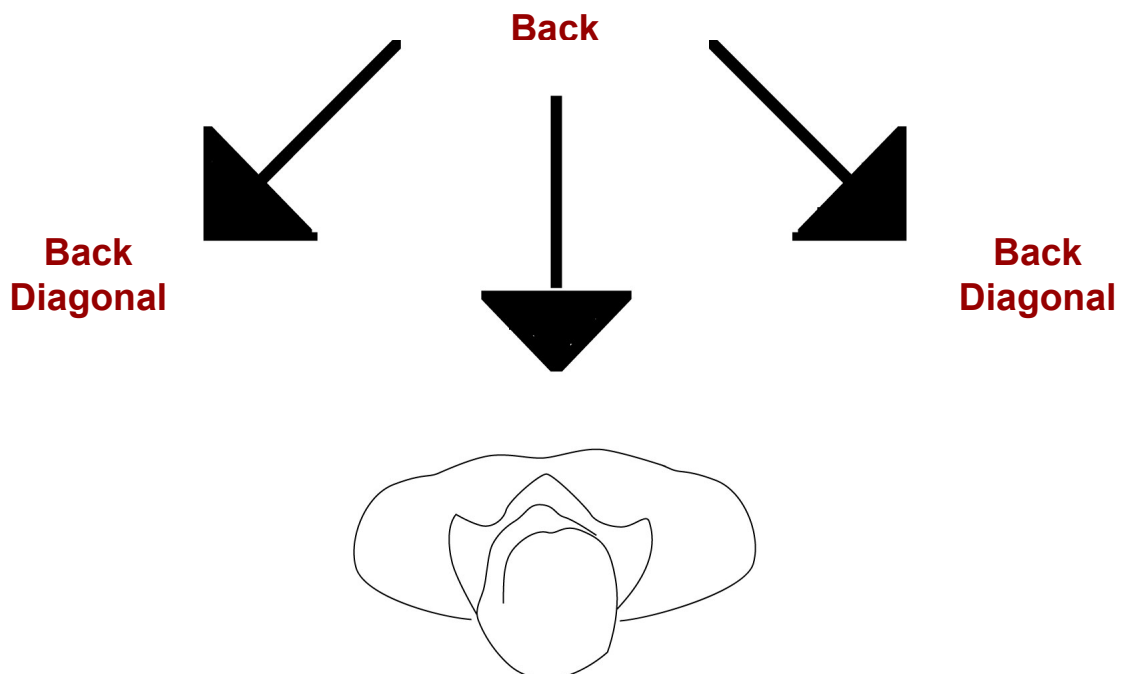
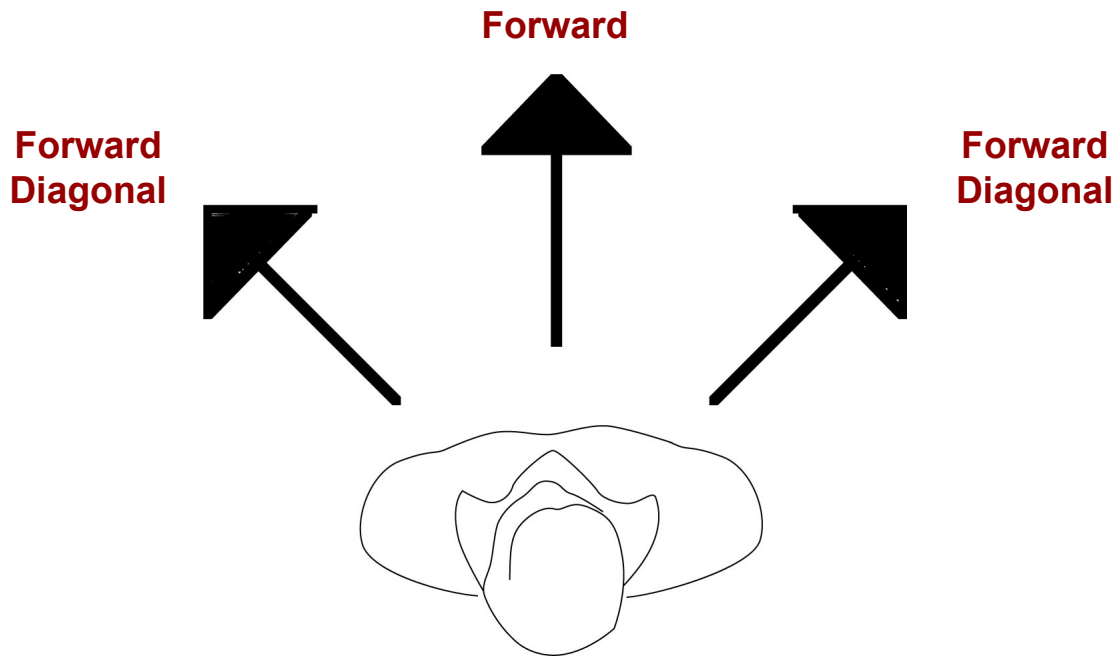
Up-Down Movement

Up-Down Movement is parallel with the Front Wall or your chest.
It is written with double-stemmed arrows:



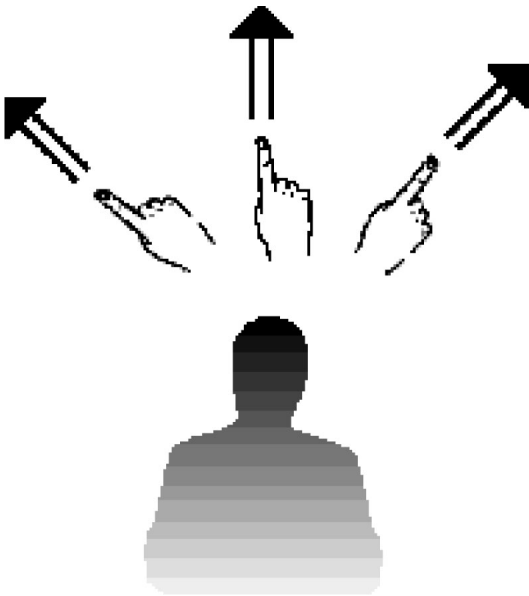
Forward-Back Movement

Forward-Back Movement is parallel with the Floor or a table top.
It is written with single-stemmed arrows:

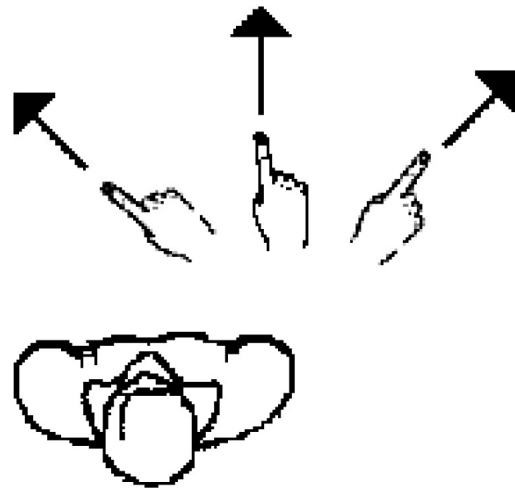


Movement With The Right Hand

A dark arrowhead.



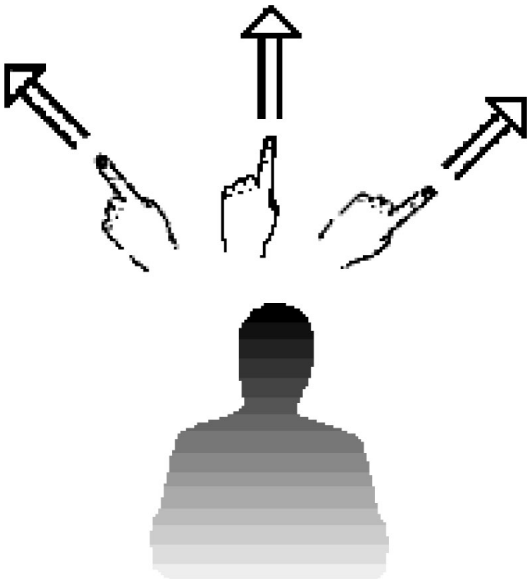
Front View



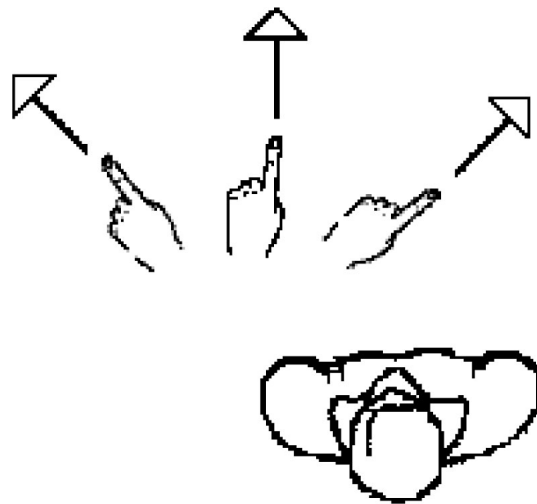
Top View

Movement With The Left Hand

A light arrowhead.



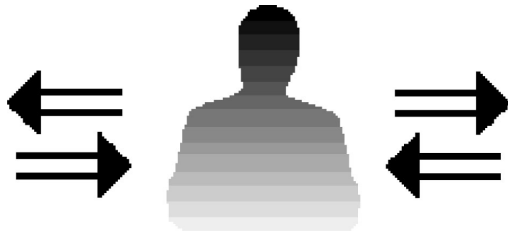
Front View



Top View

Movement To The Side

Movement to the side can be viewed from either the Front View or the Top View. It can be written with either double-stemmed or single-stemmed arrows.



Front View



Top View

General Arrowhead Writes Overlapping Paths

When a right movement arrow writes **ON TOP OF** a left movement arrow, the two movement paths **overlap each other**. The two arrows blend together. The dark arrowhead and the light arrowhead become one arrowhead, called the **General Arrowhead**.

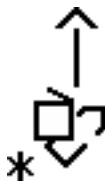
Often the hands are contacting when moving in overlapping paths, but it is **NOT ONLY** for contacting hands. For example, two hands can be parallel, side by side, without contact, and then both move to the same side, so that the right arrow writes on top of the left arrow. This creates a **General Arrowhead**.



I help you.



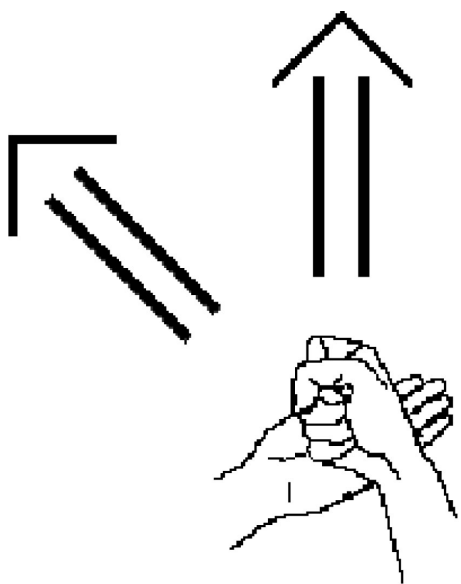
follow



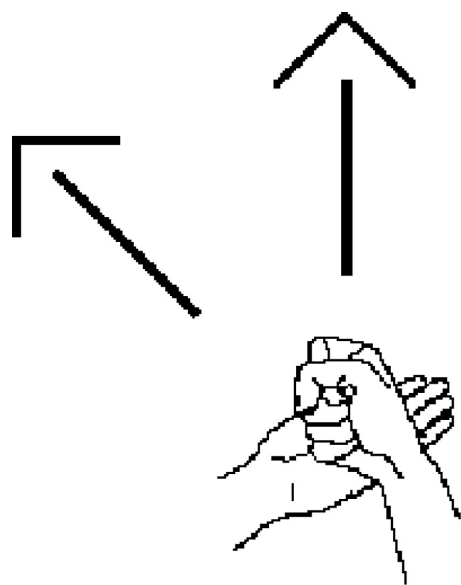
plan



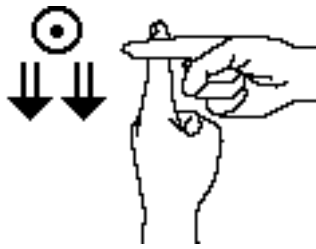
Do not confuse these arrows:



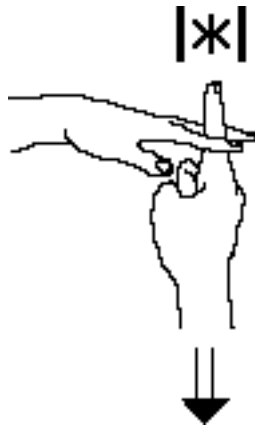
double
stemmed
arrows
mean
movement
is **UP**



single
stemmed arrows
mean
movement
is **FORWARD**



monthly



disappear

Straight Movement



Up or Down

A double-stemmed arrow means that the movement is straight up or down, parallel with the front wall. The movement is flat with the front of your body.



excuse me



eager

Straight Movement



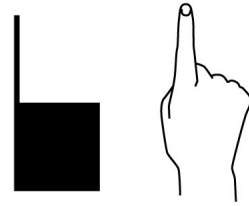
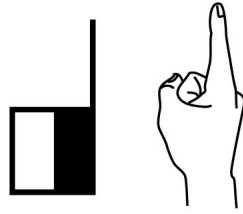
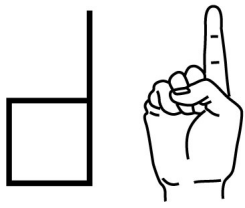
Forward or Back

A single-stemmed arrow means that the movement is forward or back, parallel with the floor. You are looking down, on top of the movement.



Front View

Hands parallel with the Front Wall.



one half



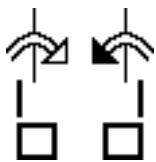
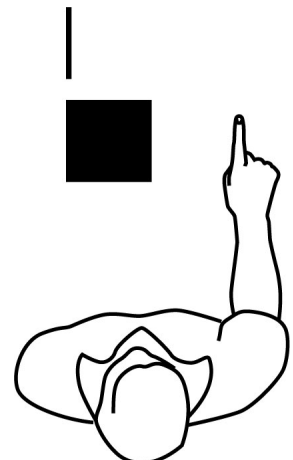
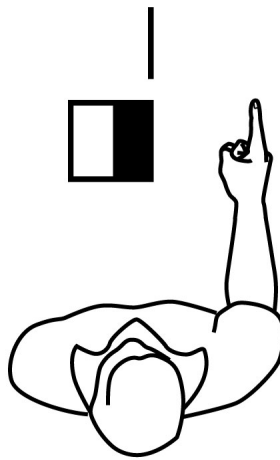
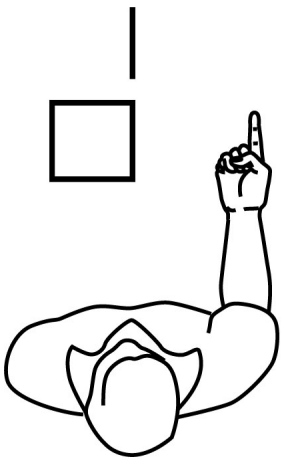
Deaf



where

Top View

Hands parallel with the Floor.



happen



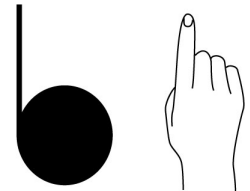
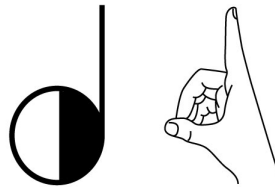
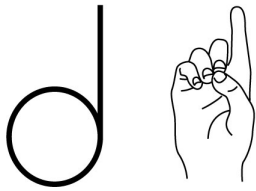
you



also

Front View

Hands parallel with the Front Wall.



dinner



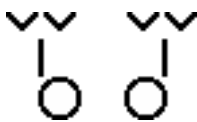
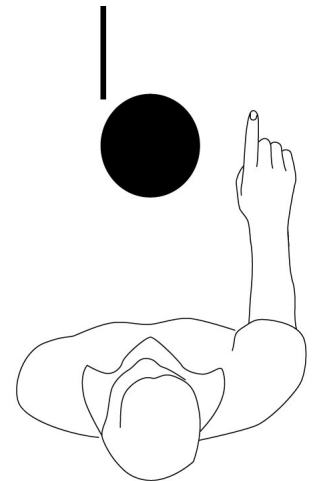
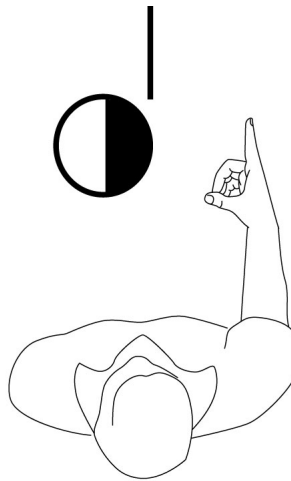
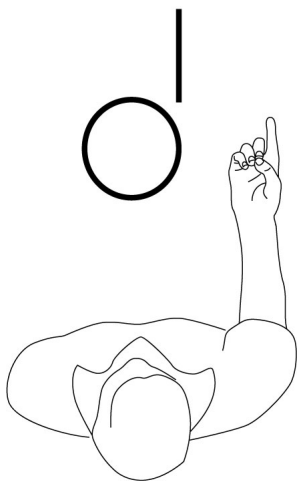
dating



democracy

Top View

Hands parallel with the Floor.



do-do?



dessert

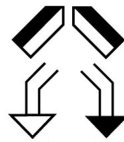
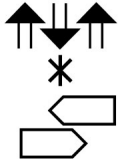
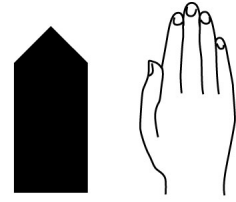
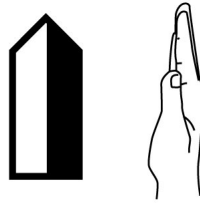
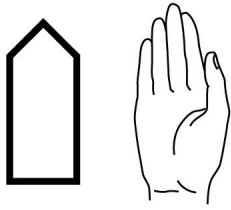


doctor



Front View

Hands parallel with the Front Wall.



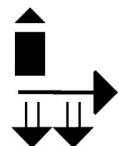
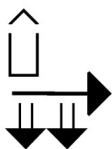
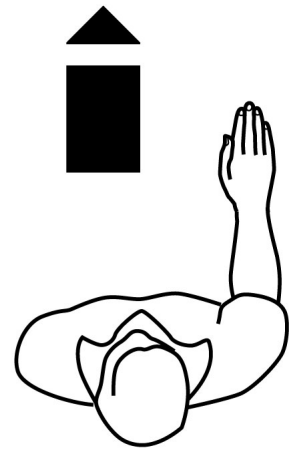
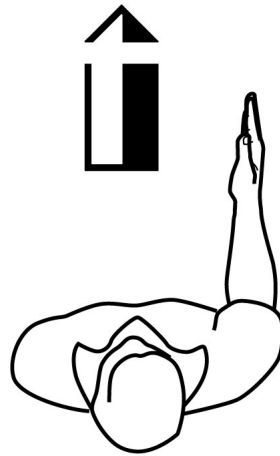
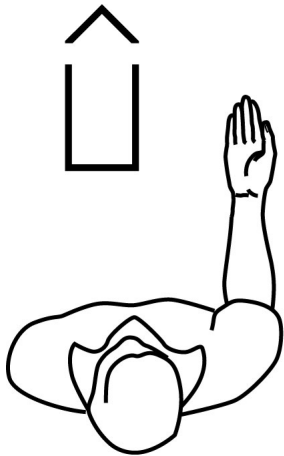
window

house

his, hers

Top View

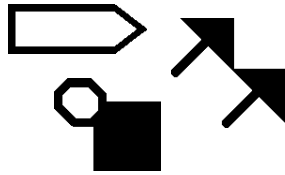
Hands parallel with the Floor.



things

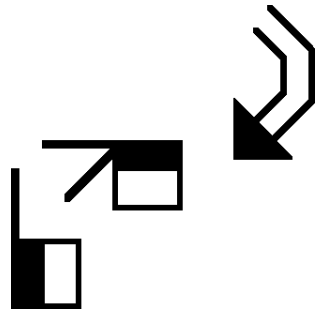
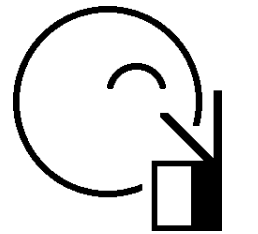
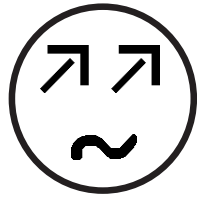
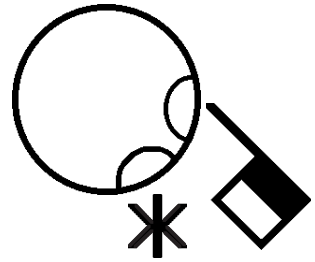
way, street

children



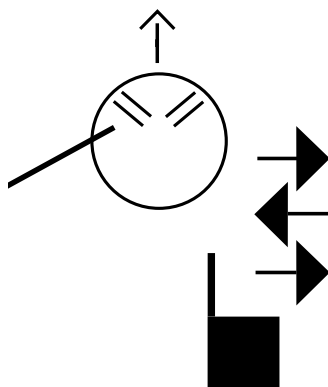
Pause,
Comma

Period,
End of
Sentence



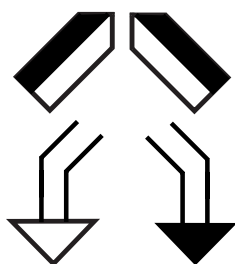
English Translation: Writing ASL from the Deaf perspective.

Eyebrows
Down



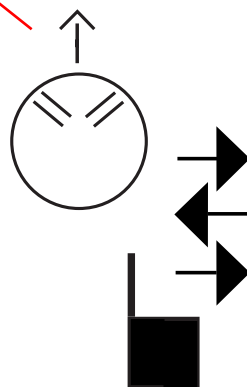
Where

Head
Forward



house

Question
Mark,
Slight Pause
at End of
Sentence

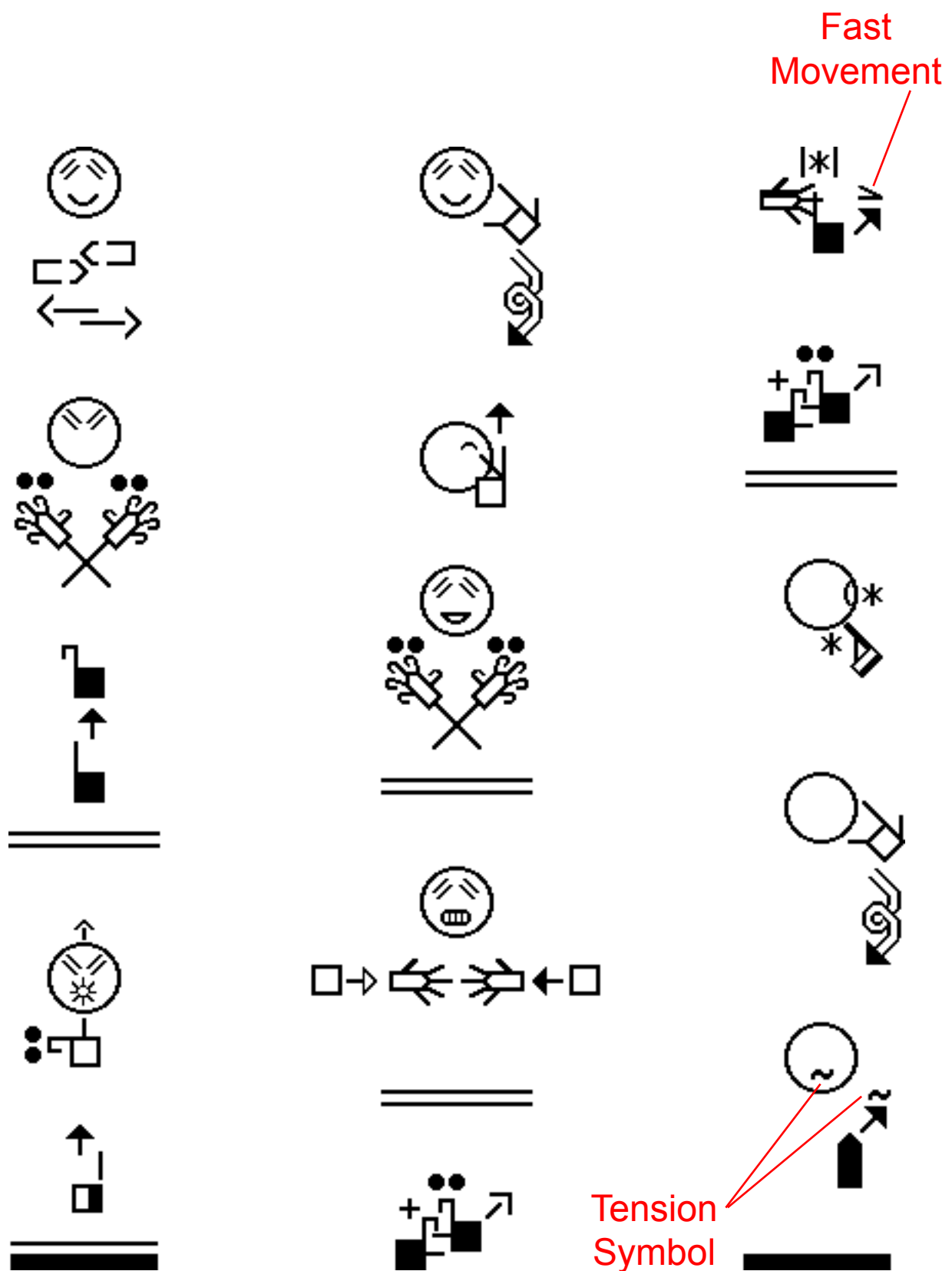


where



?

English Translation: Where is the house?



English Translation: Baby Bear asks "Who are you?"
 Goldilocks saw the bears, became frightened,
 shot out of the house, and ran all the way home.



SignWriting Instruction

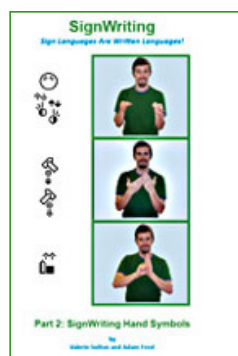
SignWriting.org/lessons • SignWriting.org/shop



1 SignWriting Reference Manual

Manual 1: SignWriting Basics

Learn the basics of SignWriting with this slender, 42 page, spiral-bound manual. An introduction to reading and writing any sign language, it gives a summary of hand symbols, contact symbols, finger movements, arm movements, facial expressions, and reading of sign language literature. All examples are in American Sign Language (ASL). Free for download on the web, and only \$10.00 in the SignWriting Shop. ISBN: 978-0-914336-49-5



2 SignWriting Reference Manual

Manual 2: SignWriting Hand Symbols

This 300-page spiral-bound reference manual devotes a full page to each of the 261 hand symbols of the International SignWriting Alphabet (ISWA 2010), used to write over 40 sign languages on the web in SignPuddle Online. Each page shows one handshape with 6 photos showing 6 different palm facings. The corresponding SignWriting symbol is placed next to each photo. Additional SignWriting instruction is included in the front and the back of the book. ISBN: 978-0-914336-86-0



3 SignWriting Lessons on the Web

Web lessons show moving handshapes with symbols

Adam Frost's photos of his own hands move from one palm facing to another, on 261 web pages, each devoted to one of the 261 hand symbols of the ISWA 2010. This popular site is located in SignWriting Lessons Online. Take a visit:

ISWA 2010 Symbol Lessons Online

Animated GIFs by Adam Frost

<http://www.signwriting.org/lessons/iswa/>



The SignWriting Press

Deaf Action Committee For SignWriting (the DAC)

Center for Sutton Movement Writing, Inc. (CSMW), a 501c3

non-profit educational organization • dac@signwriting.org

Box 517 • La Jolla • CA • 92038-0517 • USA • tel 858-456-0098

SignWriting Shop Online: www.signwriting.org/shop

SignWriting on CafePress: www.cafepress.com/signwriting

SignPuddle Online: www.signbank.org/signpuddle