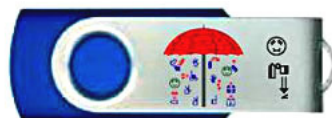


# How to Start the **PocketPuddle™**



# How to Start the **PersonalPuddle™**



# PersonalPuddle™ & PocketPuddle™

## Installation Manual for The PocketPuddle & The PersonalPuddle for Windows & Mac

**PersonalPuddle Software:**  
**ISBN: 978-0-914336-69-3**

**PocketPuddle Software:**  
**ISBN: 978-0-914336-66-2**

Copyright © 2004-2009  
Center for Sutton Movement Writing, Inc.  
All Rights Reserved

SignPuddle Software by  
Stephen E. Slevinski, Jr



SignPuddle Software is free to use under  
the GPL3 License.

International SignWriting Alphabet (ISWA)  
by Valerie Sutton



SignWriting symbols are free to use under  
the SIL Open Font License (OFL)



Published by  
**The SignWriting Press**  
<http://www.SignWriting.org/shop>

**SignPuddle Software Online**  
<http://www.signbank.org/signpuddle>

**SignWriting Image Server**  
<http://www.signbank.org/swis>

**Center for Sutton Movement Writing, Inc.**  
an educational 501c3 non-profit organization  
P.O. Box 517 • La Jolla • CA • 92038-0517 • USA  
[SignWriting.org](http://www.SignWriting.org) • [SignBank.org](http://www.SignBank.org) • [SignPuddle.org](http://www.SignPuddle.org)  
Email: [sutton@signwriting.org](mailto:sutton@signwriting.org) • Tel 858-456-0098

## Technical Support



## Free Technical Support

### SignPuddle Online

[www.SignBank.org/signpuddle/help](http://www.SignBank.org/signpuddle/help)

Deaf Action Committee for SignWriting  
Center For Sutton Movement Writing  
an educational, nonprofit organization  
Box 517, La Jolla, CA, 92038-0517, USA  
tele 858-456-0098.....[sutton@signwriting.org](mailto:sutton@signwriting.org)

### Your Dream

Is your dream to search, print or publish SignWriting dictionaries and literature? The world is at your fingertips, if you use **SignPuddle Software** to create signs and SignWriting documents!

### The SignWriting List

Join this active list of SignWriting users to post your questions to the group. Valerie Sutton and other teachers will answer technical questions on the SW List. A great way to receive and share information!

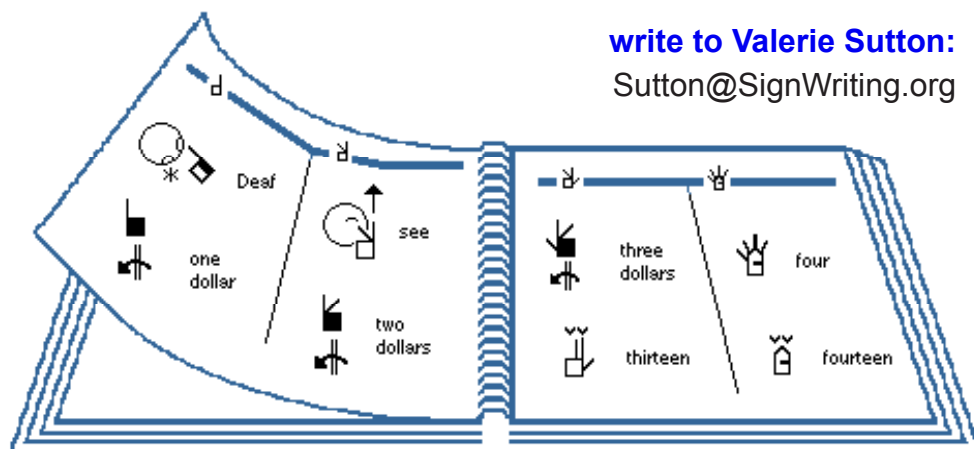
### To join the SignWriting List, go to:

<http://www.SignWriting.org/forums/swlist>

or...

### write to Valerie Sutton:

[Sutton@SignWriting.org](mailto:Sutton@SignWriting.org)



# Table of Contents

## **Section 1: PocketPuddle for Windows .....5**

### **1. HOW TO START THE POCKETPUDDLE .....6**

Put the PocketPuddle USB Flash Drive in the USB port and...

### **2. HOW TO STOP THE POCKETPUDDLE ..... 10**

How do close and stop the server...

### **3. HOW TO EJECT THE POCKETPUDDLE ..... 11**

Before you take the PocketPuddle out of the USB port...

### **4. TROUBLESHOOTING...IS SKYPE INSTALLED? ..... 11**

Do you use Skype? If so, you will need to do the following...

## **Section 2: PersonalPuddle for Windows.....17**

### **1. HOW TO START THE PERSONALPUDDLE ..... 18**

Insert the CD or download from the web. For all Windows computers...

### **2. IMPORTING PUDDLES FROM SIGNPUDDLE ONLINE ..... 22**

Installing files from the web into your PersonalPuddle...

### **3. IMPORTING USER INTERFACES IN DIFFERENT LANGUAGES..... 29**

Work and navigate on screen in English, French, German etc...

### **4. IMPORTING NEW FILES AND RENAMING THEM ..... 33**

Installing files from SignPuddle Online and then renaming them...

## **Section 3: PersonalPuddle for Macintosh.....39**

### **1. HOW TO START THE PERSONALPUDDLE ..... 40**

Insert the CD or download from the web. For Mac OS X 10.4 or later...

### **2. IMPORTING PUDDLES FROM SIGNPUDDLE ONLINE ..... 44**

Installing files from the web into your PersonalPuddle...

### **3. IMPORTING USER INTERFACES IN DIFFERENT LANGUAGES..... 50**

Work and navigate on screen in English, French, German etc...

### **4. IMPORTING NEW FILES AND RENAMING THEM ..... 54**

Installing files from SignPuddle Online and then renaming them...



**Write Sign Language  
Dictionaries & Literature  
on a portable web server  
that fits in your pocket! For  
the avid SignWriting® user.**

---



---

**The PocketPuddle™**  
A SignPuddle™ Server on a USB Stick!

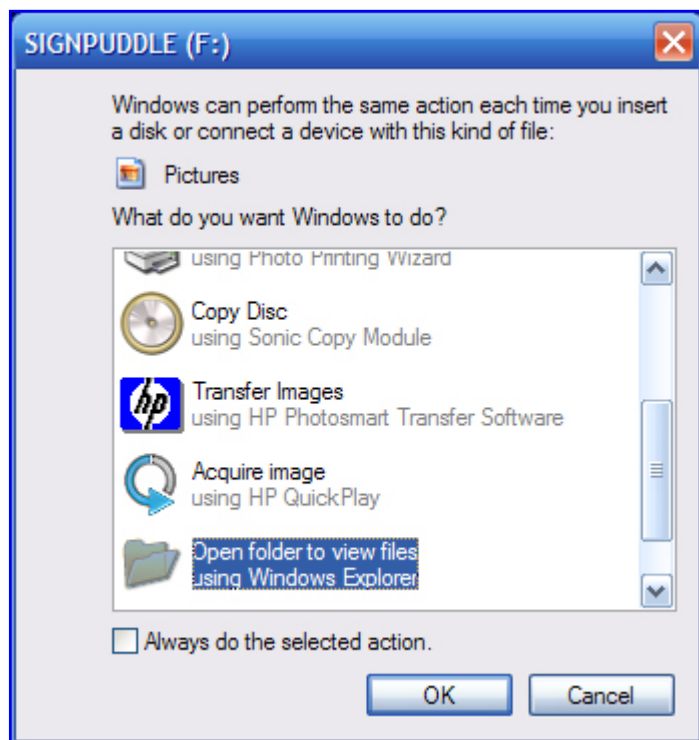
**Carry Your Sign Language Data in Your Pocket!**

For All Windows Computers. Works with Mac OS X & Linux with special install.

# Welcome to the PocketPuddle!!

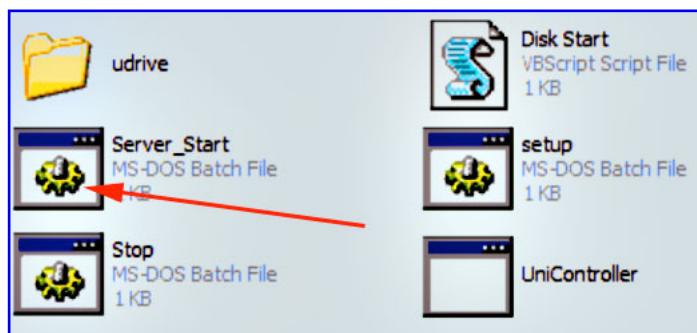
## How to Start The PocketPuddle:

1. The PocketPuddle works best in the Firefox web browser. Download the latest version of Firefox at <http://www.mozilla.com>. Make Firefox your primary browser.
2. Is Skype on your computer? If so, read instructions at the end of this document.
3. Insert the PocketPuddle in the USB port of your Windows computer.
4. Wait for this Window to appear:



5. Click on: "Open folder to view files using Windows Explorer."
6. Click OK.

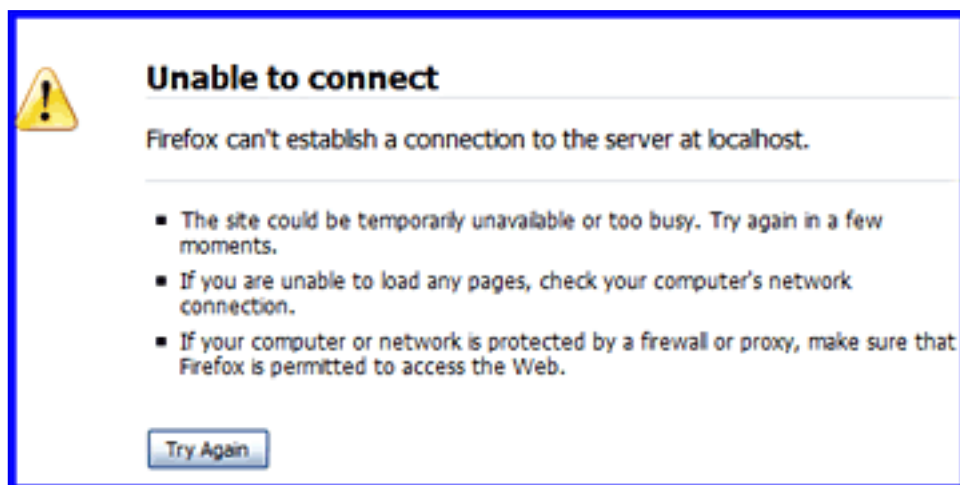
7. The PocketPuddle Start Window will open.



8. Click on the Server\_Start Button (see above).

9. The Uniform Server will open the PocketPuddle in Firefox.

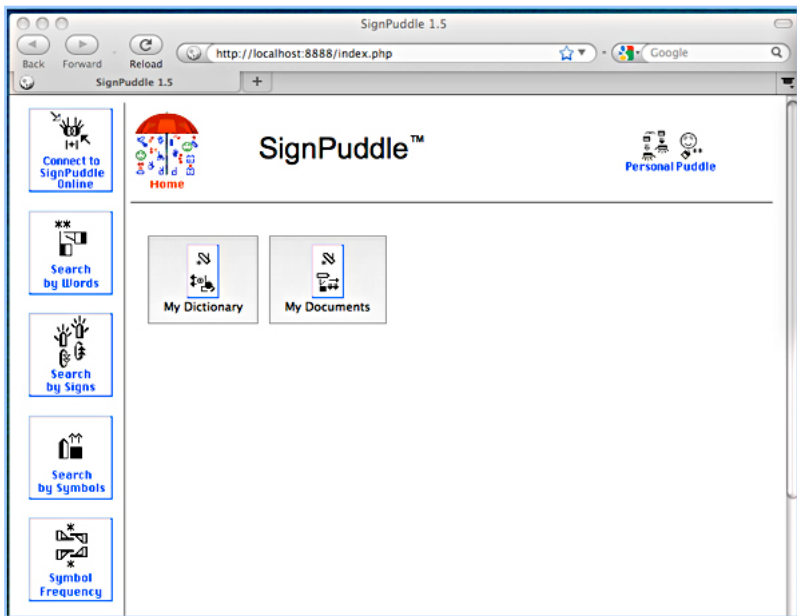
10. If you get a window like this, do not worry. Just click on the Try Again button:



11. The PocketPuddle should open!

12. If it does not open, see Troubleshooting p 11.

13. The PocketPuddle opens. SignPuddle is designed to work best in Firefox. It is best to set FireFox as your default web browser, so you use Firefox when you work in your PocketPuddle.

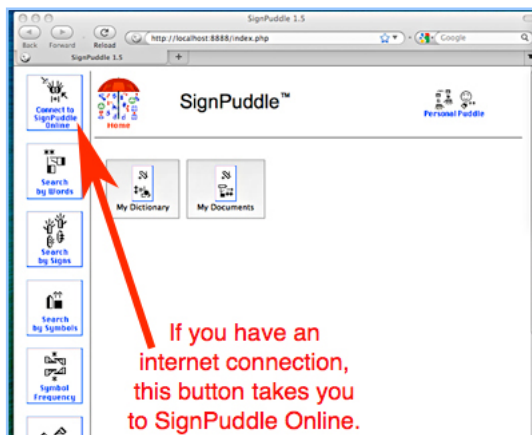


14. Now you can start working in SignPuddle, by clicking on My Dictionary or My Documents. These are empty files, waiting for you to add new entries:

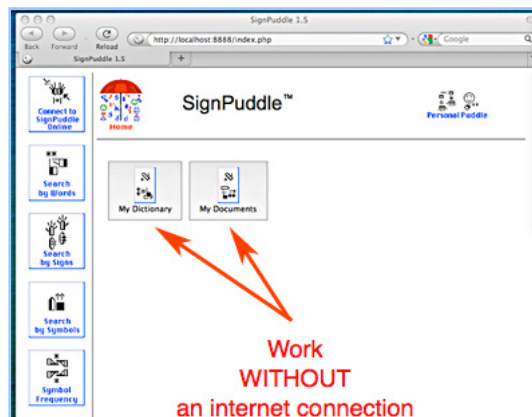




15. If you have an internet connection, you can click on the button **Connect To SignPuddle Online** to visit SignPuddle Online, staying within the same Firefox browser. Use your Back Button at the top of Firefox to return to your PersonalPuddle. You can move back and forth, between the online and desktop versions of SignPuddle:



16. If you do not have an internet connection, work in My Dictionary and My Documents, adding your own signs and documents, without visiting the internet. They are private files that do not need an internet connection.



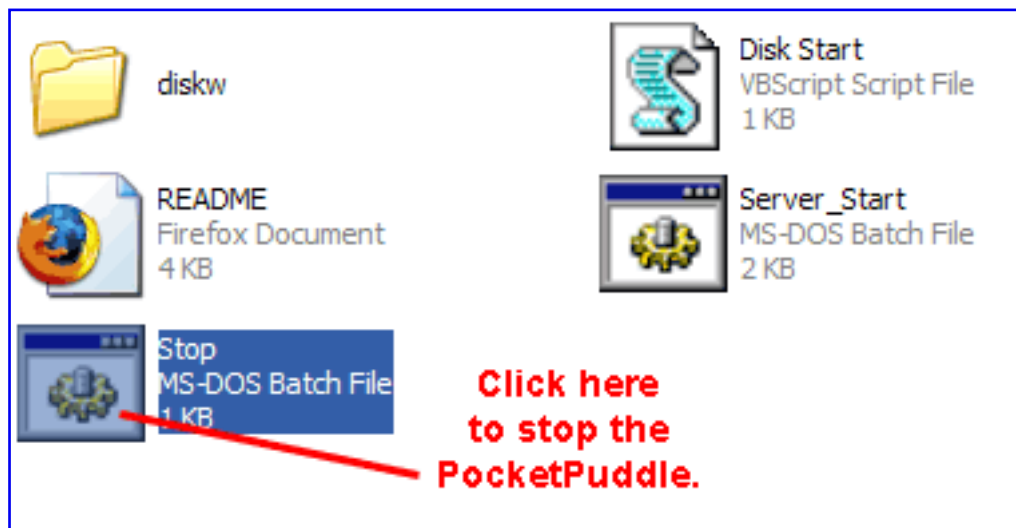
17. If you have an internet connection, you can import SignPuddle files from SignPuddle Online. For example, you can place the ASL Dictionary file from the web, into your PersonalPuddle, so you can work with it privately, without an internet connection. See page 22 in this manual for instructions on how to IMPORT a SignPuddle file from the web.

## How to Close or Stop The PocketPuddle:

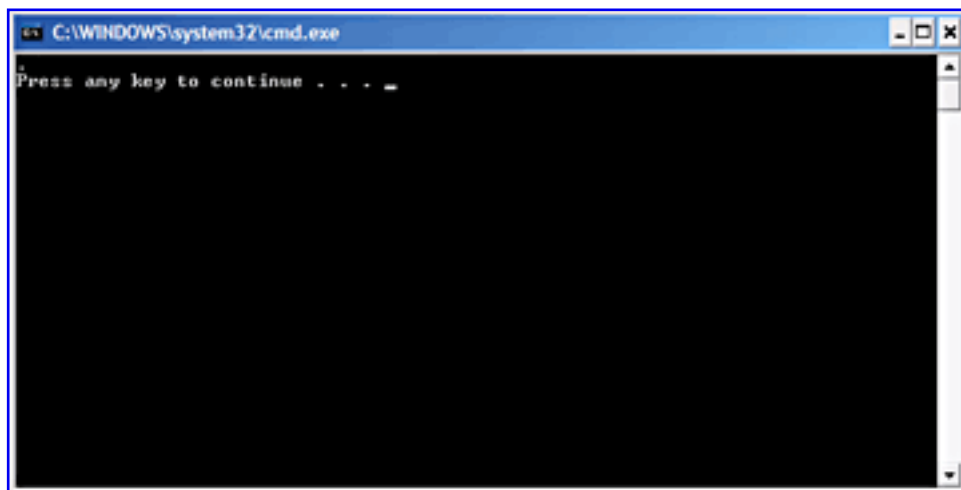
There are three steps to closing the PocketPuddle.

**Step 1:** First, close the Firefox web browser.

**Step 2:** Second, click on the Stop Button to stop the server.



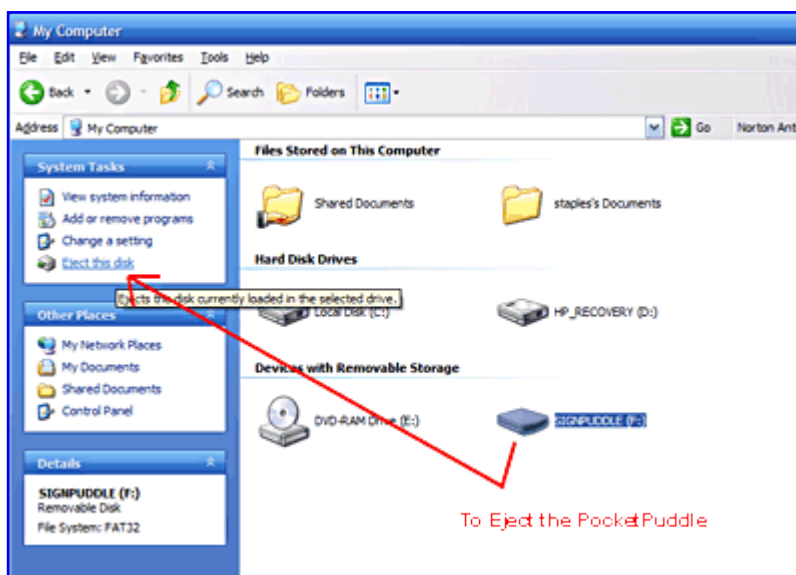
**Step 3:** Third, the Stop program will ask you to type "any" key. Do that:



**Step 4:** Your PocketPuddle is now closed.

## How to Eject The PocketPuddle:

1. Go to My Computer.
2. Click on the SIGNPUDDLE F drive.
3. Click on Eject This Disk.
4. Take the PocketPuddle out of the computer.



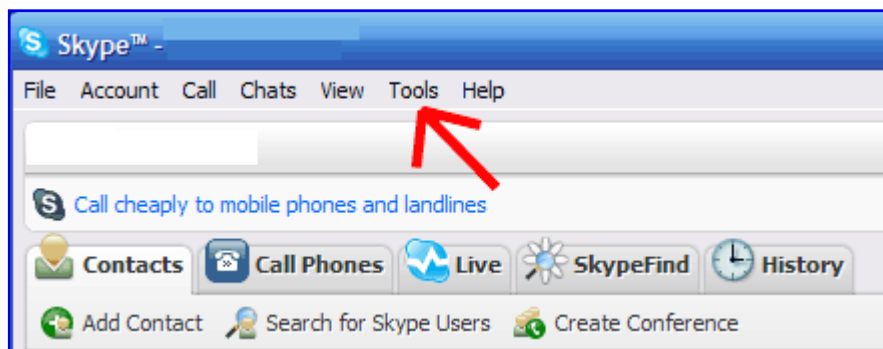
## TroubleShooting

### Is Skype Installed On Your Computer?

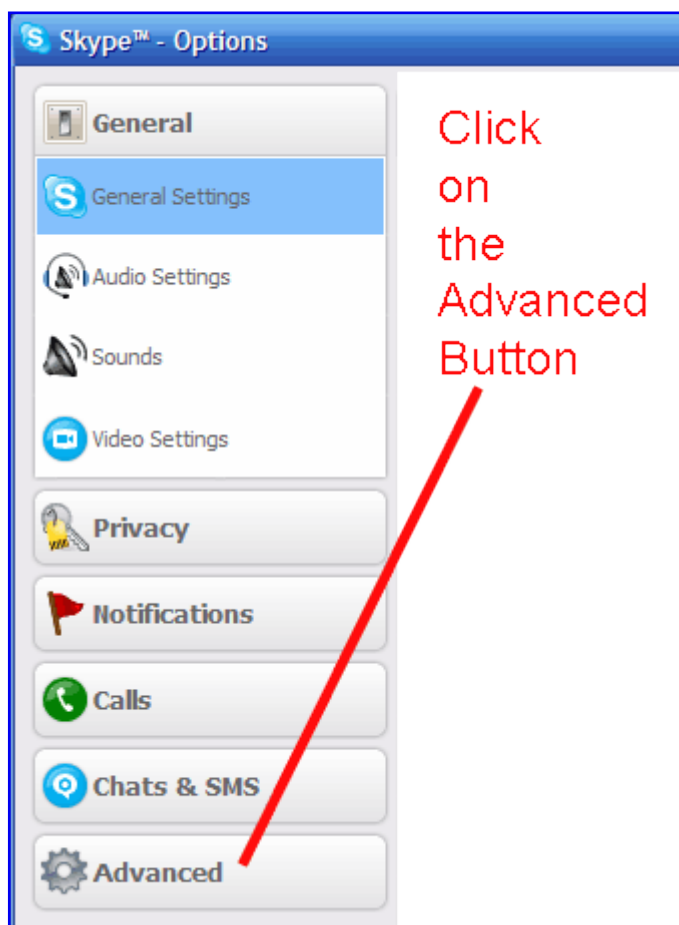
Skype can create a port-conflict with the PocketPuddle, but it is easily solved!

If you want to use both Skype and your PocketPuddle, here is what to do:

1. Skype and the PocketPuddle are competing for the same port...port 80.
2. To fix this, go to the Tools menu in Skype and click on "Options..."



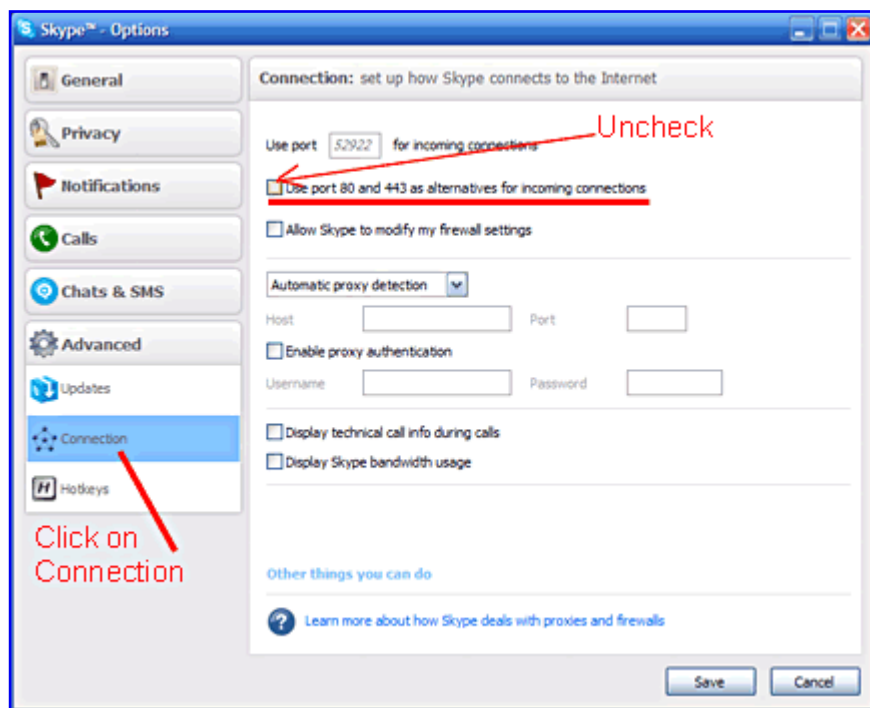
3. In Options, click on the "Advanced Button".



4. Click on the "Connection" tab on the side of the dialogue box under Advanced.

5. You will see a checked box that says "Use port 80 and 443 as alternatives for incoming connections."

6. Uncheck this box, and the problem is solved:



## Regarding Port 80...

The PocketPuddle needs port 80 to function. If you have another program or device that uses port 80, it might also need to be changed so the PocketPuddle can run too.

## Questions or Frustrations?

Do not worry. Contact us anytime!

Val ;-)

Valerie Sutton  
[Sutton@SignWriting.org](mailto:Sutton@SignWriting.org)

Steve Slevinski  
[slevin@signpuddle.net](mailto:slevin@signpuddle.net)

SignPuddle  
Online Sign Language Community  
<http://www.SignBank.org/signpuddle>

Other SignPuddle Sites  
<http://www.SignPuddle.org>  
<http://www.SignPuddle.com>  
<http://www.SignPuddle.net>

SignWriting  
Read & Write Sign Languages  
<http://www.SignWriting.org>

SignBank  
Create Sign Language Databases  
<http://www.SignBank.org>

SignWriting List  
Technical Support: Ask questions to the List  
<http://www.SignWriting.org/forums/swlist>

SignWriting Literature Project  
The DAC, Deaf Action Committee  
Center For Sutton Movement Writing  
an educational nonprofit organization  
P.O. Box 517, La Jolla, CA, 92038, USA  
tel 858-456-0098 Skype: valeriesutton

## About The PocketPuddle

Welcome to the PocketPuddle; a portable web server that uses the same code as the SignPuddle web servers. The PocketPuddle is for individual use only and not intended for groups and organizations. Please see SignPuddle.com for more information about groups products like the SignPuddle Workstation and Server.

## Using the PocketPuddle

The easiest way to use the PocketPuddle is to plug the USB stick into any Windows computer. The PocketPuddle will automatically be recognized as an external drive and labelled as the next available drive letter, such as drive E.

## Starting the server

Once the PocketPuddle has been assigned a drive letter, open windows explorer and double click on the "Server\_start.bat" file located in the root directory of the new drive. This will start the portable webserver and automatically open the SignPuddle Home page in the default web browser. As long as the portable webserver is running, you can access it by using the URL Address <http://localhost>.

## Stopping the server

After you are done with the PocketPuddle, you need to stop the webserver. Open windows explorer and double click on the "Stop.bat" file located in the root directory of the new drive. This will stop the portable webserver and localhost will no longer accept requests.

## Removing the PocketPuddle

Before you remove the PocketPuddle USB stick from the computer, you must stop the drive by telling the computer to eject the drive. There are 3 ways to do this.

- \* Open windows explorer and right click on the drive letter and select "Eject" from the context window.

- \* Open windows explorer, click once on the drive letter, and use menu option File >> SIGNPUDDLE (E:) >> Eject.

- \* In the system tray (lower right), click on the USB symbol to safely remove hardware and then click on the message to "Safely remove USB Mass Storage Device - Drive (E:)"

After you get the message "Safe to remove hardware" you can pull the USB stick from the computer.

### **Firefox**

The PocketPuddle works best with Firefox. There is a noticeable speed difference with other browsers.

### **Conditional Lifetime Code Updates**

The PocketPuddle is made available at a significant discount compared to the other SignPuddle products and is intended for single users. The PocketPuddle involves a one time fee and include conditional lifetime code updates free of charge.

Please do not post the code online or share the code with other people. Each PocketPuddle has a unique SignPuddle ID that is used for updates. If a SignPuddle ID is used for piracy, it will be removed from the authorized automated code updates list.

You can check for code updates using the URL Address localhost/update. If code updates are available, they will automatically be downloaded and installed.

### **Backup and recovery**

Since the PocketPuddle uses portable technology, it is possible to copy and paste the entire directory structure. You can create a zip file backup of the drive, and restore the drive by unzipping the backup file.

It is permissible to move the PocketPuddle code to the hard drive of PC for improved speed performance. It is also permissible to have multiple copies of the PocketPuddle code on multiple machines as long as they are intended for use by a single user.

Steve Slevinski  
slevin@signpuddle.net  
Developer, SignPuddle Software



# How to Install the PersonalPuddle for Windows

Write Sign Languages in SignWriting  
Using SignPuddle Without An Internet Connection  
For All Windows Computers



[SignBank.org/signpudde](http://SignBank.org/signpudde) • [SignPuddle.org](http://SignPuddle.org) • [SignWriting.org](http://SignWriting.org)

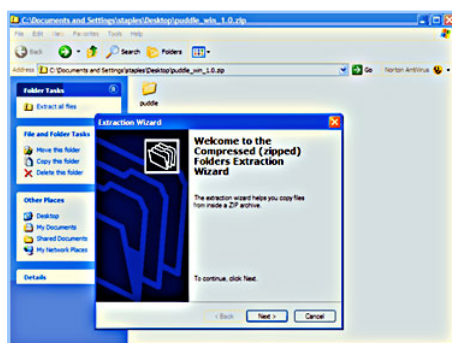
# How to Install the PersonalPuddle for Windows 95 - Windows Vista

## Part 1: How to Begin

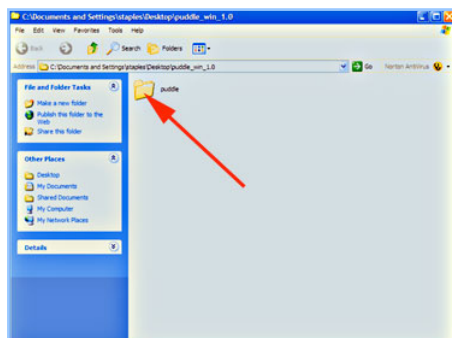
1. Download the PersonalPuddle for Windows, or drag the zipped file from the CD, to your Windows computer desktop. The file is named: puddle\_win\_1.3.zip:



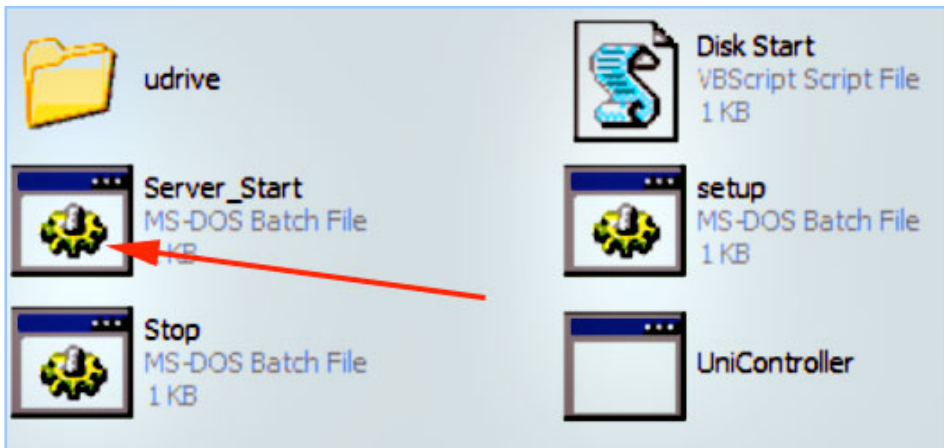
2. Double click on the file, to decompress and extract the folder....



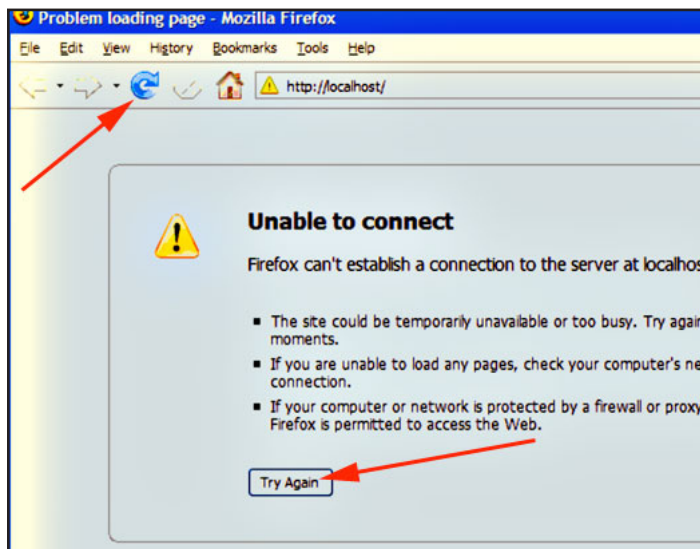
3. The unzipped folder is named: puddle. Open the puddle folder:



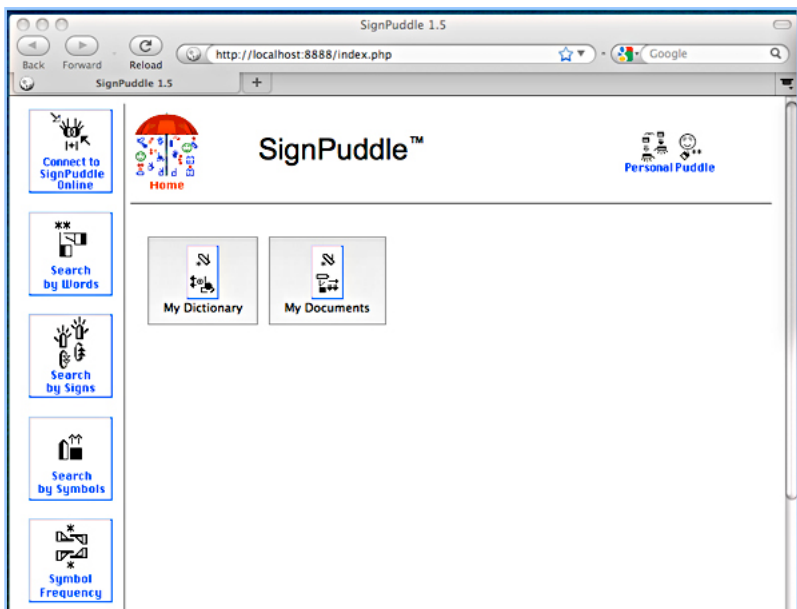
4. Inside the puddle folder, open the file named Server\_Start:



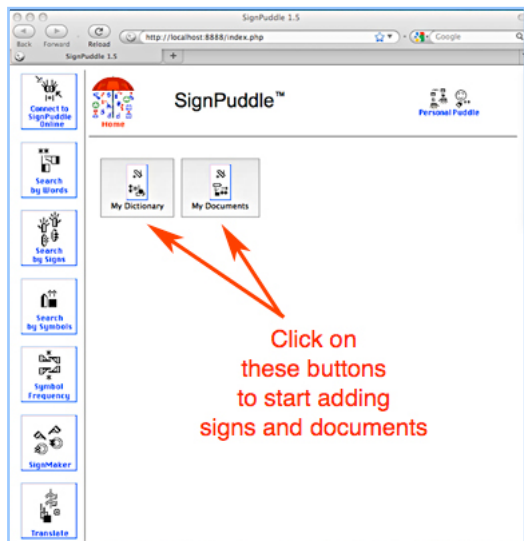
5. The Universal Server will start to open in your web browser... Sometimes it doesn't start the first time. A screen comes up and says Unable to Connect. Click on the Try Again button, or click on the Reload Browser button at the top of the page.



6. The PersonalPuddle opens inside your web browser. SignPuddle is designed to work best in Firefox. It is best to set FireFox as your default web browser, so you use Firefox when you work in your PersonalPuddle.



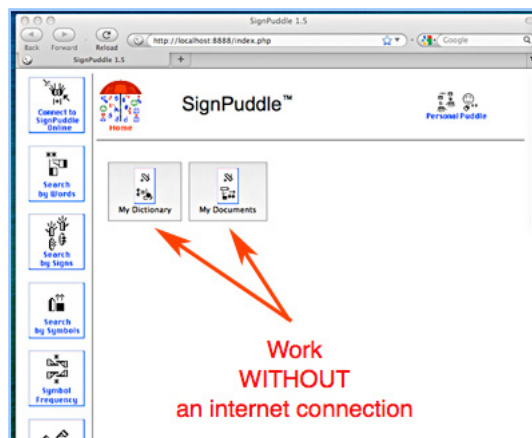
7. Now you can start working in SignPuddle, by clicking on My Dictionary or My Documents. These are empty files, waiting for you to add new entries:



8. If you have an internet connection, you can click on the button **Connect To SignPuddle Online** to visit SignPuddle Online. You can use the Back Button at the top of Firefox to return to your PersonalPuddle. You can move back and forth, between the online and desktop versions of SignPuddle:



9. If you do not have an internet connection, you can continue to work in My Dictionary and My Documents, adding your own signs and documents, without visiting the internet. Those are your own private files, that do not need an internet connection.



10. If you have an internet connection, you can import SignPuddle files from SignPuddle Online. For example, you can import the ASL Dictionary file from the web, into your PersonalPuddle, so you can work with it privately, without an internet connection. See next section for instructions on how to **IMPORT** a SignPuddle file.

## Part 2: Importing Puddles from the Web

1. To import a SignPuddle file, go to SignPuddle Online:

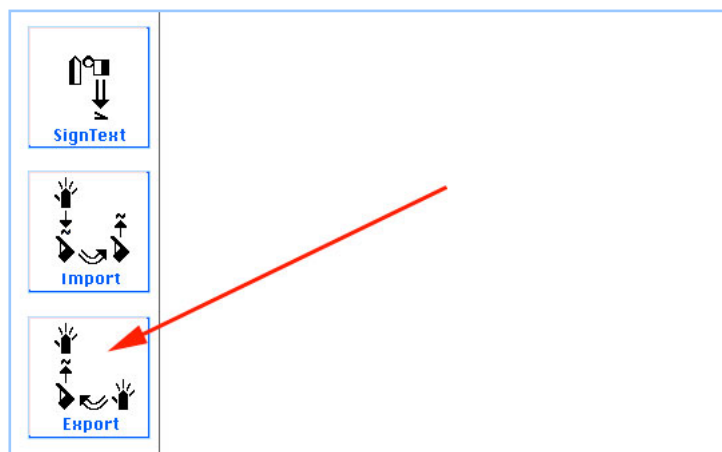
SignPuddle Online  
<http://www.signbank.org/signpuddle>



2. Open the SignPuddle file you wish to import, for example, the ASL Dictionary:

SignPuddle ASL Dictionary  
<http://www.signbank.org/SignPuddle1.5/index.php?ui=1&sgn=4>

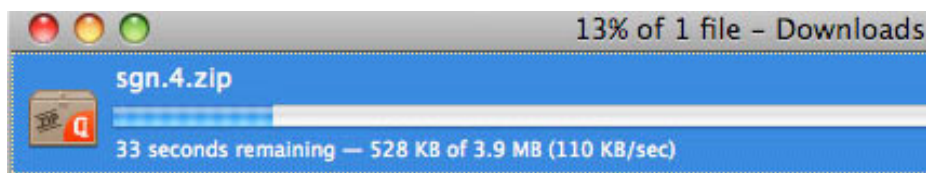
3. Once the ASL Dictionary is open, scroll down. Click on Export:



4. This Export Screen will appear. Click on the Puddle Export, Zip button:

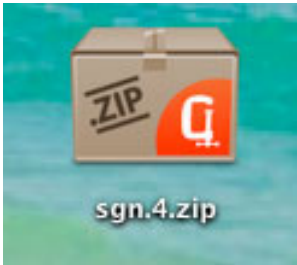


5. It will take some time to download the zip file onto your Desktop:





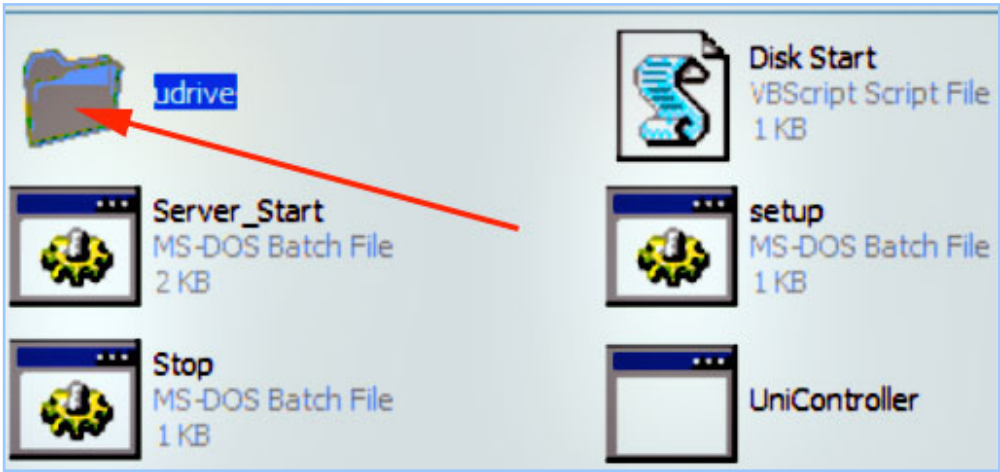
6. The zipped file lands on your desktop:



7. To import, you need to copy the Puddle.zip file you just downloaded, into the import folder. Here is how...

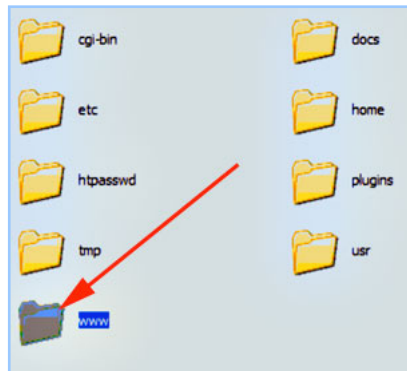
How to  
Copy Puddle.zip files to:  
W:\www\import

a. Open the **udrive** folder.

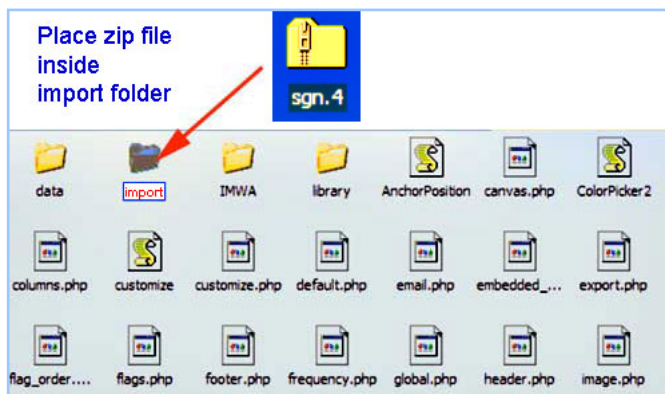




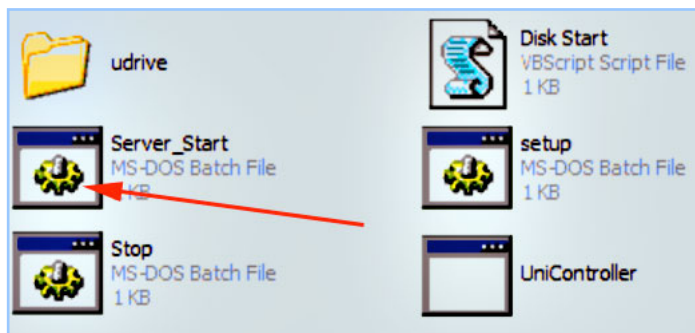
b. Inside the udrive folder, open the www folder:



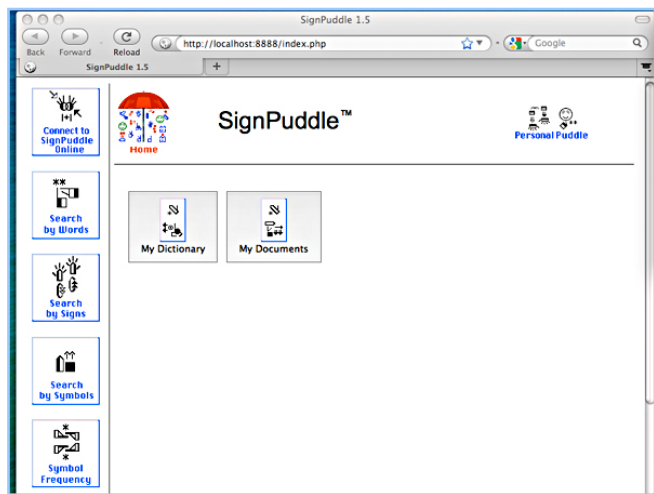
c. Inside the www folder, open the import folder. Place the zip file inside the import folder.



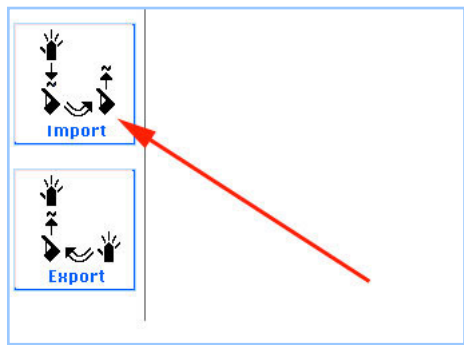
d. Now open the Server\_Start file again.



8. Your PersonalPuddle opens in Firefox:



9. Scroll down. Click on the Import Button:



10. This screen will appear. Click on the Import Button:



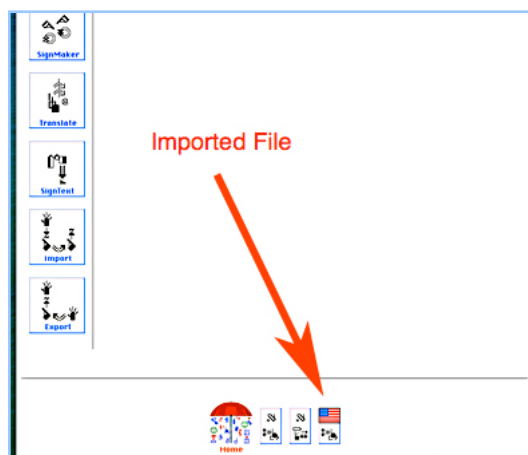
11. After you press the Import Button, your screen will say Success!



12. Click the Red Umbrella. You now have the imported SignPuddle file inside your PersonalPuddle.



13. The icons for your files are also located at the bottom of the screen:



14. Double click on any icon to open the file to start using it immediately.



**15. To learn how to use SignPuddle software, go to:**

SignPuddle Help

<http://www.signbank.org/signpuddle/help/>

SignPuddle Instruction Videos

<http://www.signbank.org/signpuddle/help/SignPuddle15VideoUS/>

Download the SignPuddle Reference Manual  
in English, German, French and Arabic

<http://www.SignBank.org/signpuddle/help/index.html#Manual>

Join the SignWriting List for Technical Support:

<http://www.signwriting.org/forums/swlist/>

## Part 3: Importing User Interfaces in Different Languages

A User Interface is the language and icons used to help you navigate and use the software. The PersonalPuddle User Interface opens in English and American Sign Language. You can download and install other User Interfaces in other languages, including:

Czech and Czech Sign Language  
French and French-Swiss Sign Language  
German and German Sign Language  
Norwegian and Norwegian Sign Language  
Spanish and Spanish Sign Language  
Blind-User-Interface for French users

### HOW TO IMPORT A USER INTERFACE

1. Here are the links to different User Interfaces. Paste one of these links into the url of your web browser and press Enter or Return:

Norwegian and Norwegian Sign Language User Interface

<http://www.signbank.org/signpuddle1.5/zipit.php?ui=0&sgn=3>

French and French-Swiss Sign Language User Interface

<http://www.signbank.org/signpuddle1.5/zipit.php?ui=0&sgn=4>

Spanish and Spanish Sign Language User Interface

<http://www.signbank.org/signpuddle1.5/zipit.php?ui=0&sgn=5>

Czech and Czech Sign Language User Interface

<http://www.signbank.org/signpuddle1.5/zipit.php?ui=0&sgn=6>

German and German Sign Language User Interface

<http://www.signbank.org/signpuddle1.5/zipit.php?ui=0&sgn=8>

Blind User Interface for French-French-Swiss Sign Language

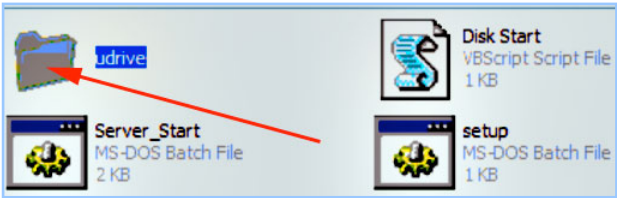
<http://www.signbank.org/signpuddle1.5/zipit.php?ui=0&sgn=10>

2. The user interface you chose will download to your desktop:

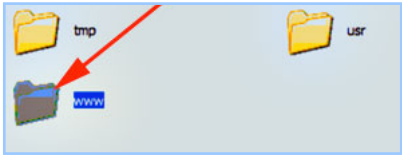


3. To import, you need to copy the Puddle.zip file you just downloaded, into the import folder. Here is how to copy Puddle.zip files to: W:\www\import

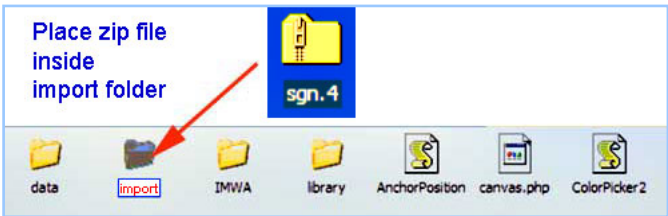
a. Open the udrive folder.



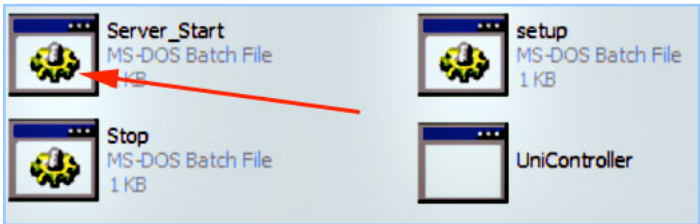
b. Inside the udrive folder, open the www folder:



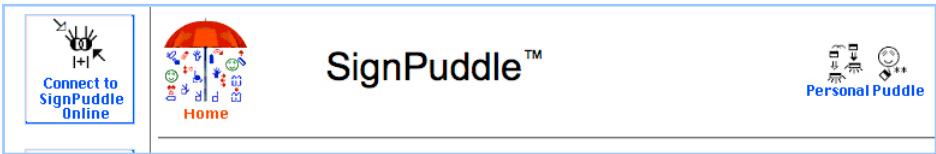
c. Inside the www folder, open the import folder. Place the zip file inside:



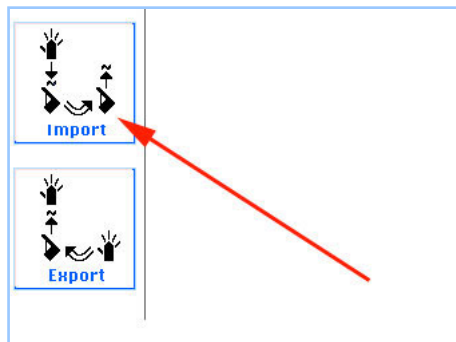
d. Now open the Server\_Start file again.



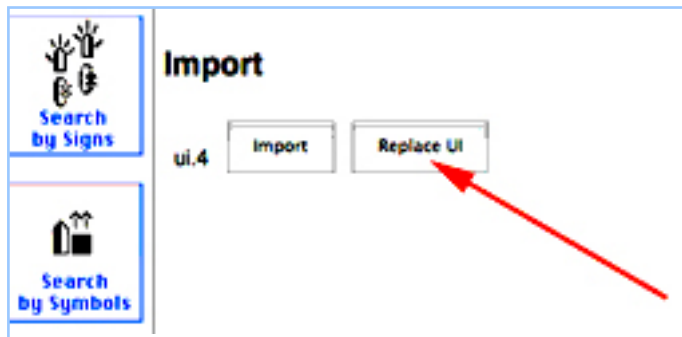
4. Your PersonalPuddle opens:



5. Scroll down. Click on the Import Button:



6. A screen will appear with two buttons: Import and Replace UI

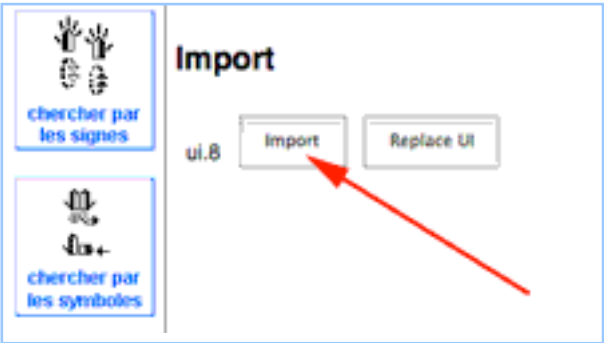


7. To REPLACE the current User Interface, click on the Replace UI button. Your screen will say Success!



8. Click the Red Umbrella. You can now use the new User Interface.

9. To ADD a second User Interface, without replacing the current one, click on the Import Button instead:



10. Your screen will say Success. Then click on the Red Umbrella:



11. This will take you to the User Interface Home Page. Click on the User Interface you wish to use:



12. You can switch back and forth between the two User Interfaces. To switch User Interfaces, click on the Red Umbrella several times to find the User Interface Home Page.

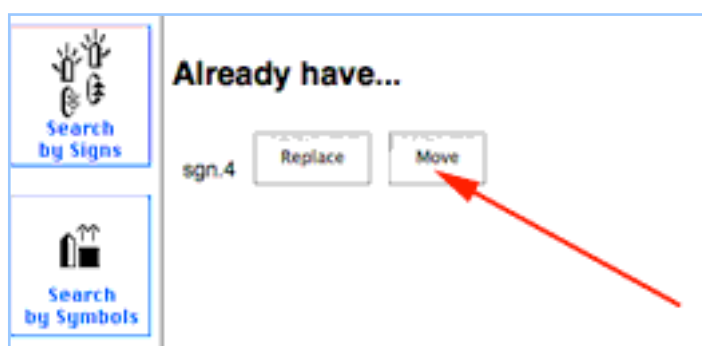


## Part 4: Importing Files With The Same Name

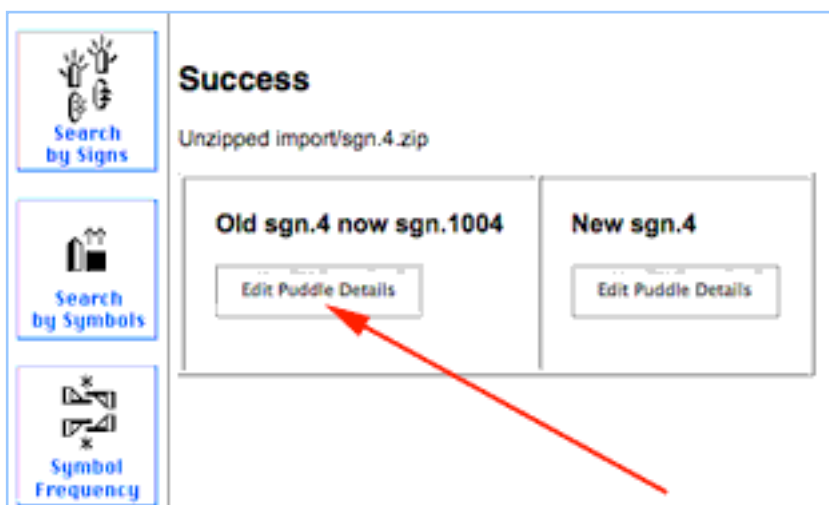
### HOW TO SAVE & RENAME AN OLD FILE

1. When importing SignPuddle files from the web, if the new imported file has the SAME name as an older file on your PersonalPuddle, a screen will appear, providing a choice to REPLACE the old file (the old file will be deleted), or MOVE the old file to another name.

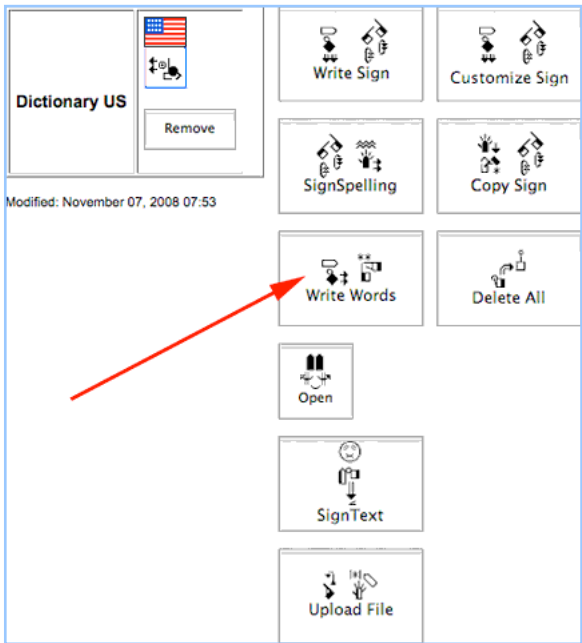
Click on the MOVE button. MOVE means to SAVE the old file and RENAME the old file, so it is NOT deleted:



2. A Success screen will appear, with a choice to rename the OLD file, or rename the NEW file. To rename the OLD file, click on the Edit Puddle Details button in the OLD file box:



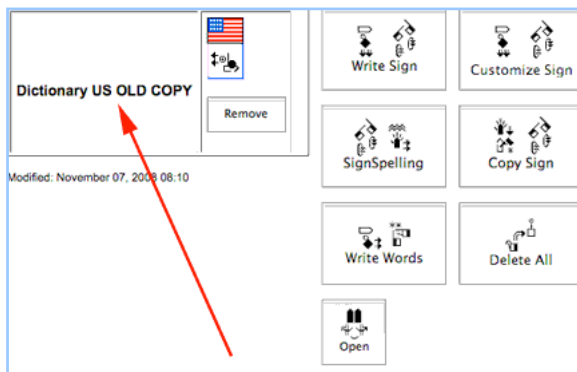
3. This screen will appear. To rename the file, click on the Write Words button:



4. This screen will appear. Type the new name for the file, and press the Update Button:

Terms:	Dictionary US OLD COPY		
Text:			
Source:			
	<div>Update</div>		

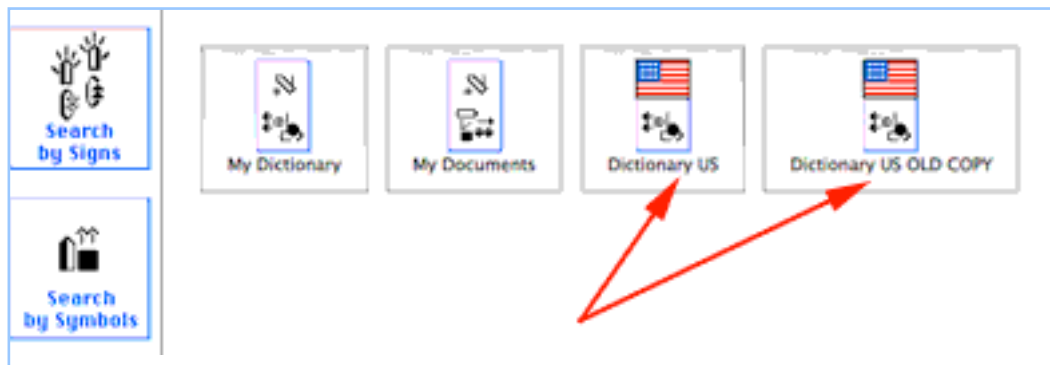
5. This screen will appear. It shows that the file has now been renamed:



6. Click on the Red Umbrella to return to the Home Page:

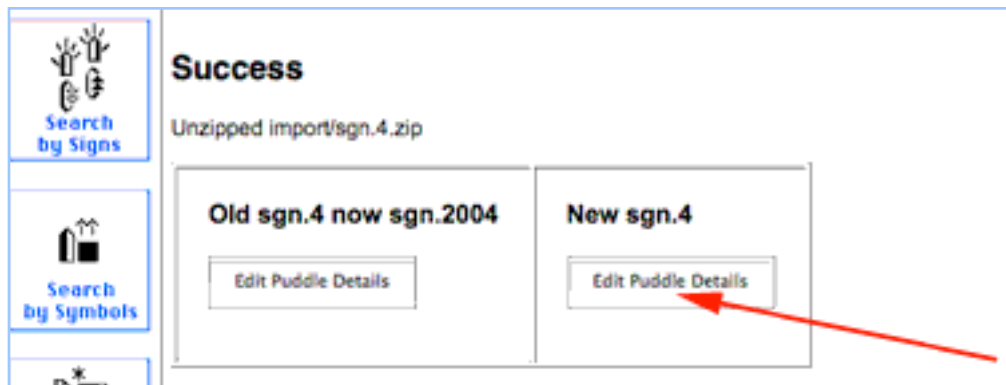


7. The renamed OLD file, and the imported NEW file, now appear on the Home Page. You will be able to work with both files:

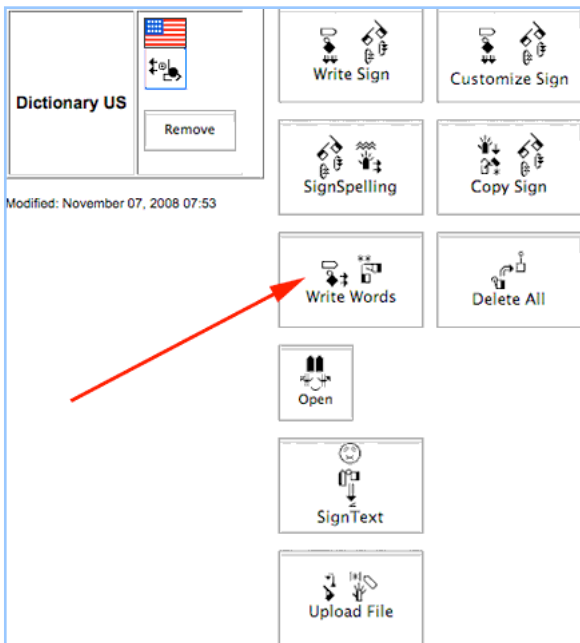


# TO RENAME THE NEW FILE

1. To rename the NEW file, click on the Edit Puddle Details button in the NEW file box:



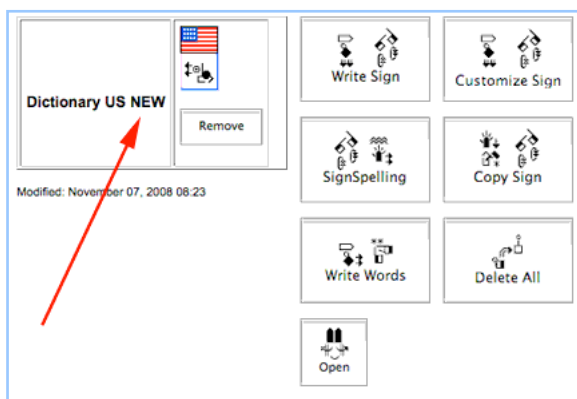
2. This screen will appear. To rename the file, click on the Write Words button:



3. This screen will appear. Type the new name for the file, and press the Update Button:

Terms:	Dictionary US NEW		
Text:			
Source:			
	<input type="button" value="Update"/>		

4. This screen will appear. It shows that the file has now been renamed:



5. Click on the Red Umbrella to return to the Home Page:



6. The renamed NEW file now appears on the Home Page:



7. To learn how to use SignPuddle software, go to:

SignPuddle Help

<http://www.signbank.org/signpuddle/help/>

and watch the Instruction Videos that teach you how to use SignPuddle...

SignPuddle Instruction Videos

<http://www.signbank.org/signpuddle/help/SignPuddle15VideoUS/>

Download the SignPuddle Reference Manual...

SignPuddle Reference Manuals in English, German, French and Arabic

<http://www.SignBank.org/signpuddle/help/index.html#Manual>

Join the SignWriting List for Technical Support:

<http://www.signwriting.org/forums/swlist/>

SignPuddle Products

<http://www.SignBank.org/signpuddle/help/index.html#Information>

For technical support, call or write anytime:

Valerie Sutton

[Sutton@SignWriting.org](mailto:Sutton@SignWriting.org)

858-456-0098

Steve Slevinski

[slevin@signpuddle.net](mailto:slevin@signpuddle.net)

# How to Install the **PersonalPuddle for Mac OS X**

Write Sign Languages in SignWriting  
Using SignPuddle Without An Internet Connection  
For Mac OS 10.4 Tiger or later



[SignBank.org/signpudde](http://SignBank.org/signpudde) • [SignPuddle.org](http://SignPuddle.org) • [SignWriting.org](http://SignWriting.org)

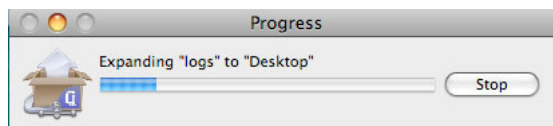
# How to Install the PersonalPuddle for Macintosh OSX 10.4 or later

## Part 1: How to Begin

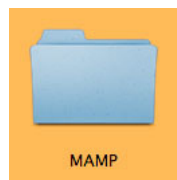
1. Download the PersonalPuddle for the Macintosh, or drag the zipped file from the CD, to your computer desktop. This file should be on your Mac desktop:



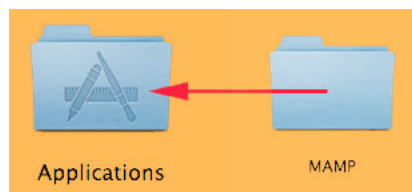
2. Unzip the file by double clicking on it...



3. The unzipped folder is named: MAMP



4. Drag the MAMP folder into the Applications Folder:



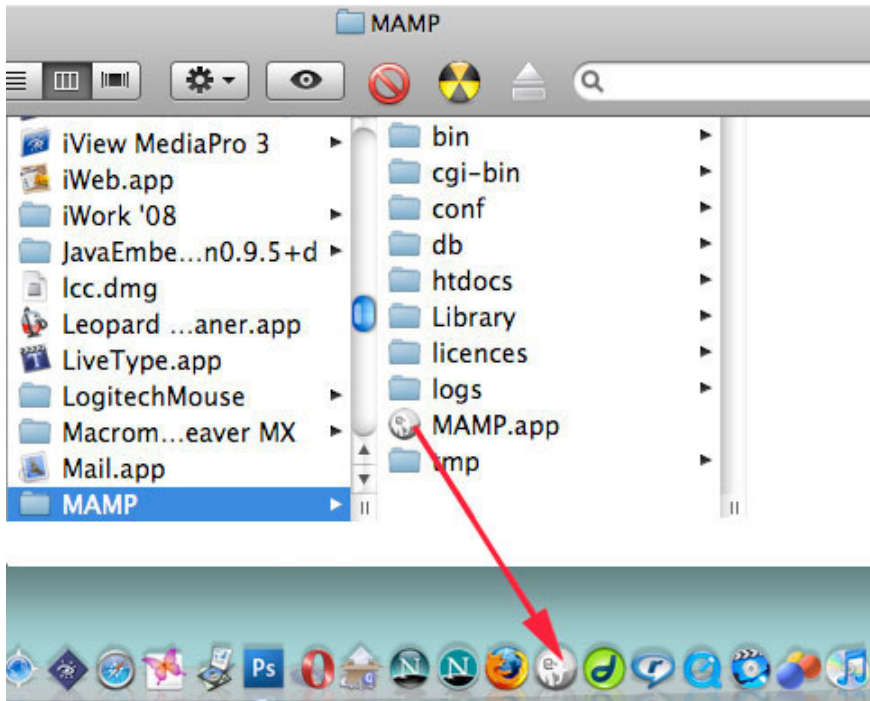


5. Two ways to start the program:

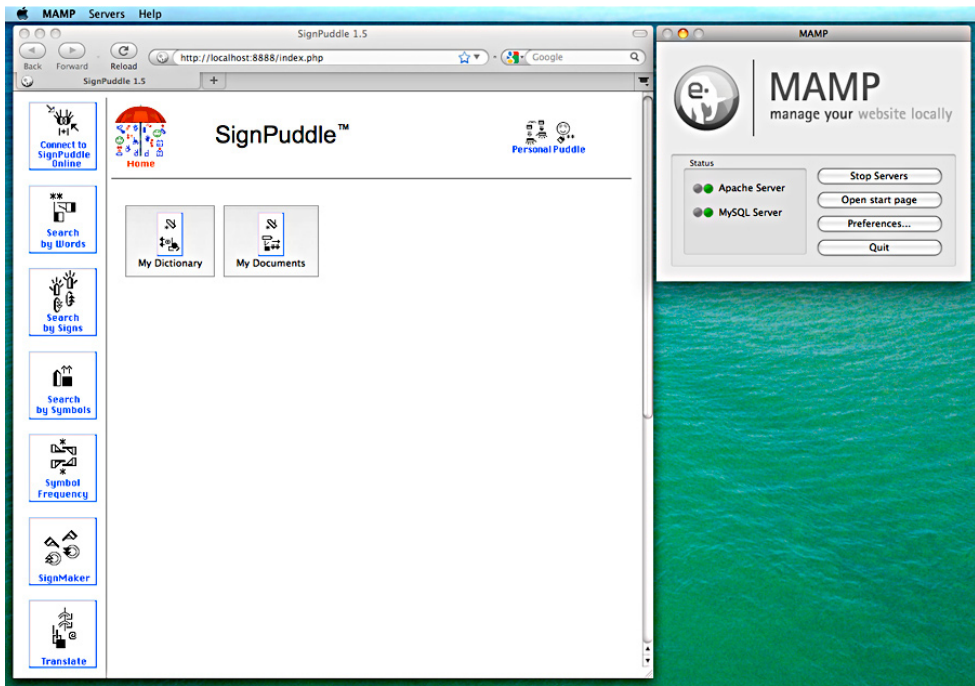
**OPEN METHOD 1:** Open the MAMP folder inside the Applications folder. To start the program, double-click on MAMP.app:



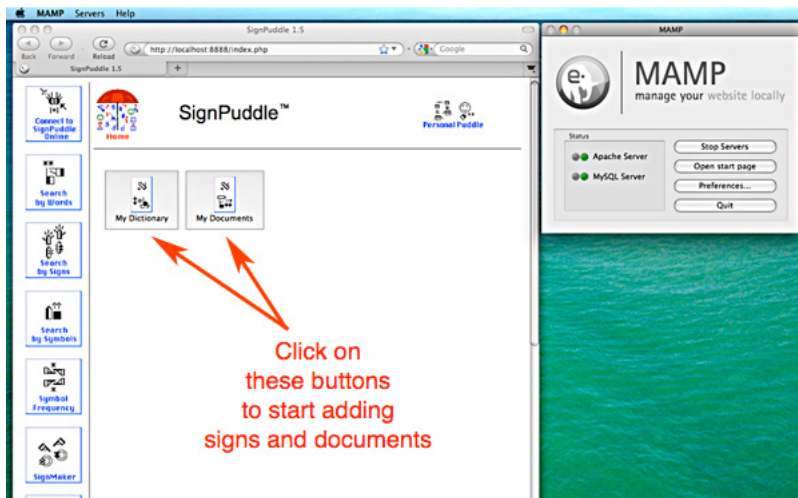
**OPEN METHOD 2:** Open the MAMP folder inside the Applications folder. Drag the MAMP.app file to the Dock. Then click on the icon in the Dock:



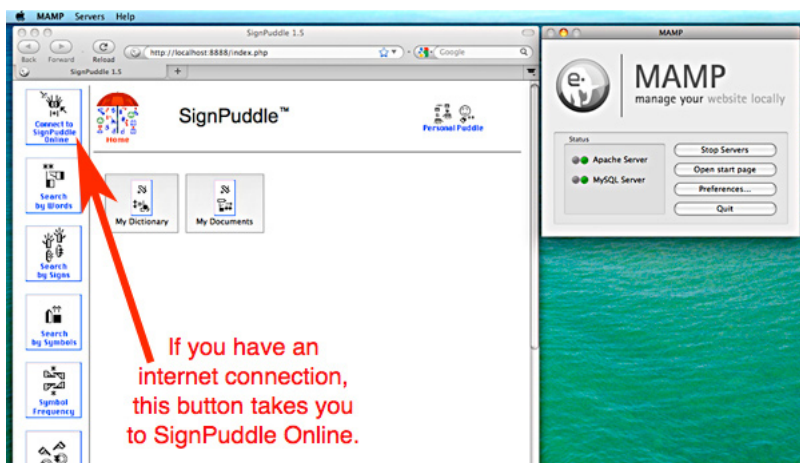
6. The MAMP program opens, and at the same time, it opens the PersonalPuddle inside your web browser. It is best to set FireFox as your default web browser, so you use Firefox when you work in your PersonalPuddle. SignPuddle is designed to work best in Firefox:



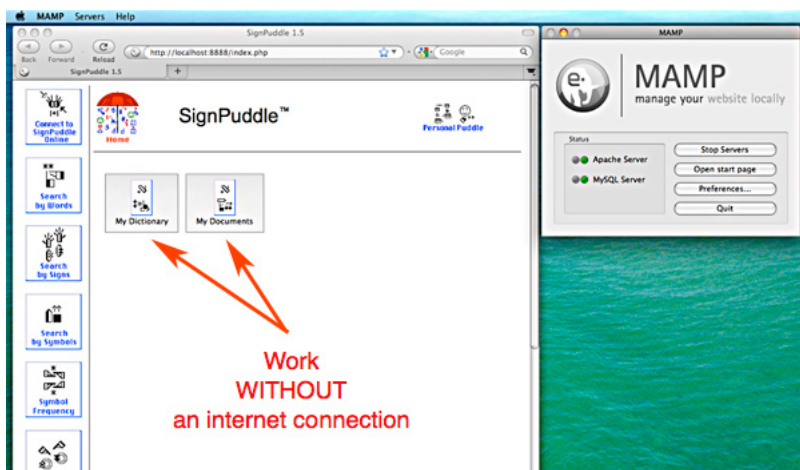
7. Now you can start working in SignPuddle, by clicking on My Dictionary or My Documents. These are empty files, waiting for you to add new entries:



8. If you have an internet connection, you can click on the button **Connect To SignPuddle Online** to visit SignPuddle Online. You can use the Back Button at the top of Firefox to return to your PersonalPuddle. You can move back and forth, between the online and desktop versions of SignPuddle:



9. If you do not have an internet connection, you can continue to work in My Dictionary and My Documents, adding your own signs and documents, without visiting the internet. Those are your own private files, that do not need an internet connection.



10. If you have an internet connection, you can import SignPuddle files from SignPuddle Online. For example, you can import the ASL Dictionary file from the web, into your PersonalPuddle, so you can work with it privately, without an internet connection. See next section for instructions on how to IMPORT a SignPuddle file.

## Part 2: Importing Puddles from the Web

1. To import a SignPuddle file, go to SignPuddle Online:

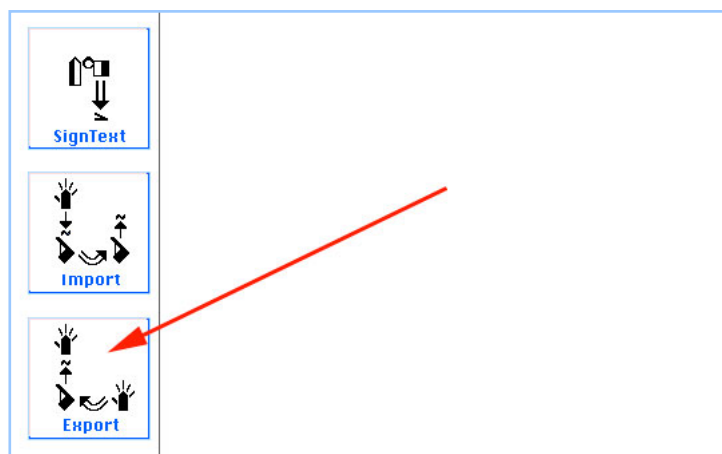
SignPuddle Online  
<http://www.signbank.org/signpuddle>



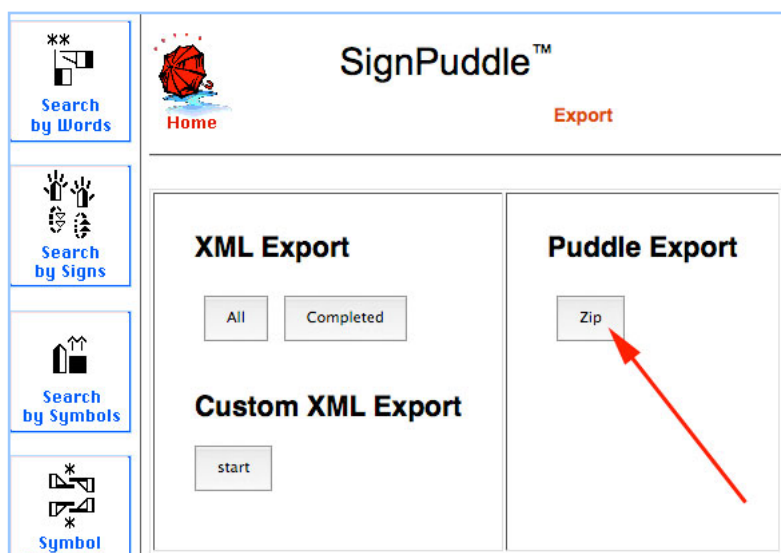
2. Open the SignPuddle file you wish to import, such as the ASL Dictionary:

SignPuddle ASL Dictionary  
<http://www.signbank.org/SignPuddle1.5/index.php?ui=1&sgn=4>

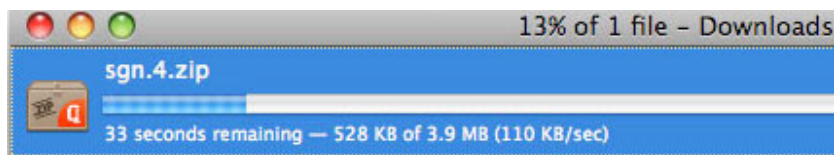
3. Once the ASL Dictionary puddle is open, scroll down. Click on Export:



4. This Export Screen will appear. Click on the Puddle Export, Zip button:

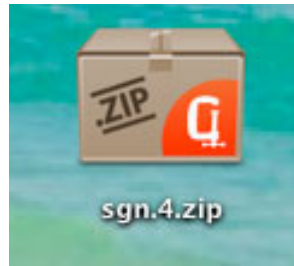


5. It will take some time to download the zip file onto your Desktop:





6. The zipped file lands on your desktop:



7. To import, you need to copy the zipped file you just downloaded, into the MAMP import folder. Here is how...

Open your Applications Folder.

Open the MAMP Folder inside Applications.

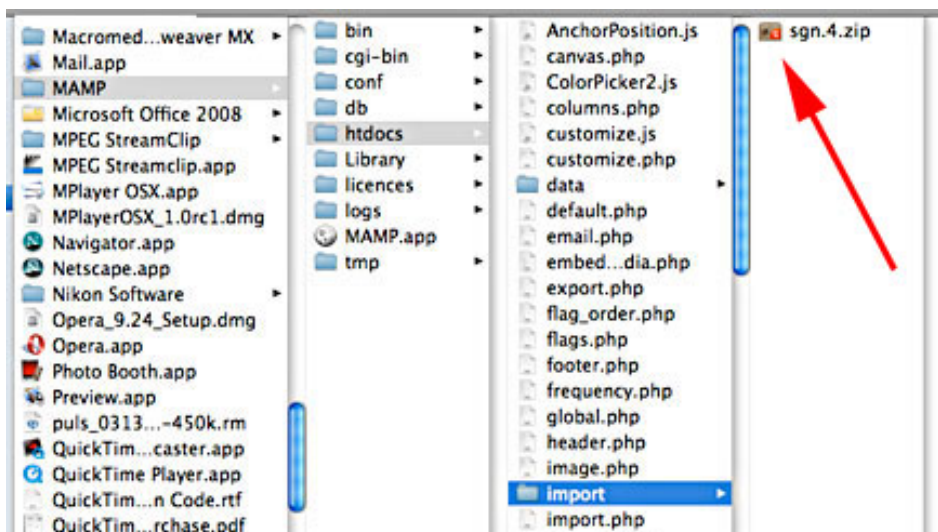
Open the htdocs folder inside MAMP.

Open the import folder inside htdocs.

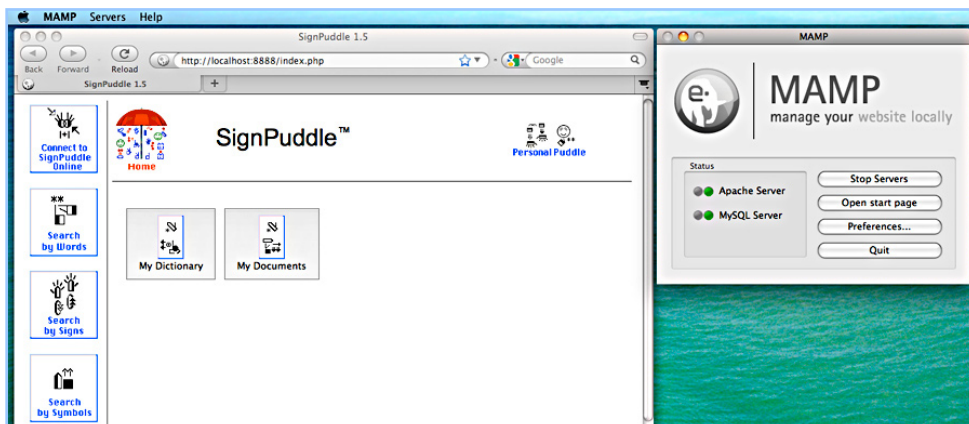
Copy or drag and drop the zipped file into the import folder.

The path is:

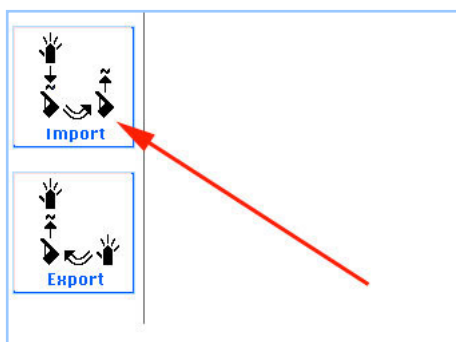
[/Applications/MAMP/htdocs/import](#)



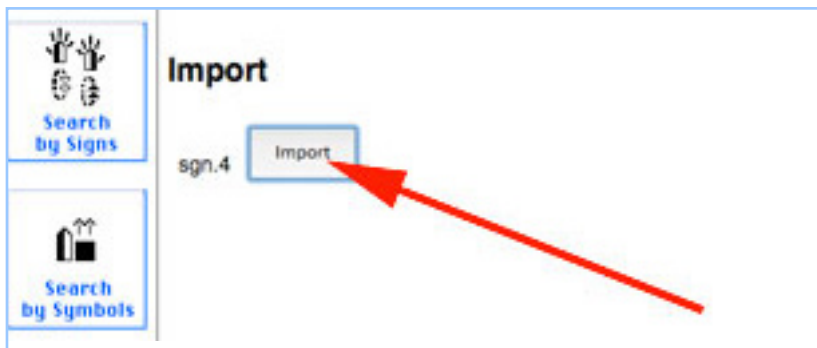
8. Now open the MAMP program from your Dock. Your PersonalPuddle opens in Firefox:



9. Scroll down. Click on the Import Button:



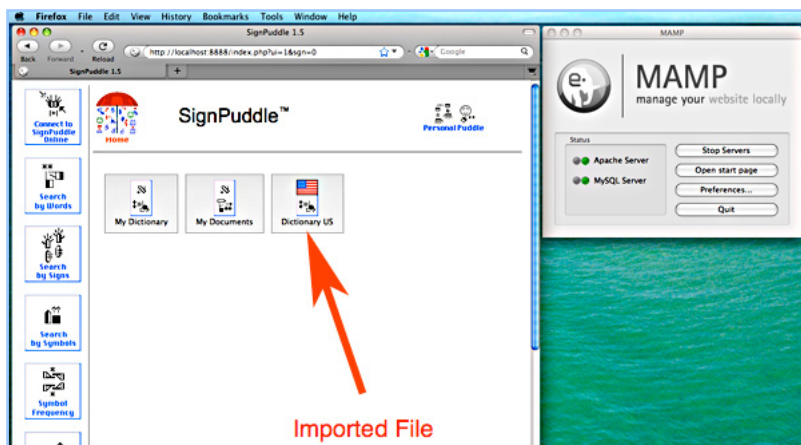
10. This screen will appear. Click on the Import Button:



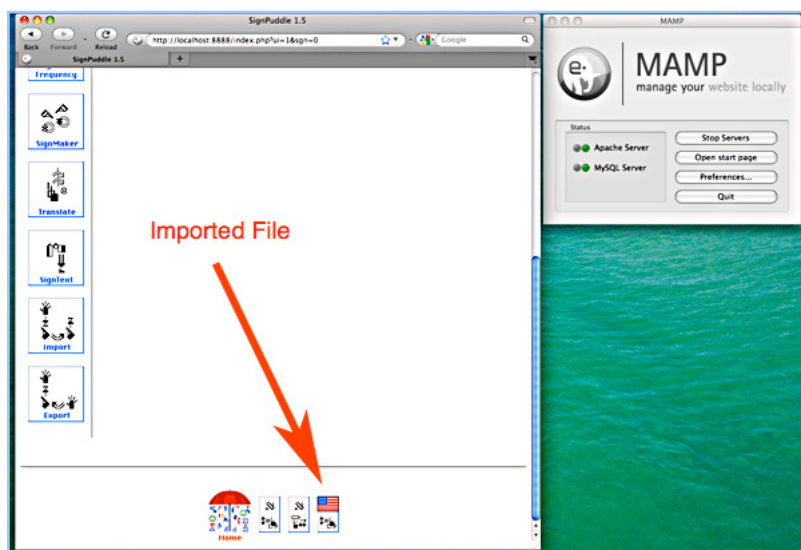
11. After you press the Import Button, your screen will say Success!



12. Click the Red Umbrella. You now have the imported SignPuddle file inside your PersonalPuddle:

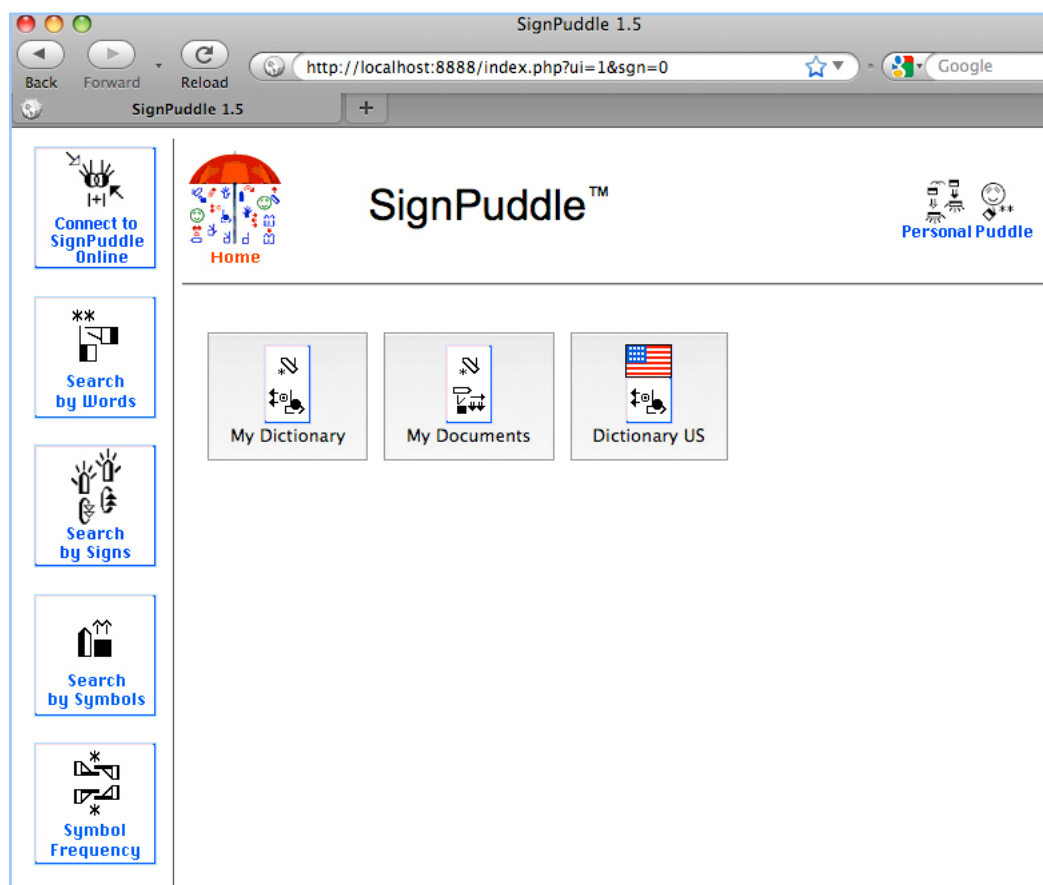


13. The icons for your files are also located at the bottom of the screen:



14. Double click on any icon to open the file to start using it immediately.





**15. To learn how to use SignPuddle software, go to:**

SignPuddle Help

<http://www.signbank.org/signpuddle/help/>

SignPuddle Instruction Videos

<http://www.signbank.org/signpuddle/help/SignPuddle15VideoUS/>

Download the SignPuddle Reference Manual  
in English, German, French and Arabic

<http://www.SignBank.org/signpuddle/help/index.html#Manual>

Join the SignWriting List for Technical Support:

<http://www.signwriting.org/forums/swlist/>

## Part 3: Importing User Interfaces in Different Languages

A User Interface is the language and icons used to help you navigate and use the software. The PersonalPuddle User Interface opens in English and American Sign Language. You can download and install other User Interfaces in other languages, including:

Czech and Czech Sign Language  
French and French-Swiss Sign Language  
German and German Sign Language  
Norwegian and Norwegian Sign Language  
Spanish and Spanish Sign Language  
Blind-User-Interface for French users

### HOW TO IMPORT A USER INTERFACE

1. Here are the links to different User Interfaces. Paste one of these links into the url of your web browser and press Enter or Return:

Norwegian and Norwegian Sign Language User Interface

<http://www.signbank.org/signpuddle1.5/zipit.php?ui=0&sgn=3>

French and French-Swiss Sign Language User Interface

<http://www.signbank.org/signpuddle1.5/zipit.php?ui=0&sgn=4>

Spanish and Spanish Sign Language User Interface

<http://www.signbank.org/signpuddle1.5/zipit.php?ui=0&sgn=5>

Czech and Czech Sign Language User Interface

<http://www.signbank.org/signpuddle1.5/zipit.php?ui=0&sgn=6>

German and German Sign Language User Interface

<http://www.signbank.org/signpuddle1.5/zipit.php?ui=0&sgn=8>

Blind User Interface for French-French-Swiss Sign Language

<http://www.signbank.org/signpuddle1.5/zipit.php?ui=0&sgn=10>

2. The user interface you chose will download to your desktop:



3. To import, you need to copy the zipped file you just downloaded, into the MAMP import folder. Here is how...

Open your Applications Folder.

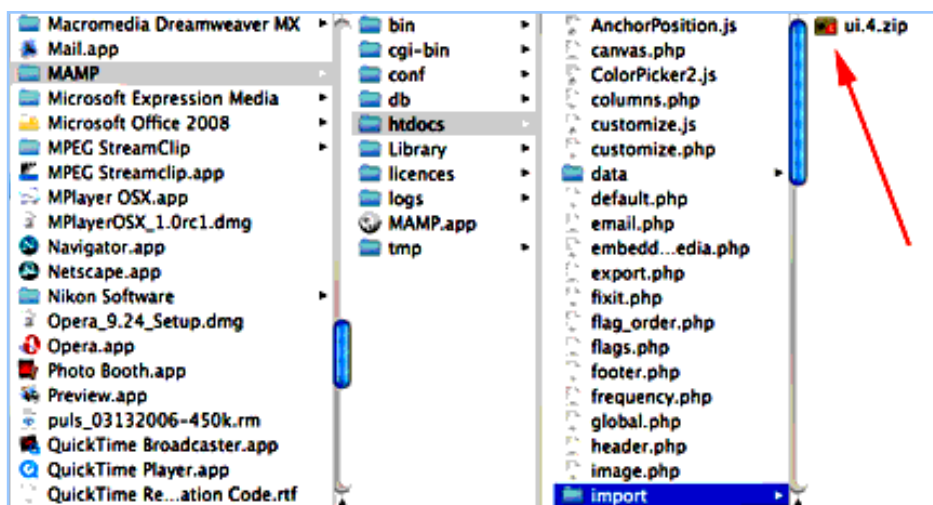
Open the MAMP Folder inside Applications.

Open the htdocs folder inside MAMP.

Open the import folder inside htdocs.

Copy or drag and drop the zipped file into the import folder.

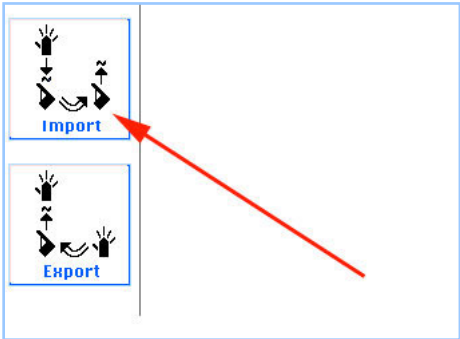
The path is:  
[/Applications/MAMP/htdocs/import](#)



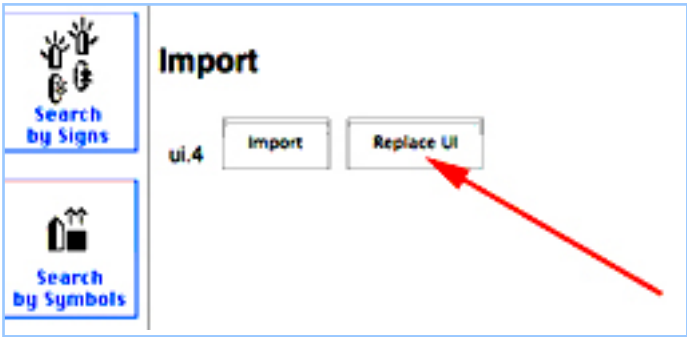
4. Now open your PersonalPuddle:



5. Scroll down. Click on the Import Button:



6. A screen will appear with two buttons: Import and Replace UI

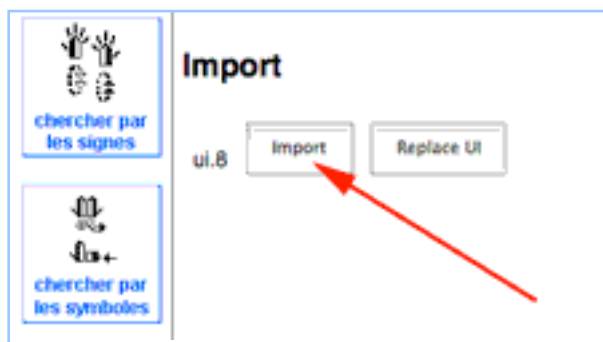


7. To REPLACE the current User Interface, click on the Replace UI button. Your screen will say Success!



8. Click the Red Umbrella. You can now use the new User Interface.

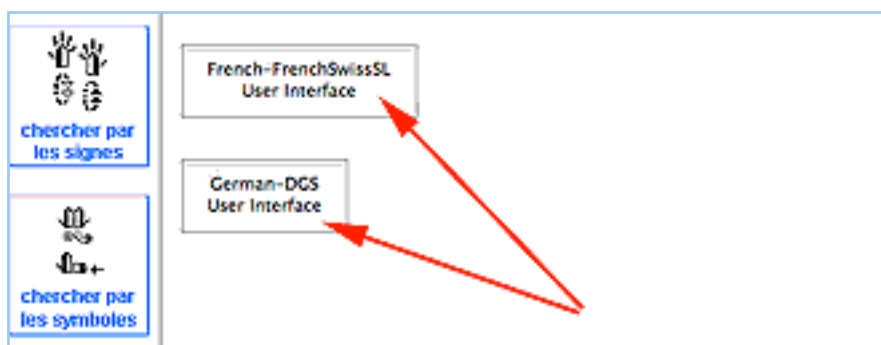
9. To ADD a second User Interface, without replacing the current one, click on the Import Button instead:



10. Your screen will say Success. Then click on the Red Umbrella:



11. This will take you to the User Interface Home Page. Click on the User Interface you wish to use:



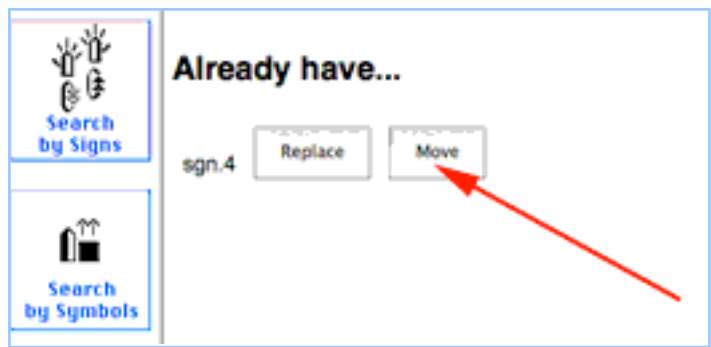
12. You can switch back and forth between the two User Interfaces. To switch User Interfaces, click on the Red Umbrella several times to find the User Interface Home Page.

# Part 4: Importing Files With The Same Name

## HOW TO SAVE & RENAME AN OLD FILE

1. When importing SignPuddle files from the web, if the new imported file has the SAME name as an older file on your PersonalPuddle, a screen will appear, providing a choice to REPLACE the old file (the old file will be deleted), or MOVE the old file to another name.

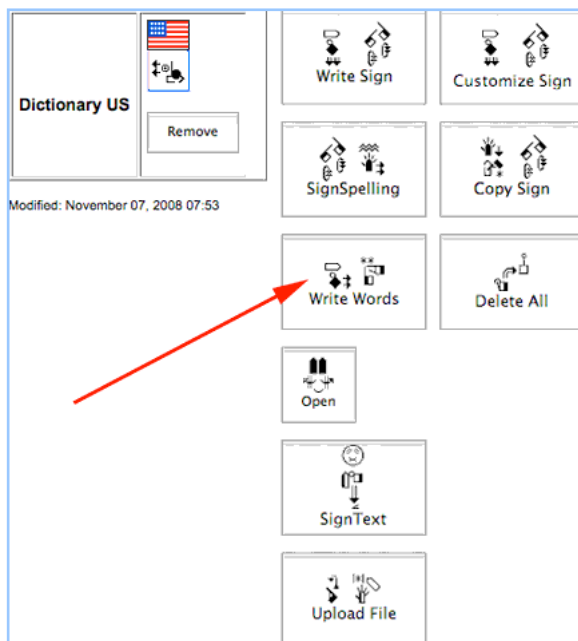
Click on the MOVE button. MOVE means to SAVE the old file and RE-NAME the old file, so it is NOT deleted:



2. A Success screen will appear, with a choice to rename the OLD file, or rename the NEW file. To rename the OLD file, click on the Edit Puddle Details button in the OLD file box:



3. This screen will appear. To rename the file, click on the Write Words button:



4. This screen will appear. Type the new name for the file, and press the Update Button:

Terms:	Dictionary US OLD COPY		
Text:			
Source:			
	<div>Update</div>		

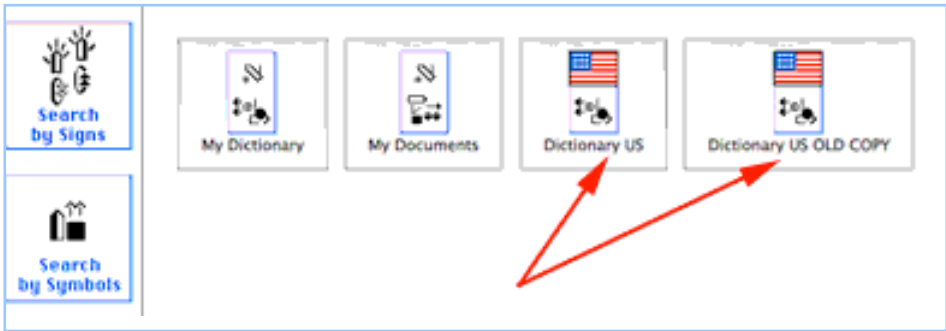
5. This screen will appear. It shows that the file has now been renamed:



6. Click on the Red Umbrella to return to the Home Page:



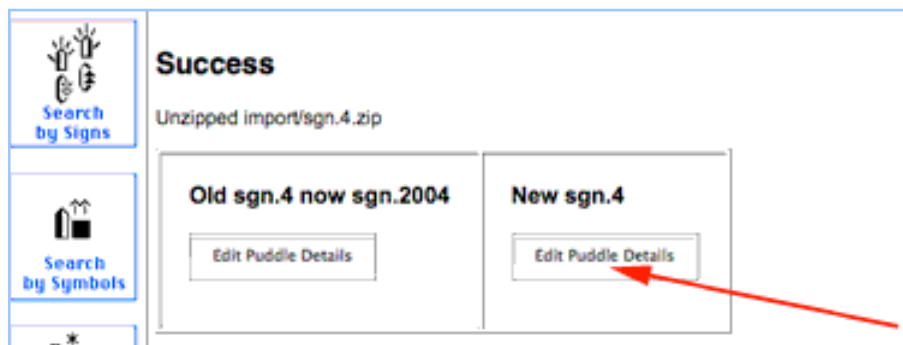
7. The renamed OLD file, and the imported NEW file, now appear on the Home Page. You will be able to work with both files:



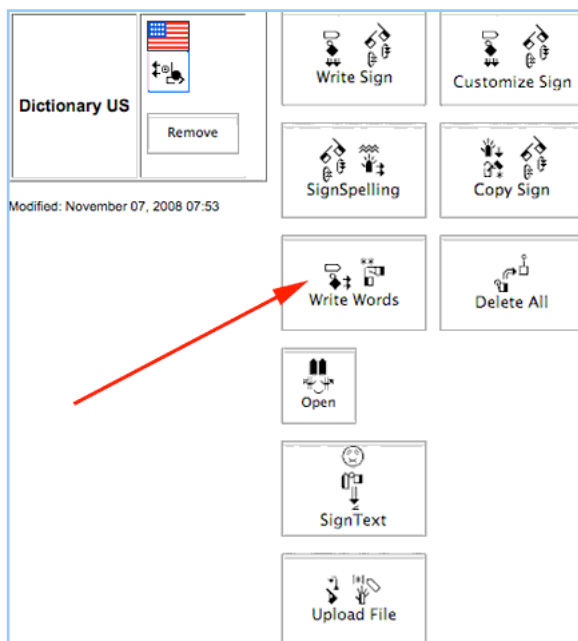


## TO RENAME THE NEW FILE

1. To rename the NEW file, click on the Edit Puddle Details button in the NEW file box:




2. This screen will appear. To rename the file, click on the Write Words button:




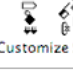
3. This screen will appear. Type the new name for the file, and press the Update Button:


Terms:	Dictionary US NEW		
Text:			
Source:			
	<input type="button" value="Update"/>		

4. This screen will appear. It shows that the file has now been renamed:

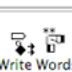
  
**Dictionary US NEW**  
  
Modified: November 07, 2008 08:23


  
Write Sign

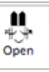
  
Customize Sign


  
SignSpelling


  
Copy Sign

  
Write Words

  
Delete All

  
Open

  
SignText

  
Upload File

5. Click on the Red Umbrella to return to the Home Page:

  
Connect to  
SignPuddle  
Online

  
Home

  
SignPuddle™

6. The renamed NEW file now appears on the Home Page, along with other files:



7. To learn how to use SignPuddle software, go to:

SignPuddle Help

<http://www.signbank.org/signpuddle/help/>

and watch the Instruction Videos that teach you how to use SignPuddle...

SignPuddle Instruction Videos

<http://www.signbank.org/signpuddle/help/SignPuddle15VideoUS/>

Download the SignPuddle Reference Manual...

SignPuddle Reference Manuals in English, German, French and Arabic

<http://www.SignBank.org/signpuddle/help/index.html#Manual>

Join the SignWriting List for Technical Support:

<http://www.signwriting.org/forums/swlist/>

SignPuddle Products

<http://www.SignBank.org/signpuddle/help/index.html#Information>

For technical support, call or write anytime:

Valerie Sutton

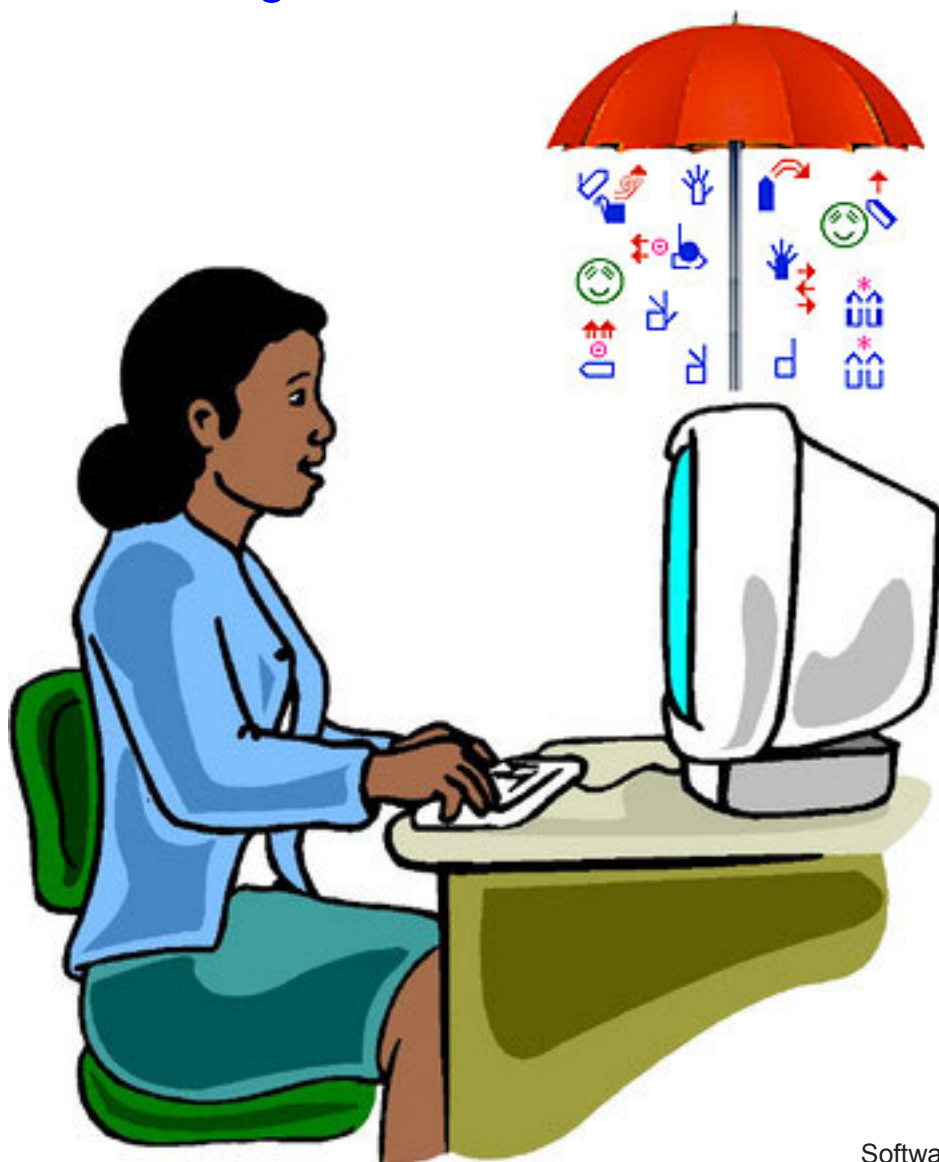
[Sutton@SignWriting.org](mailto:Sutton@SignWriting.org)

858-456-0098

Steve Slevinski

[slevin@signpuddle.net](mailto:slevin@signpuddle.net)

# SignPuddle™ Software



Software by  
Steve Slevinski.

Published by the  
SignWriting Press  
P.O. Box 517,  
La Jolla, CA.  
92038-0517, USA  
tel: 858-456-0098  
[www.SignWriting.org](http://www.SignWriting.org)