

How to Install the PersonalPuddle^{v1.2} for Windows

Write Sign Languages in SignWriting
Using SignPuddle Without An Internet Connection
For Windows 95 through Windows Vista



Software by Stephen E. Slevinski Jr.
slevin@signpuddle.net

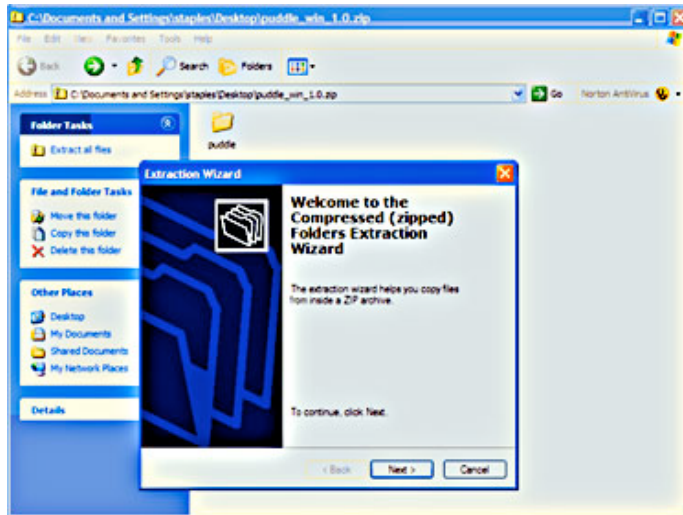
Need help? Technical Support:
Voice Telephone: 858-456-0098
Voice & Sign on Skype: valeriesutton

SignBank.org/signpuddle • SignPuddle.org • SignWriting.org
SignWriting Press, P.O. Box 517, La Jolla, CA. 92038-0517, USA • sutton@signwriting.org

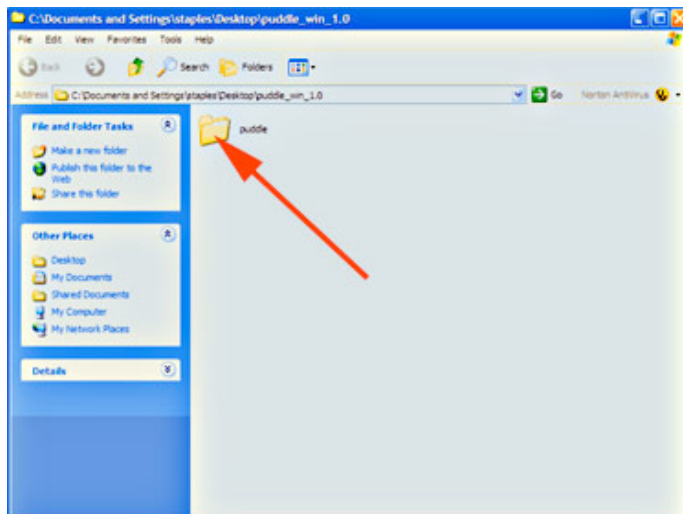
PersonalPuddle for Windows

Part 1: How to Begin

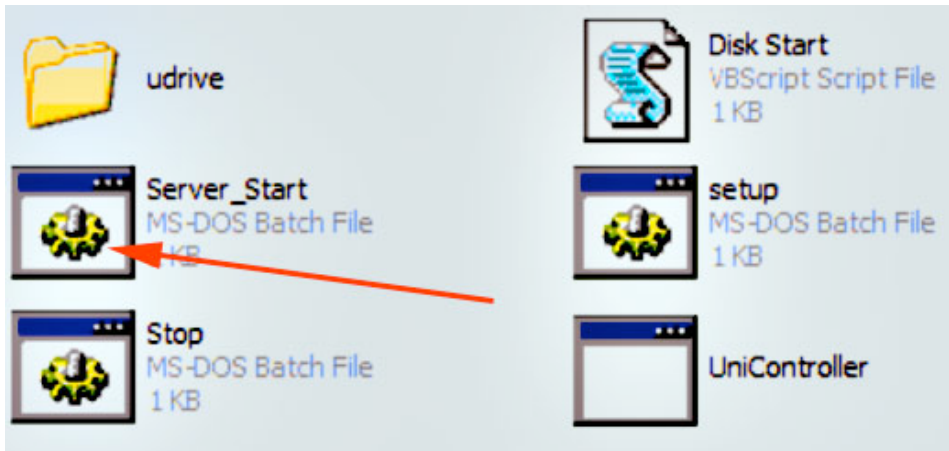
1. Download the PersonalPuddle for Windows, or drag the zipped file from the CD, to your Windows computer desktop. The file is named: puddle_win_1.2.zip
2. Double click on the file, to decompress and extract the folder....



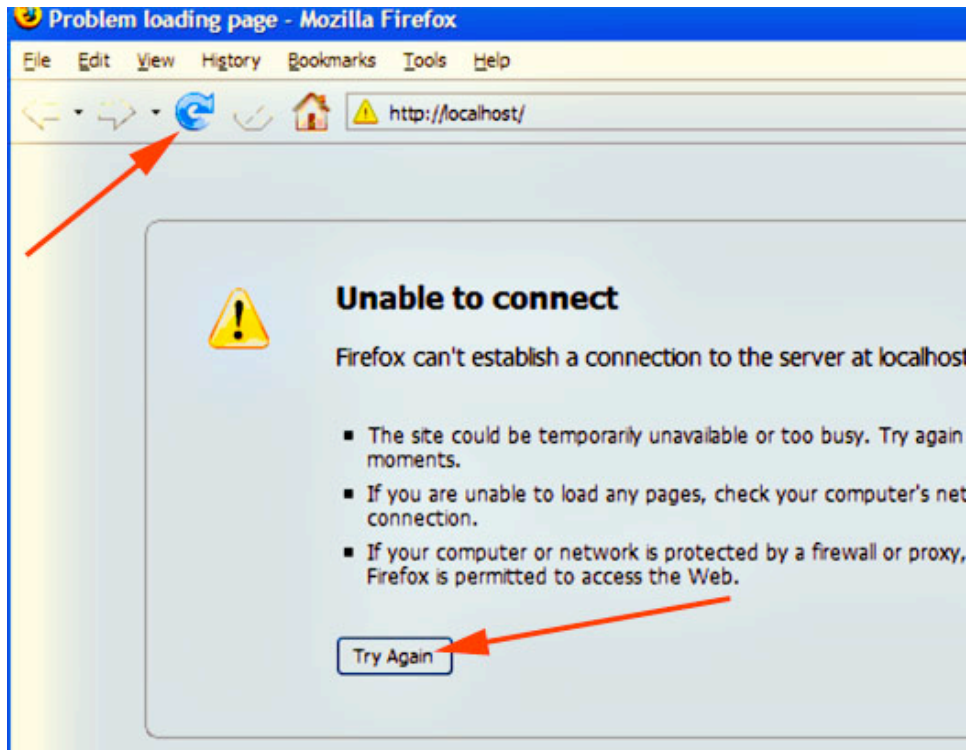
3. The unzipped folder is named: puddle
Open the puddle folder:



4. Inside the puddle folder, open the file named Server_Start:



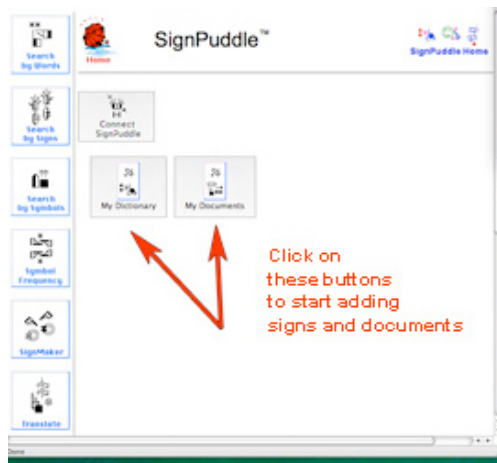
5. The Universal Server will start to open in your web browser... Sometimes it doesn't start the first time. A screen comes up and says Unable to Connect. Click on the Try Again button, or click on the Reload Browser button at the top of the page.



6. The PersonalPuddle opens inside your web browser. SignPuddle is designed to work best in Firefox. It is best to set FireFox as your default web browser, so you use Firefox when you work in your PersonalPuddle.



7. Now you can start working in SignPuddle, by clicking on My Dictionary or My Documents. These are empty files, waiting for you to add new entries:



8. If you have an internet connection, you can click on the button “Connect SignPuddle” to visit SignPuddle Online, staying within the same Firefox browser. Then you can use your Back Button at the top of Firefox to return to your PersonalPuddle, on your computer desktop. So you can move back and forth, between the online and desktop versions of SignPuddle, if you have an internet connection:



9. If you do not have an internet connection, you can continue to work in My Dictionary and My Documents, adding your own signs and documents, without visiting the internet. Those are your own private files, that do not need an internet connection.



10. If you have an internet connection, you can import SignPuddle files from SignPuddle Online. For example, you can place the ASL Dictionary SignPuddle file from the web, into your PersonalPuddle, so you can work with it, without an internet connection. See next section for instructions on how to IMPORT a SignPuddle file.

Part 2: Importing Puddles from the Web

1. To import a SignPuddle file, go to SignPuddle Online:

SignPuddle Online

<http://www.signbank.org/signpuddle>

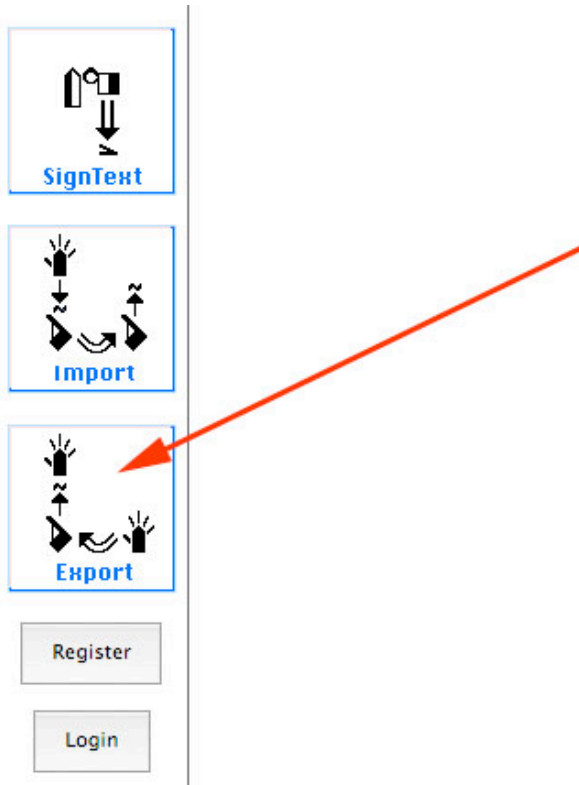


2. Open the SignPuddle file you wish to import, for example, the ASL Dictionary:

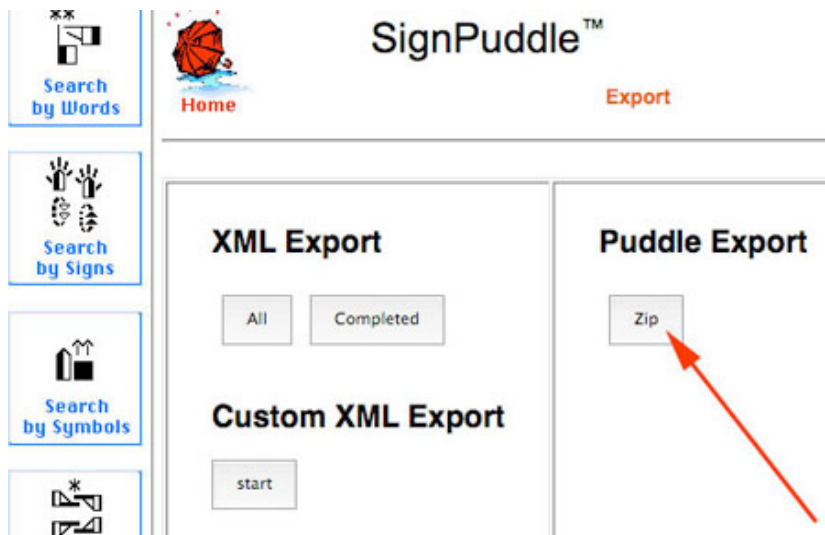
SignPuddle ASL Dictionary

<http://www.signbank.org/SignPuddle1.5/index.php?ui=1&sgn=4>

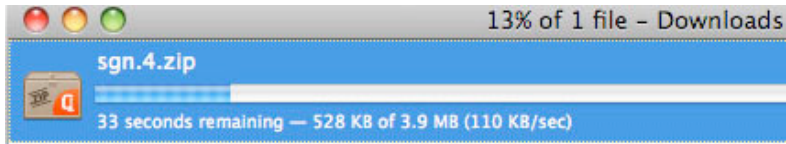
3. Once the ASL Dictionary puddle is open, scroll down. Click on the Export Button:



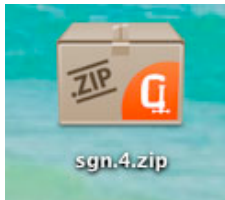
4. This Export Screen will appear. Click on the Puddle Export, Zip button:



5. It will take some time to download the zip file onto your Desktop:



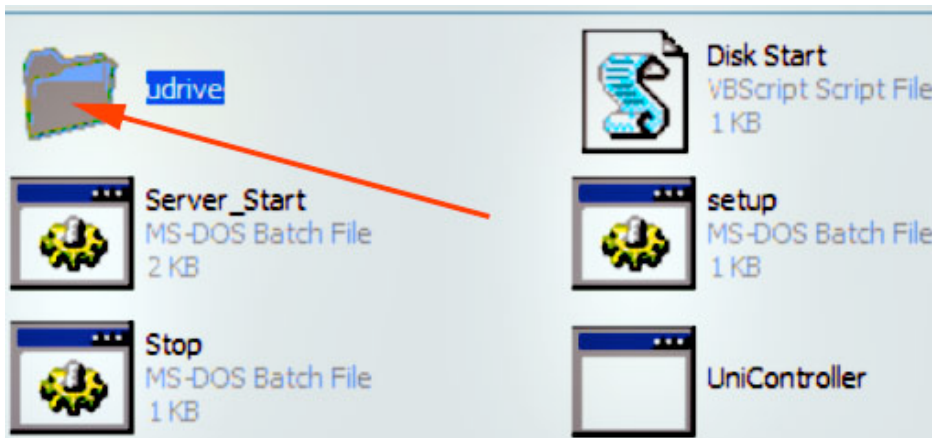
6. The zipped file lands on your desktop:



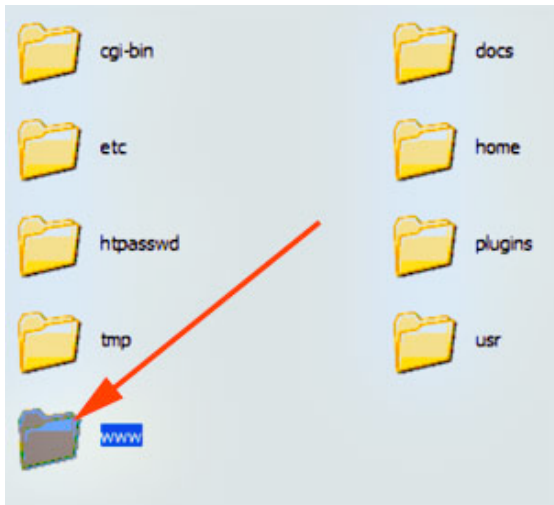
7. To import, you need to copy the Puddle.zip file you just downloaded, into the import folder. Here is how...

How to
Copy Puddle.zip files to:
W:\www\import

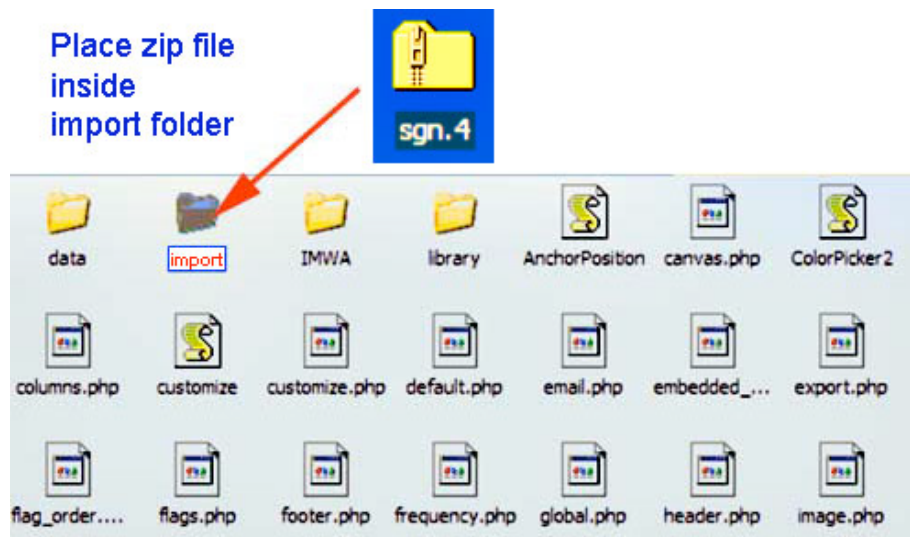
a. Open the **udrive** folder.



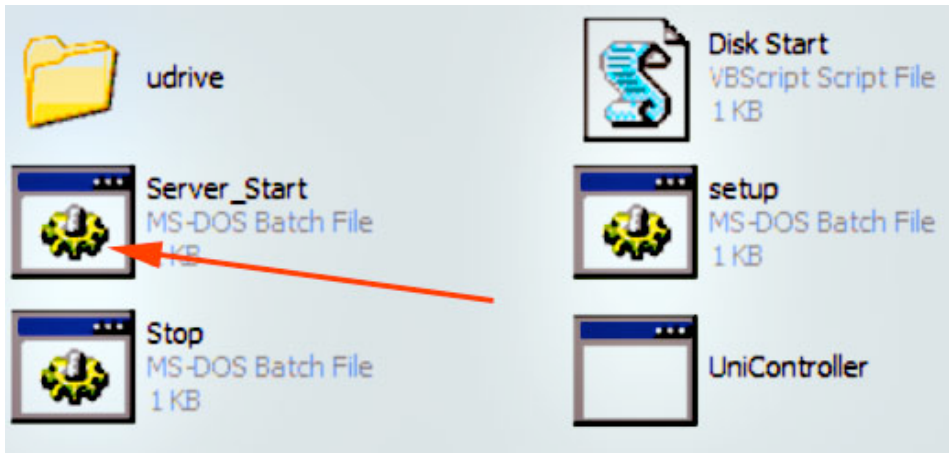
b. Inside the **udrive** folder, open the **www** folder:



c. Inside the **www** folder, open the **import** folder.
Place the zip file inside the import folder.



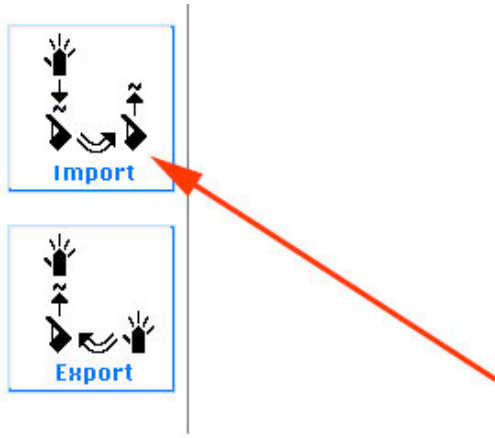
8. Now open the Server_Start file again.



9. Your PersonalPuddle begins again, opening inside Firefox:



10. Scroll down. Click on the Import Button:



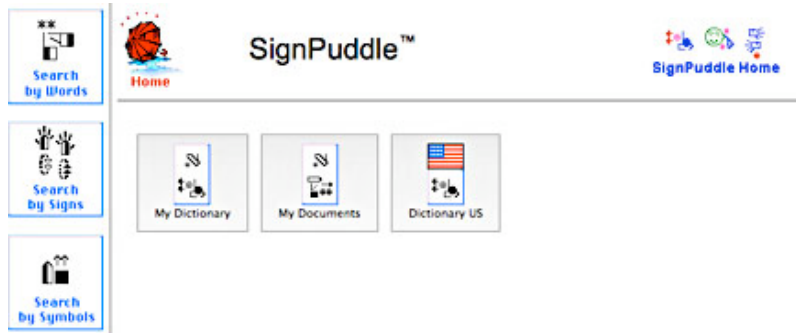
11. This screen will appear:



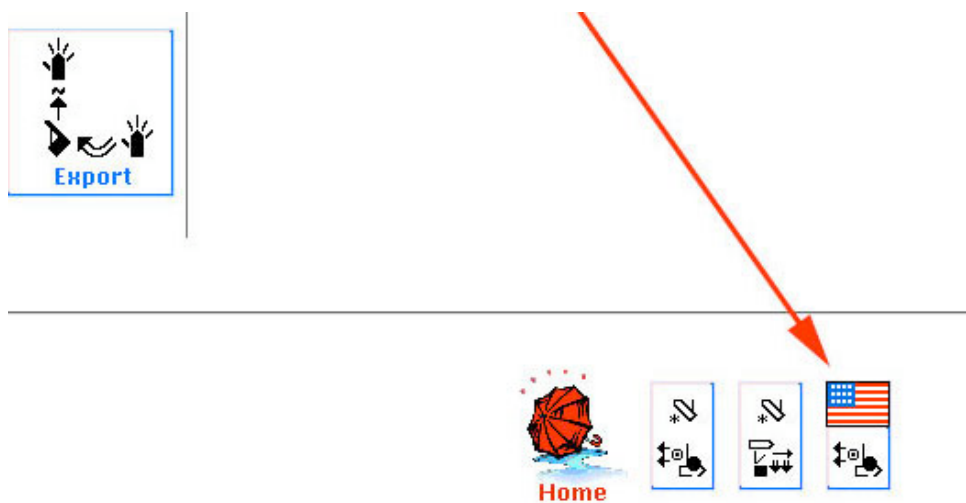
12. Click the Import Button. Your screen will say Success!



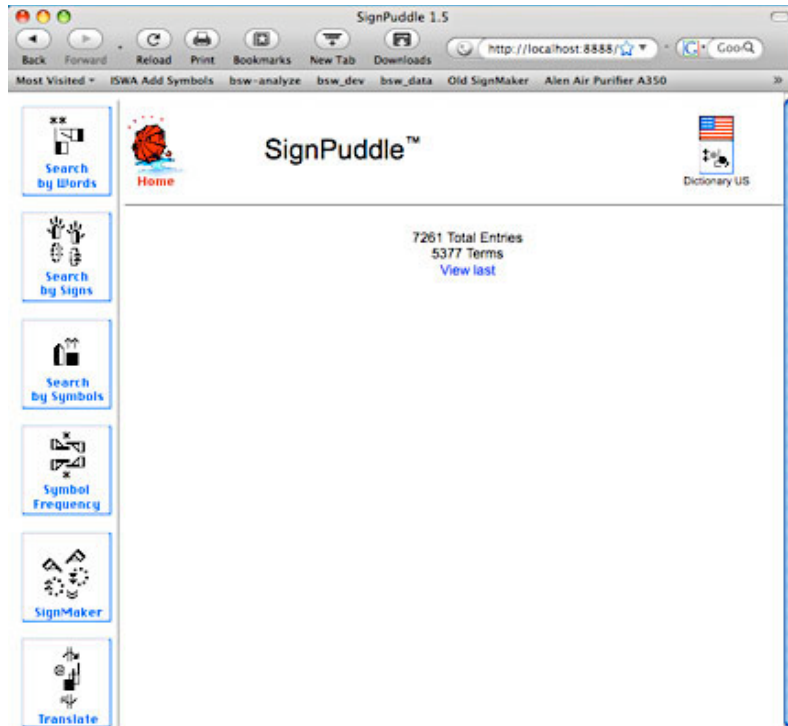
13. Click the Red Umbrella. You now have the imported SignPuddle file inside your PersonalPuddle, for you to use privately on your computer, without a connection to the internet!



14. Then icons for your files are also located at the bottom of the screen:



15. Double click on the icon for the file to start using it immediately!



16. To learn how to use SignPuddle software, go to:

SignPuddle Help

<http://www.signbank.org/signpuddle/help/>

and watch the Instruction Videos that teach you how to use SignPuddle...

SignPuddle Instruction Videos

<http://www.signbank.org/signpuddle/help/SignPuddle15VideoUS/>

Download the SignPuddle Reference Manual...

SignPuddle Reference Manuals in English, German, French and Arabic

<http://www.SignBank.org/signpuddle/help/index.html#Manual>

Join the SignWriting List for Technical Support:

<http://www.signwriting.org/forums/swlist/>

SignPuddle Products

<http://www.SignBank.org/signpuddle/help/index.html#Information>

Part 3: Importing User Interfaces in Different Languages

A User Interface is the language and icons used to help you navigate and use the software.

The PersonalPuddle User Interface opens in English and American Sign Language.

You can download and install other User Interfaces in other languages, including:

Czech and Czech Sign Language
French and French-Swiss Sign Language
German and German Sign Language
Norwegian and Norwegian Sign Language
Spanish and Spanish Sign Language
Blind-User-Interface for French users

HOW TO IMPORT A USER INTERFACE

1. Here are the links to different User Interfaces. Paste one of these links into the url of your web browser and press Enter or Return:

Norwegian and Norwegian Sign Language User Interface
<http://www.signbank.org/signpuddle1.5/zipit.php?ui=0&sgn=3>

French and French-Swiss Sign Language User Interface
<http://www.signbank.org/signpuddle1.5/zipit.php?ui=0&sgn=4>

Spanish and Spanish Sign Language User Interface
<http://www.signbank.org/signpuddle1.5/zipit.php?ui=0&sgn=5>

Czech and Czech Sign Language User Interface
<http://www.signbank.org/signpuddle1.5/zipit.php?ui=0&sgn=6>

German and German Sign Language User Interface
<http://www.signbank.org/signpuddle1.5/zipit.php?ui=0&sgn=8>

Blind User Interface for French-French-Swiss Sign Language
<http://www.signbank.org/signpuddle1.5/zipit.php?ui=0&sgn=10>

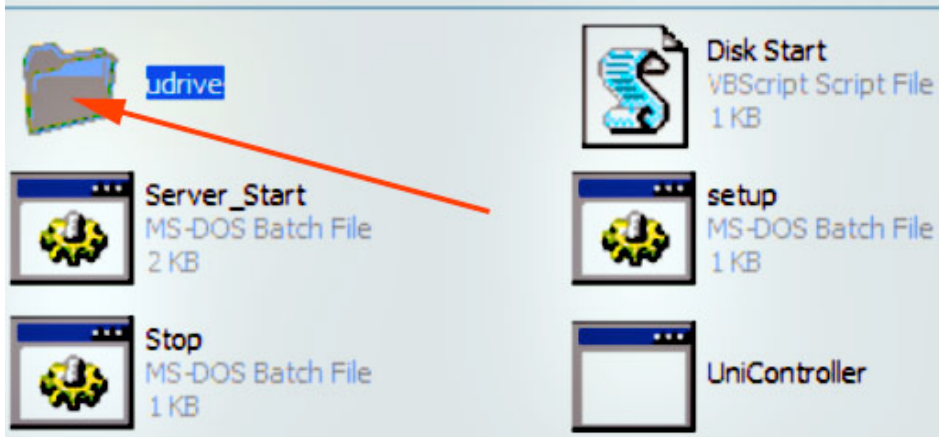
2. The user interface you chose will download to your desktop:



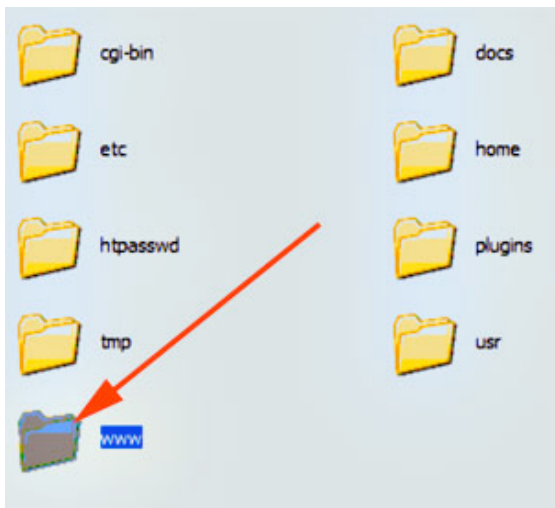
3. To import, you need to copy the Puddle.zip file you just downloaded, into the import folder. Here is how...

How to
Copy Puddle.zip files to:
W:\www\import

a. Open the **udrive folder**.

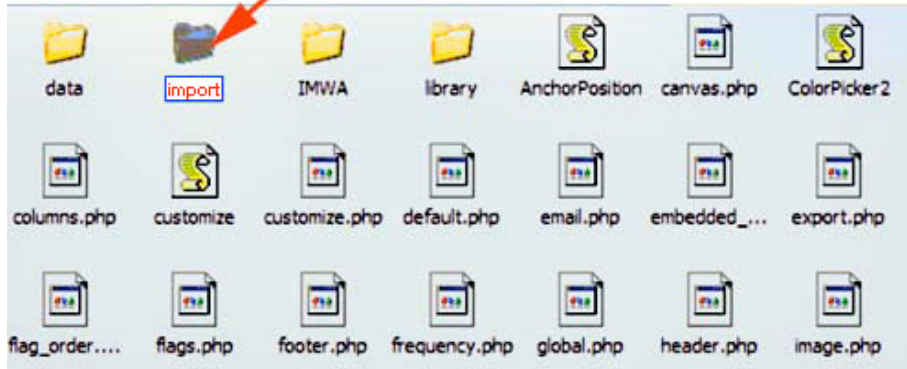
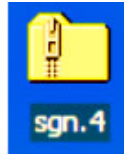


b. Inside the **udrive** folder, open the **www** folder:

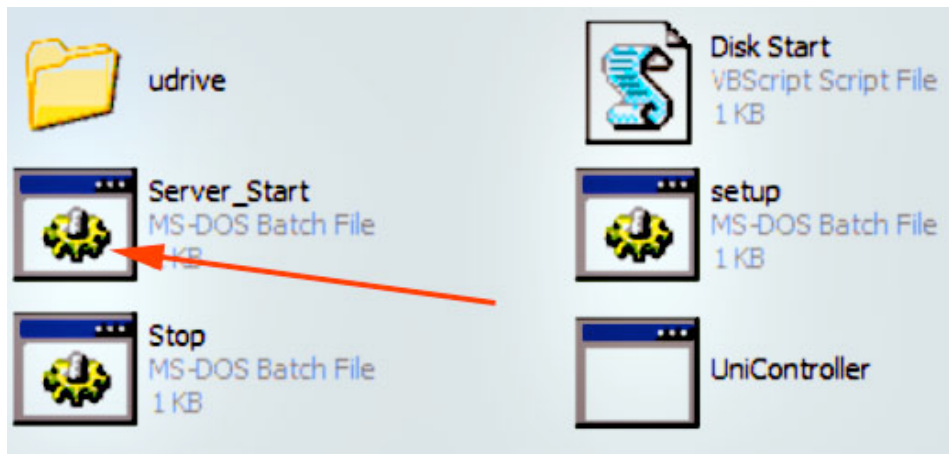


c. Inside the **www** folder, open the **import** folder.
Place the zip file inside the import folder.

Place zip file
inside
import folder



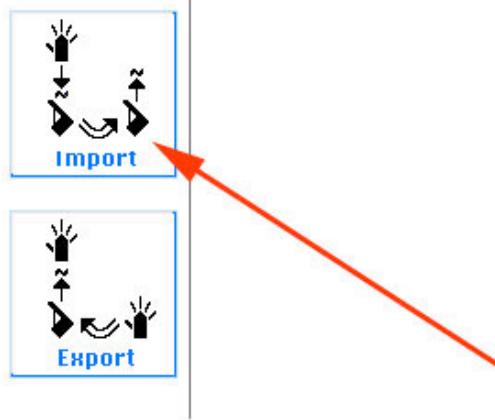
4. Now open the Server_Start file again.



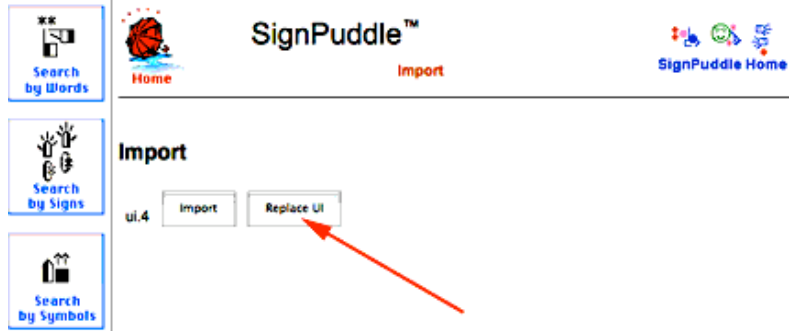
...your PersonalPuddle begins again, opening inside Firefox:



5. Scroll down. Click on the Import Button:



6. A screen will appear with two buttons: Import and Replace UI



7. To REPLACE the current User Interface, click on the Replace UI button. Your screen will say Success!



8. Click the Red Umbrella. You can now use the PersonalPuddle with the new User Interface.

9. To ADD a second User Interface, without replacing the current one, click on the Import Button instead:



10. Your screen will say Success. Then click on the Red Umbrella:



11. This will take you to the User Interface Home Page. Click on the User Interface you wish to use:



12. You can switch back and forth between the two User Interfaces. To switch User Interfaces, click on the Red Umbrella several times to find the User Interface Home Page.

Part 4: Importing A New File That Has The Same Name As An Old File

HOW TO SAVE & RENAME AN OLD FILE

1. When importing SignPuddle files from the web, if the new imported file has the SAME name as

an older file on your PersonalPuddle, a screen will appear, providing a choice to REPLACE the old file (the old file will be deleted), or MOVE the old file to another name.

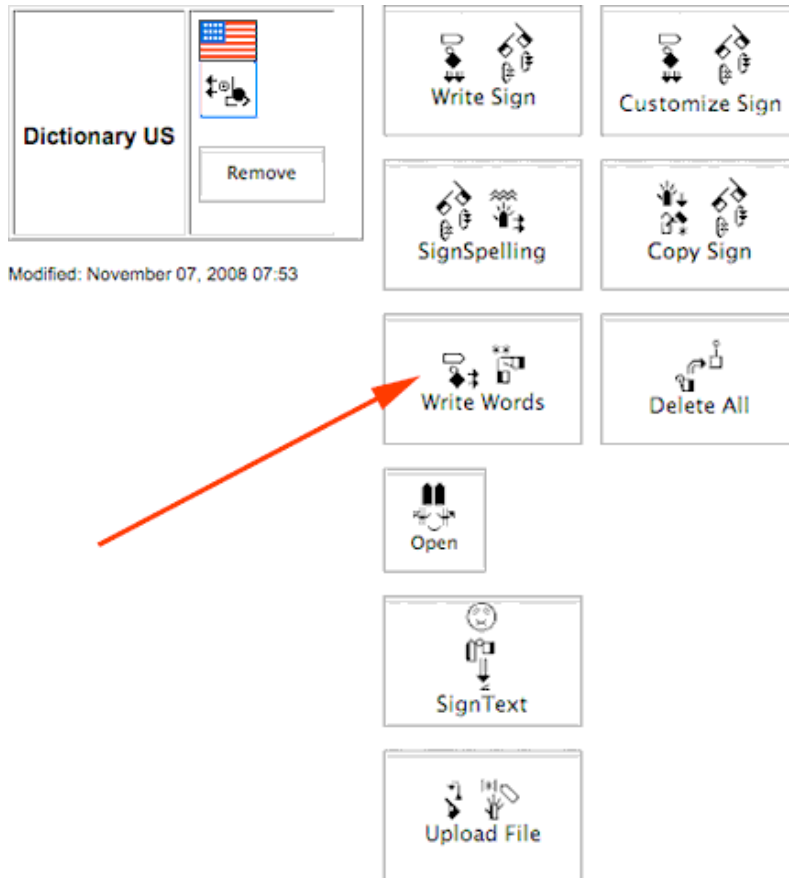
Click on the MOVE button. MOVE means to SAVE the old file and RENAME the old file, so it is NOT deleted:



2. A Success screen will appear, with a choice to rename the OLD file, or rename the NEW file. To rename the OLD file, click on the Edit Puddle Details button in the OLD file box:



3. This screen will appear. To rename the file, click on the Write Words button:



4. This screen will appear. Type the new name for the file, and press the Update Button:

| | | | |
|---------|------------------------|--|--------|
| Terms: | Dictionary US OLD COPY | | |
| Text: | | | |
| Source: | | | |
| | | | Update |

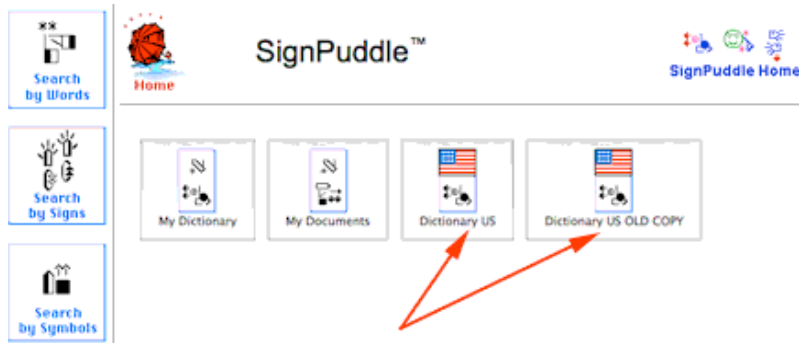
5. This screen will appear. It shows that the file has now been renamed:



6. Click on the Red Umbrella to return to the Home Page:



7. The renamed OLD file, and the imported NEW file, now appear on the Home Page. You will be able to work with both files:

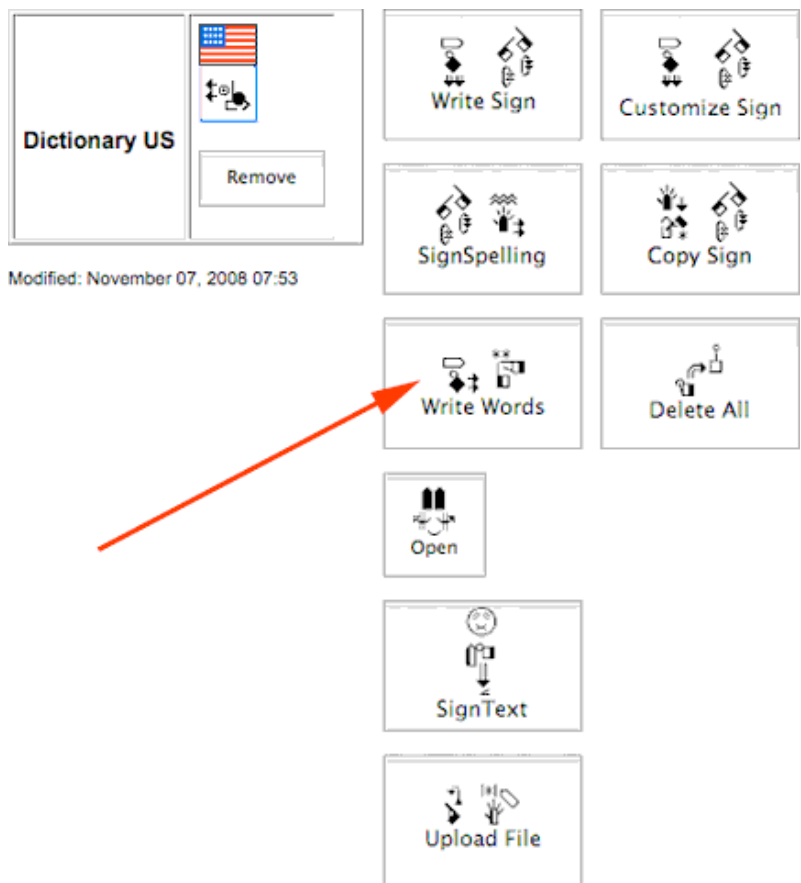


TO RENAME THE NEW FILE

1. To rename the NEW file, click on the Edit Puddle Details button in the NEW file box:



2. This screen will appear. To rename the file, click on the Write Words button:




3. This screen will appear. Type the new name for the file, and press the Update Button:

| | | | |
|---------|-------------------|--|--------|
| Terms: | Dictionary US NEW | | |
| Text: | | | |
| Source: | | | |
| | | | Update |

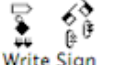
4. This screen will appear. It shows that the file has now been renamed:

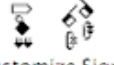
Dictionary US NEW


Modified: November 07, 2008 08:23




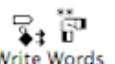
Remove

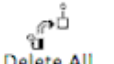

Write Sign



Customize Sign



SignSpelling

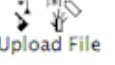

Copy Sign


Write Words


Delete All


Open

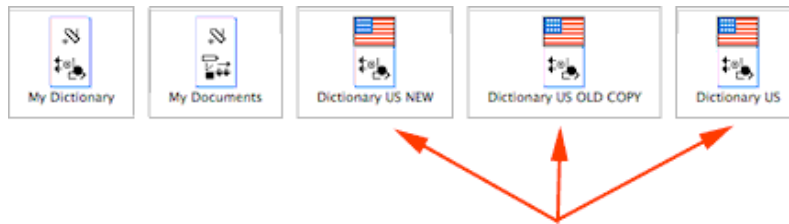

SignText


Upload File

5. Click on the Red Umbrella to return to the Home Page:



6. The renamed NEW file now appears on the Home Page, along with other files:



7. To learn how to use SignPuddle software, go to:

SignPuddle Help

<http://www.signbank.org/signpuddle/help/>

and watch the Instruction Videos that teach you how to use SignPuddle...

SignPuddle Instruction Videos

<http://www.signbank.org/signpuddle/help/SignPuddle15VideoUS/>

Download the SignPuddle Reference Manual...

SignPuddle Reference Manuals in English, German, French and Arabic

<http://www.SignBank.org/signpuddle/help/index.html#Manual>

Join the SignWriting List for Technical Support:

<http://www.signwriting.org/forums/swlist/>

SignPuddle Products

<http://www.SignBank.org/signpuddle/help/index.html#Information>

For technical support, call or write anytime:

Valerie Sutton

Sutton@SignWriting.org

858-456-0098

Steve Slevinski

slevin@signpuddle.net