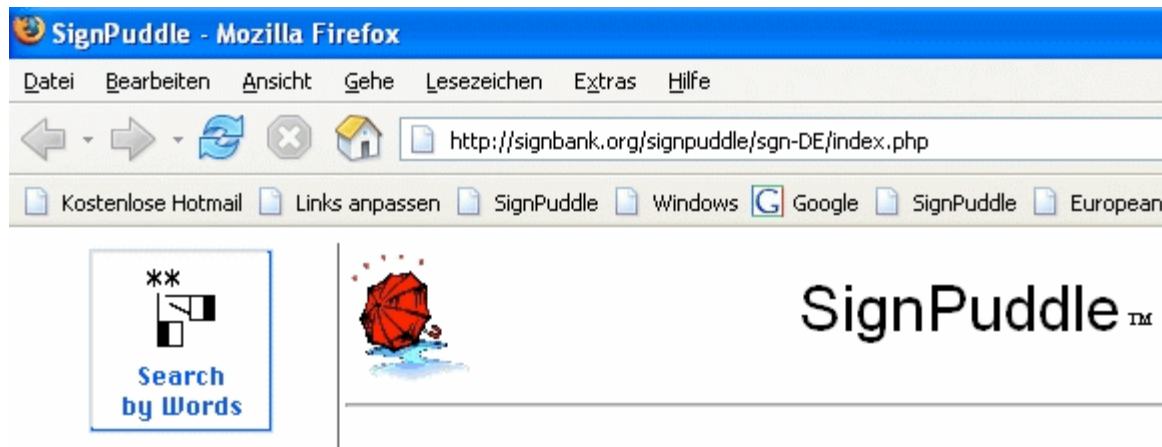
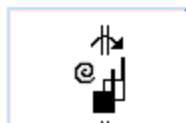


# How to create your own SW materials using SignPuddle ?

1) Go to the website of that SignPuddle dictionary you want to work with.



2) Activate the button "Symbol Frequency" on the left side






3) You will get a list of all the entries with specific hand shapes.

SignPuddle allows to get a very quick impression on how often any given hand shape is part of a sign in the dictionary.

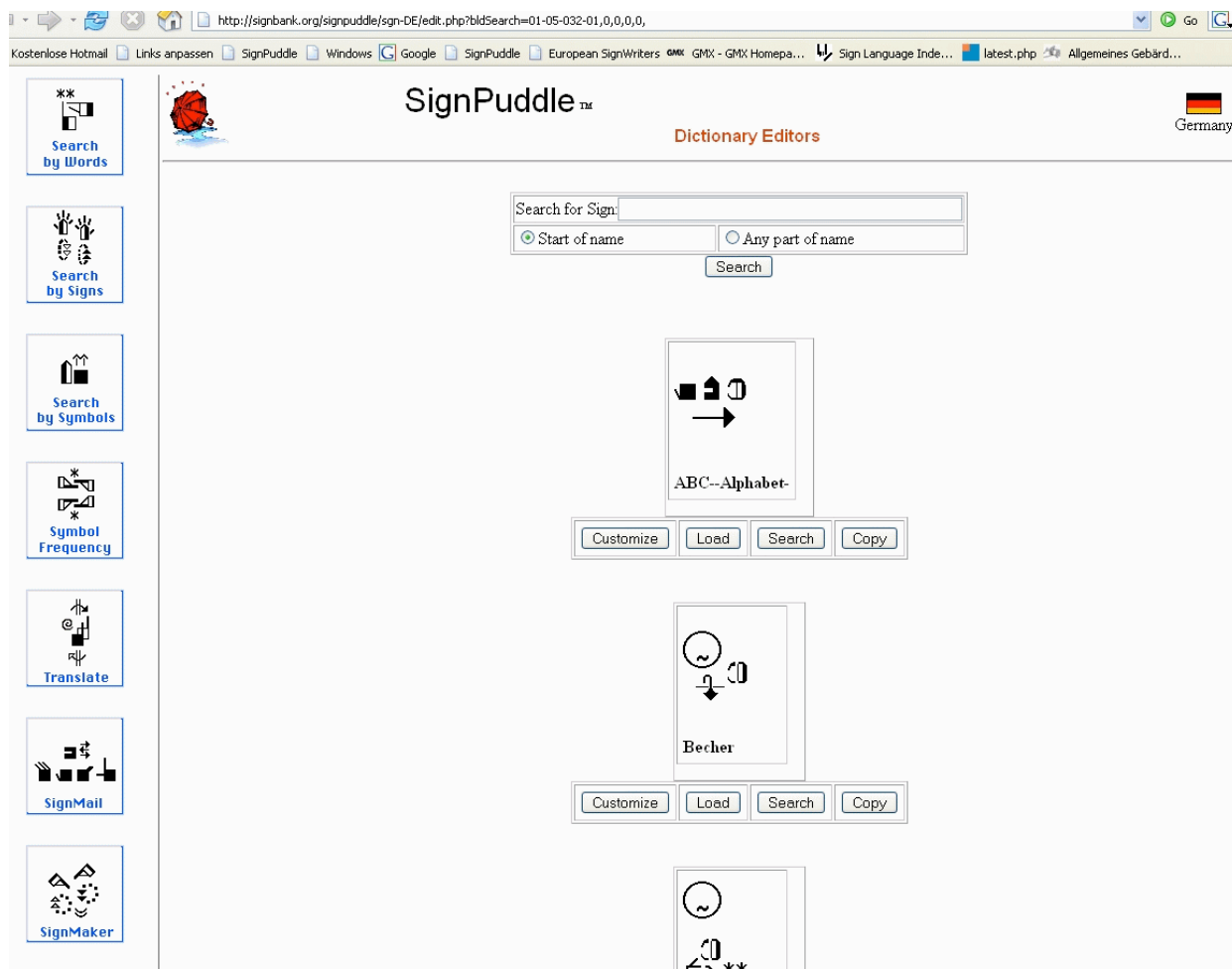
You may be interested in signs with the C = hand shape (open cup)



4) So you look for this group ask for the whole list!

x 226
 <a href="#">016-01</a>
x 11
 <a href="#">032-01</a>
x 23
 <a href="#">033-01</a>
x 4

5) After a few seconds – what a miracle – the screen is filled with a list of all these signs that include this hand shape! (big smile - and congrats to Valerie Sutton and Steve Slevinski )



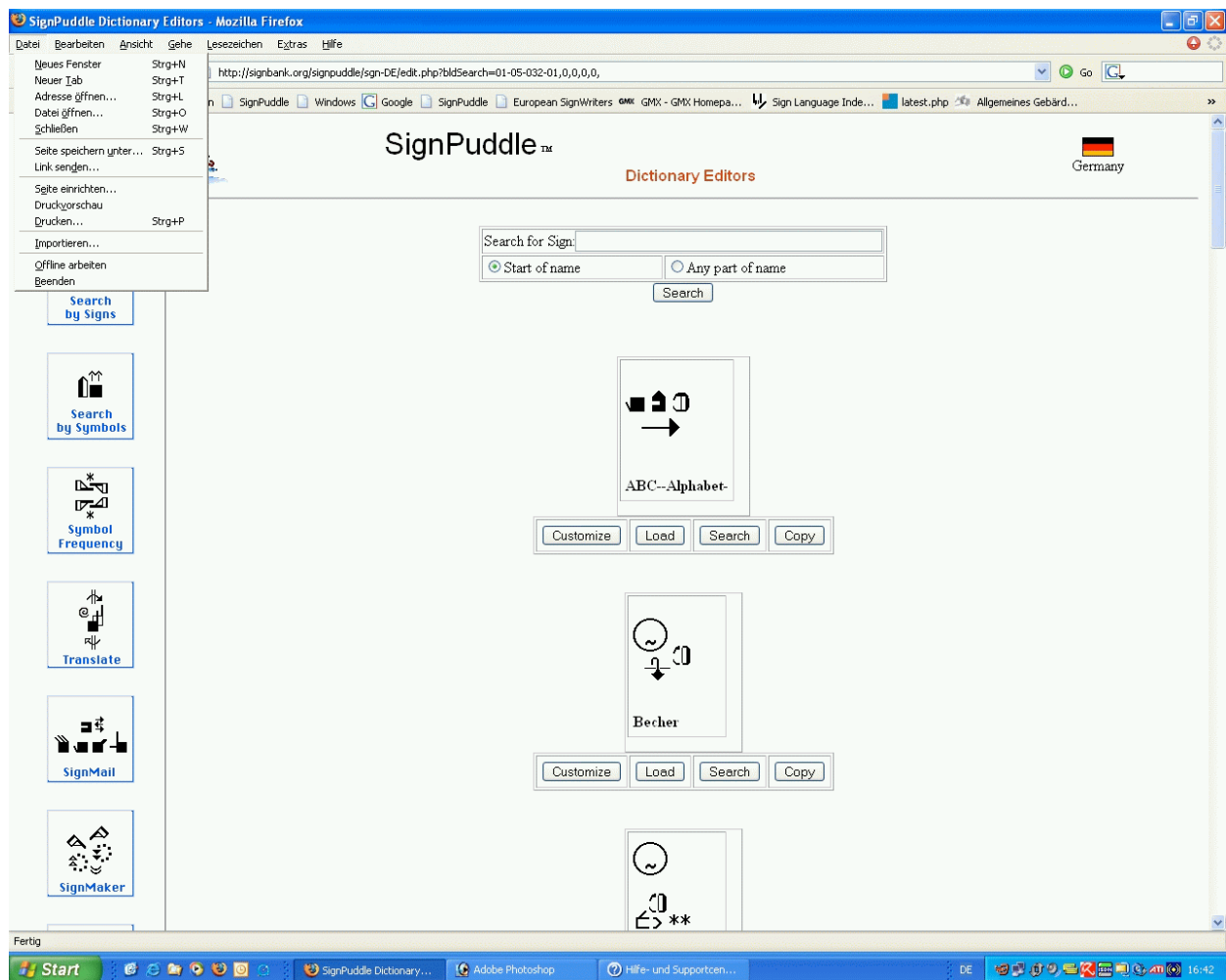
6) Now you are interested to use these graphics offline in order to prepare different kind of teaching/learning materials.

How to get these symbols into your computer?

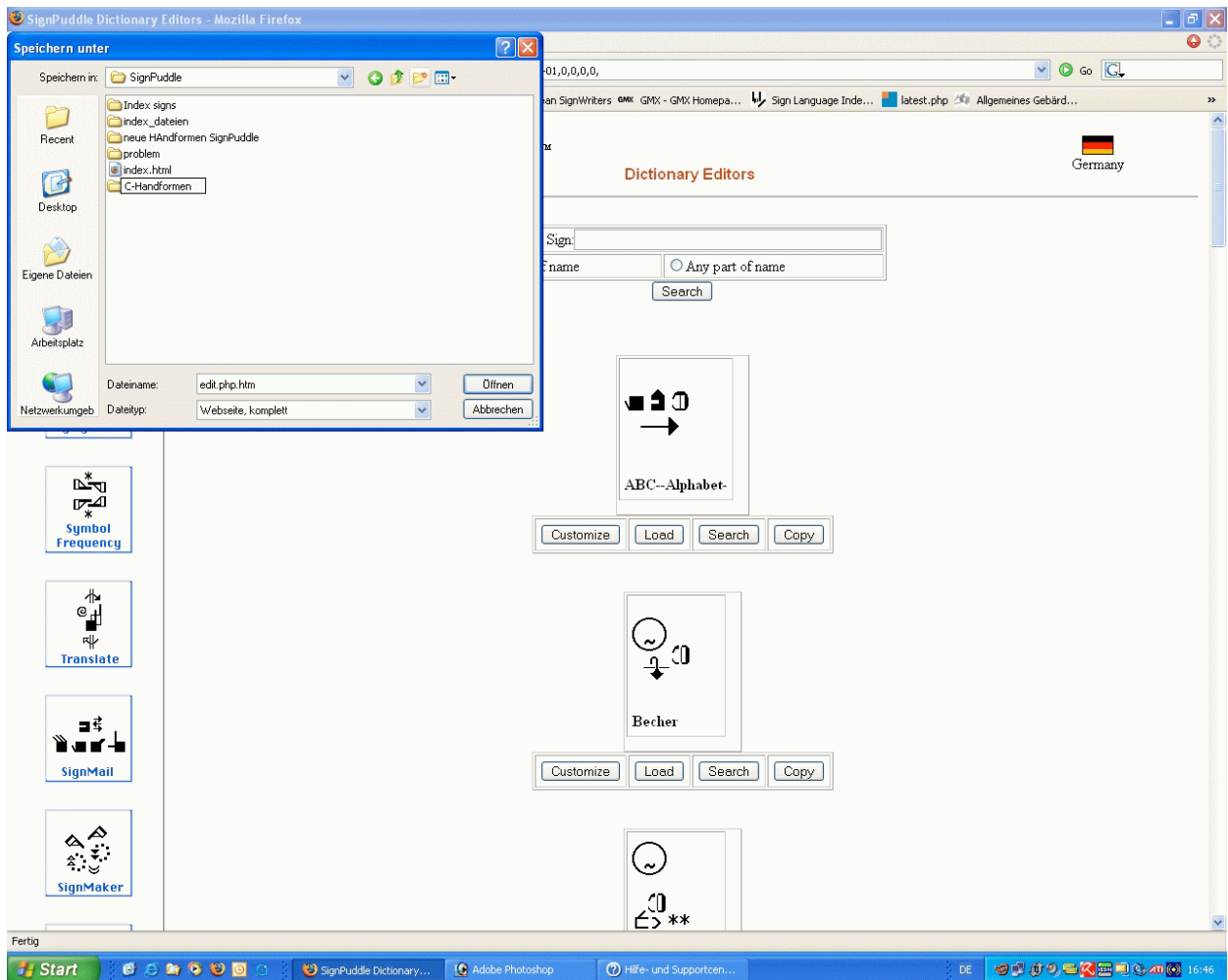
There may be more intelligent solutions – and all the software experts are asked to offer the other options.

But I get along with the procedure described in the next steps.

Press “Strg” + “S” or “Ctrl” + “S” in order to save this website on your computer.

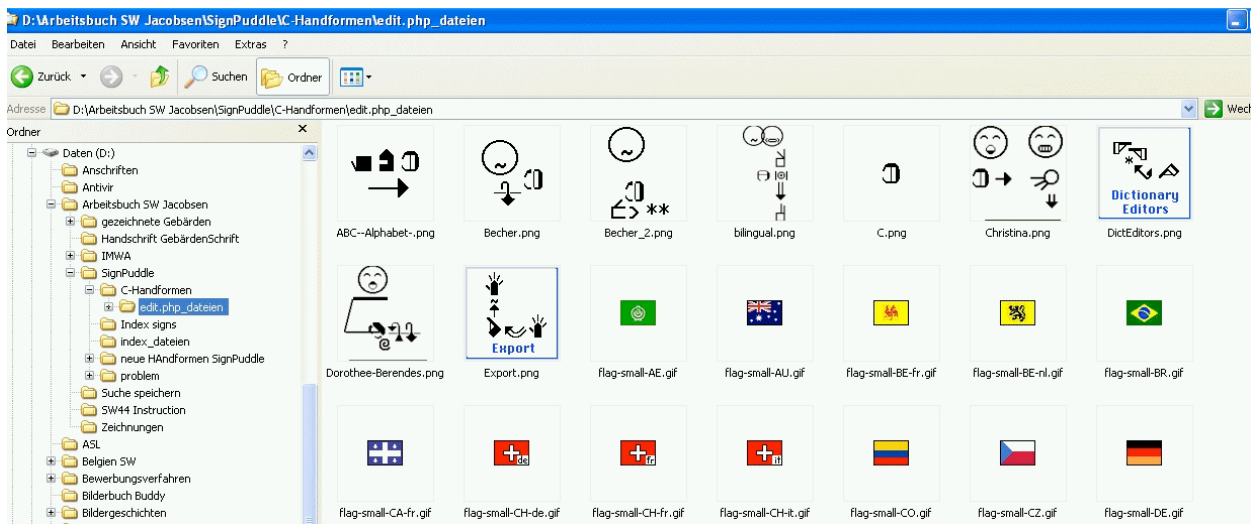


7) I select a harddrive where to create a new folder and give a name to it.  
(C- Handformen)



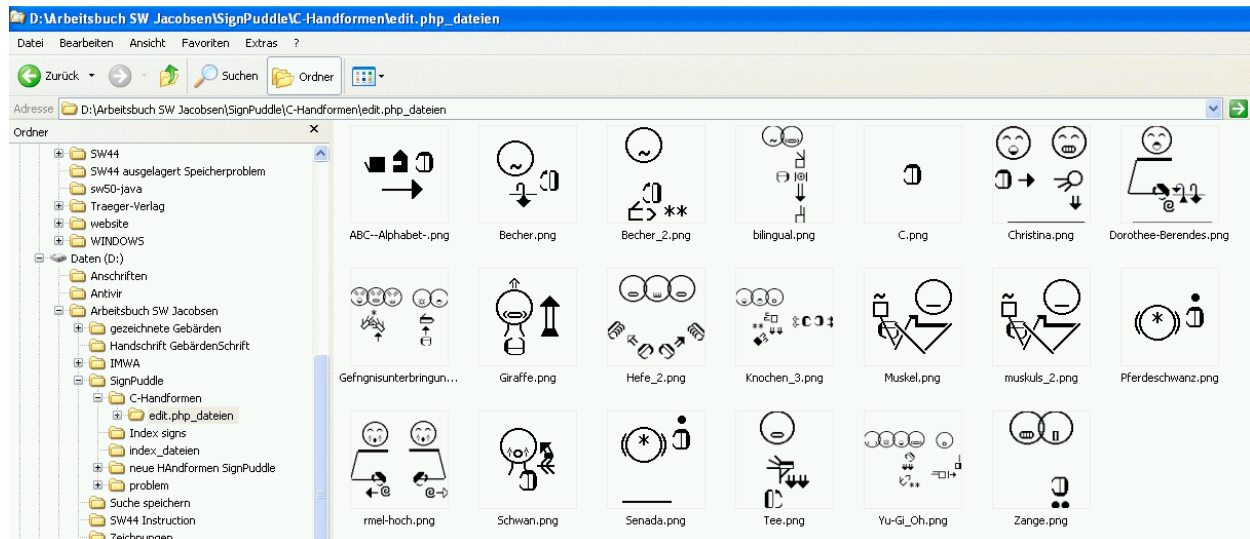
8) That's it. Congratulation! You got a list with all the graphics of this Website on your computer in your new folder.

Let's get offline and open your Explorer. Look for the new folder and – wow – all the little graphics are to be seen –



9) You may want to delete the graphics that are not of interest in this case.

So you can delete these signs and preserve the C-hand shape signs.



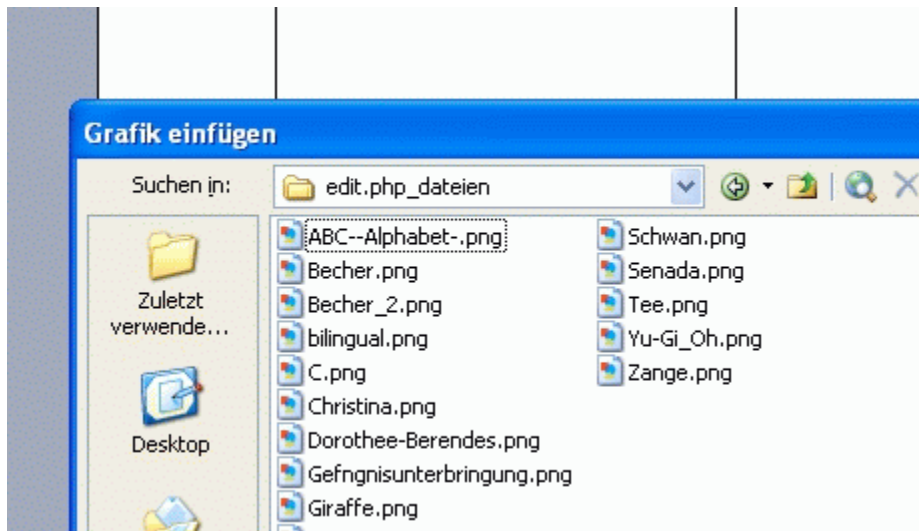
Well - yes that is a wonderful support for different aspects.

I would like to create now a worksheet for my students.

How do I arrange that?

1) Open MS Word and create a table

2) Insert graphics from your folder:



3) In the end you will get your document!


Enjoy – and once more – many thanks to Valerie Sutton and Steve Slevinski!