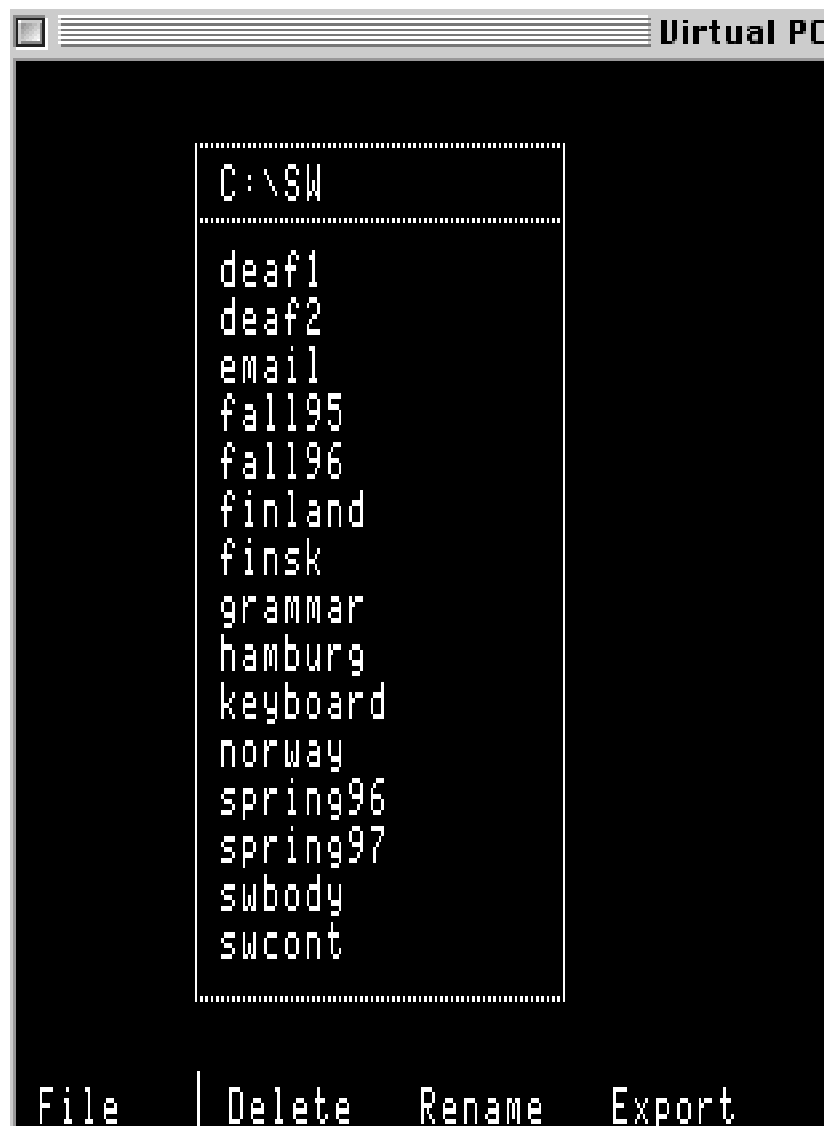
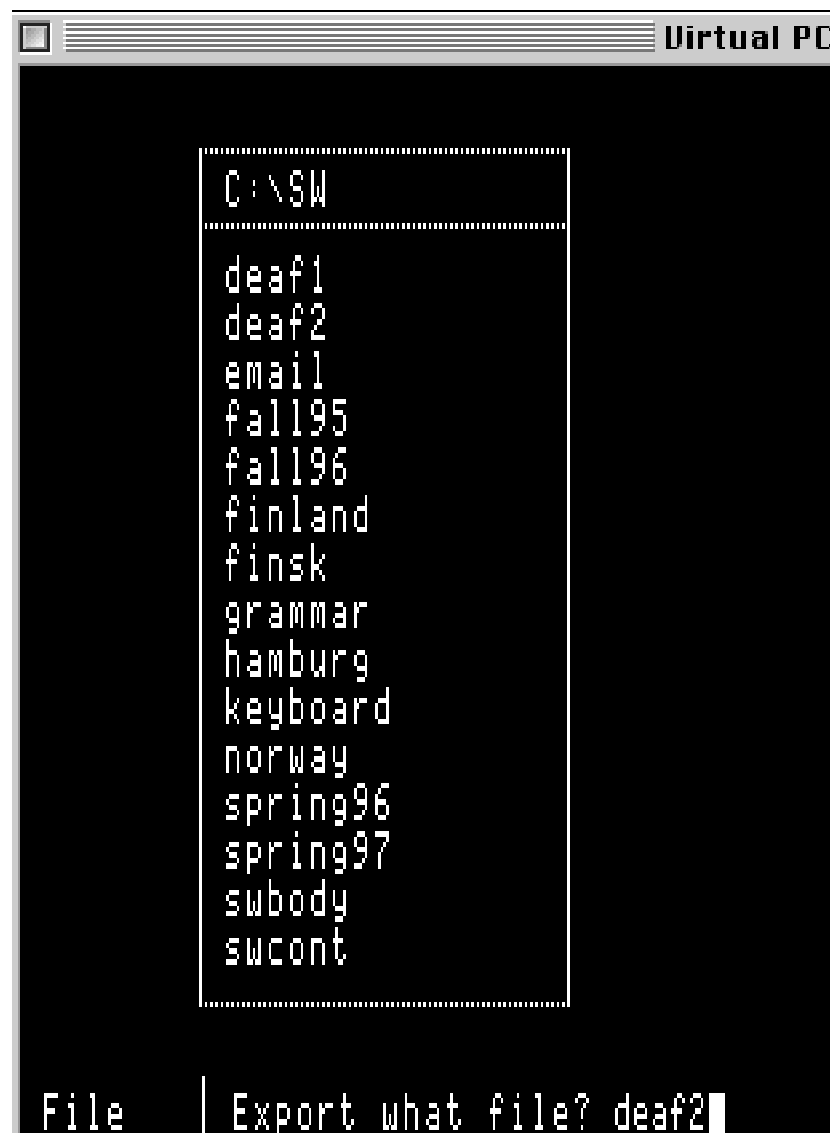


## Pasting SignWriting Diagrams from SignWriter DOS Into Microsoft Word

1. Open SignWriter DOS. Type Alt-F for file:



**2. Type E for Export.** Type the name of the file.  
Press Return or Enter. Then Quit SignWriter:



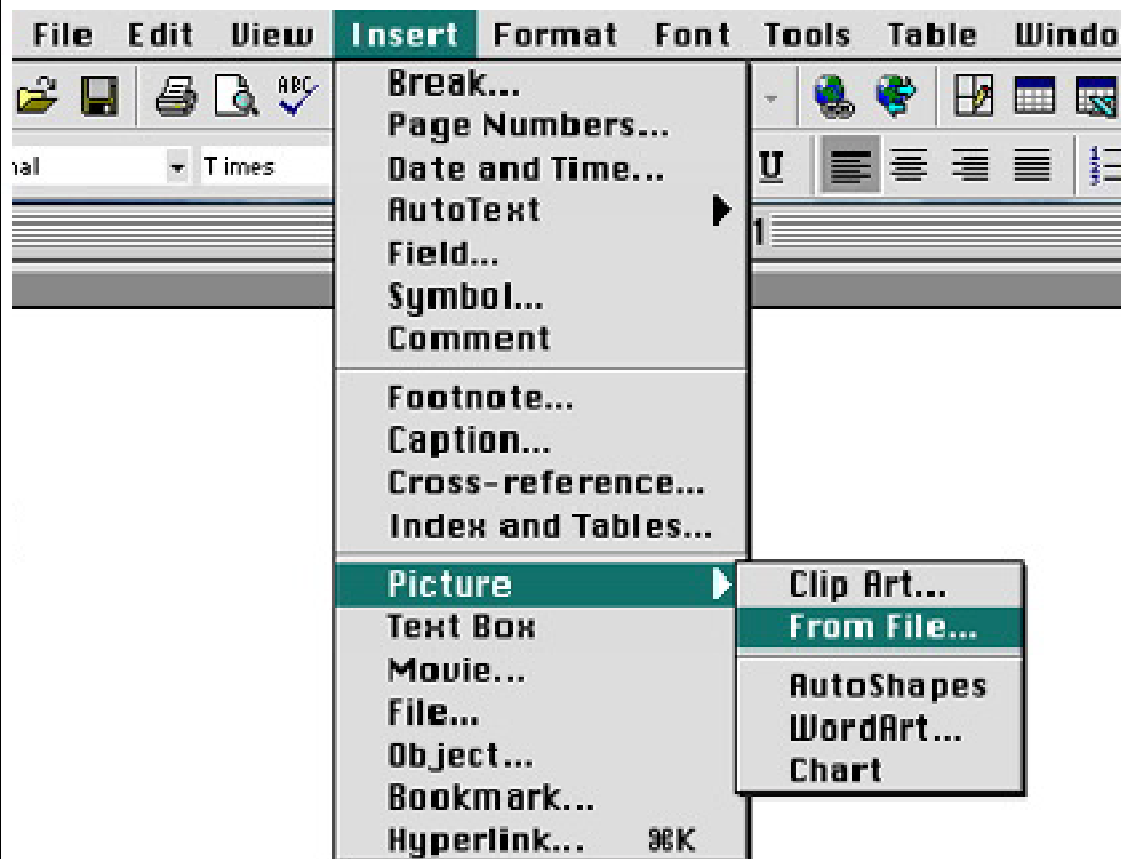
3. **SignWriter will export** the file into a series of bitmap files. You will find the bitmap files listed in MS-DOS. The files end in .BMP:

```
Virtual PC "PC"
SWA4      EXE      99,648 02-17-01  1:48p
SWBODY    SGN      19,968 09-23-00  5:46p
SWCONT    SGN       4,608 09-23-00  5:46p
SWDYNAM   SGN       7,168 09-23-00  5:46p
SWFACE    SGN      12,288 09-23-00  5:46p
SWHANDS1  SGN      21,504 09-23-00  5:46p
SWHANDS2  SGN      12,800 09-23-00  5:46p
SWINFO    TXT       5,774 02-19-01 10:30a
SWINTRO   SGN       6,144 09-23-00  5:46p
SWMOVE1   SGN      15,360 09-23-00  5:46p
SWMOVE2   SGN      22,016 09-23-00  5:46p
SWMOVE3   SGN      18,944 09-23-00  5:46p
SWPUNC    SGN       7,168 09-23-00  5:46p
SWSUOMI   DIC       5,764 06-26-01  3:13p
SWSUOMI   DIN       1,484 06-26-01  3:13p
WELCOME   SGN       2,048 02-19-01  6:36a
DEAF25    BMP       9,888 07-20-02  2:52p
DEAF24    BMP      58,688 07-20-02  2:52p
DEAF23    BMP      58,688 07-20-02  2:52p
DEAF22    BMP      58,688 07-20-02  2:52p
DEAF2     BMP      58,688 07-20-02  2:52p
120 file(s) 1,932,549 bytes
2,081,062,912 bytes free
C:\SW>
```

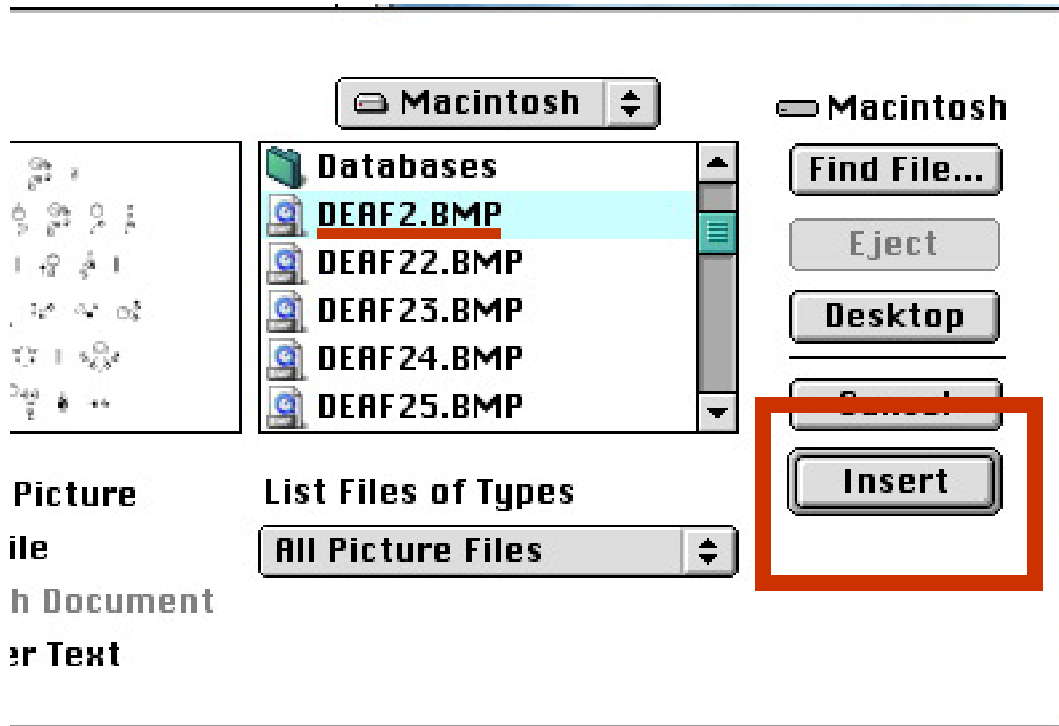
#### 4. Open Microsoft Word:



#### 5. In Microsoft Word, choose **INSERT PICTURE "From File":**



7. Find the name of the file you want to insert, and click the INSERT button:



8. The **SignWriter BMP file** will appear in a graphics box inside MicroSoft Word:

