

“Jack

and

Jill”

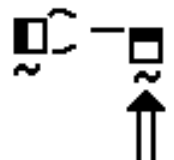
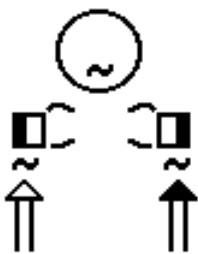
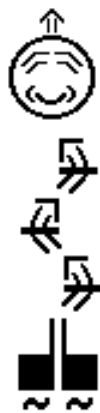
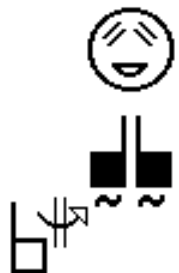
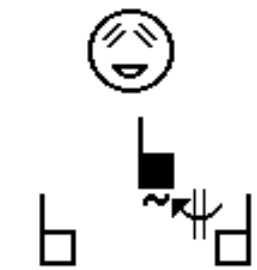


Written in

American Sign Language

by Cherie Wren

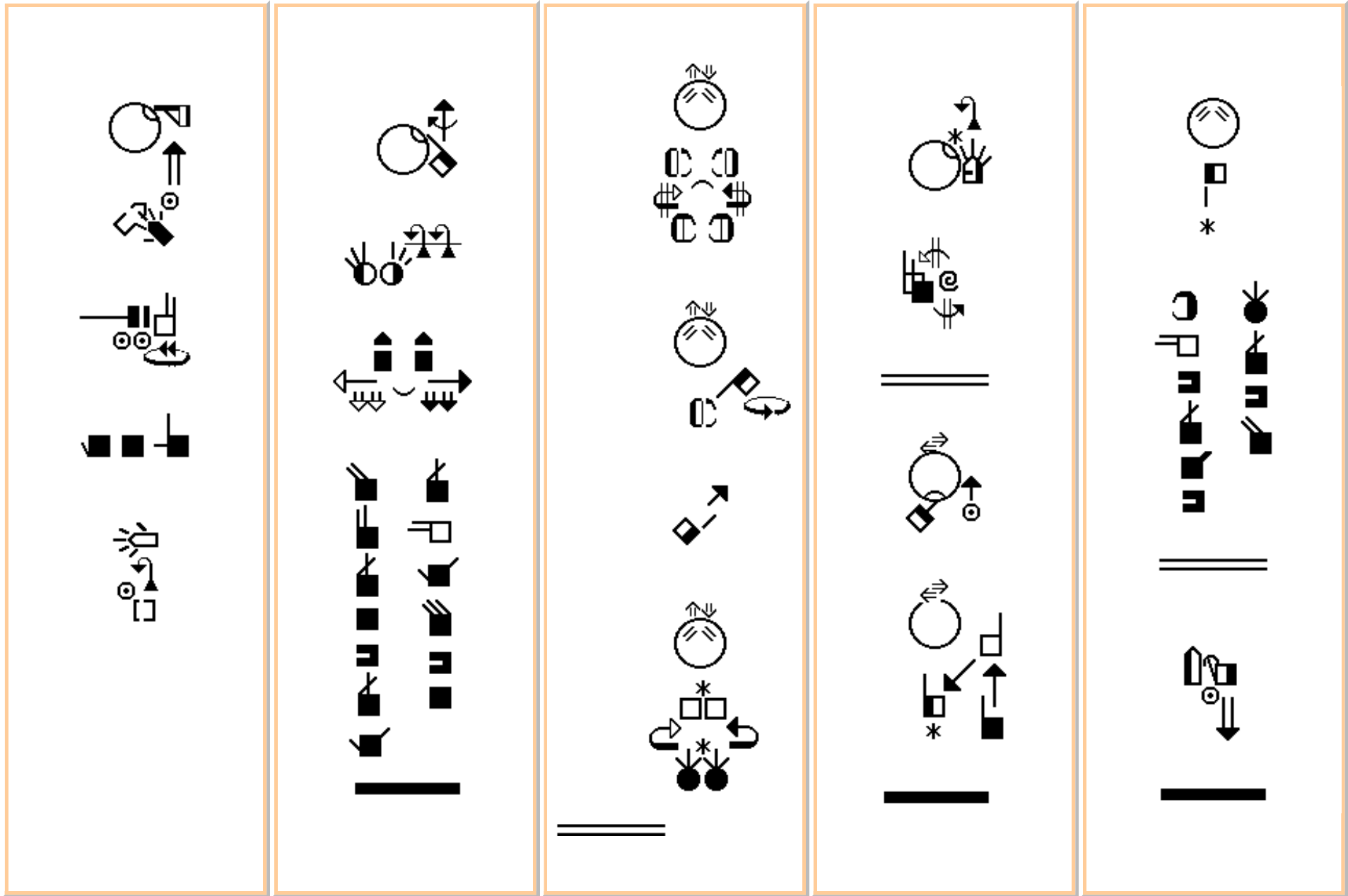
A SignWriting® Children's Story



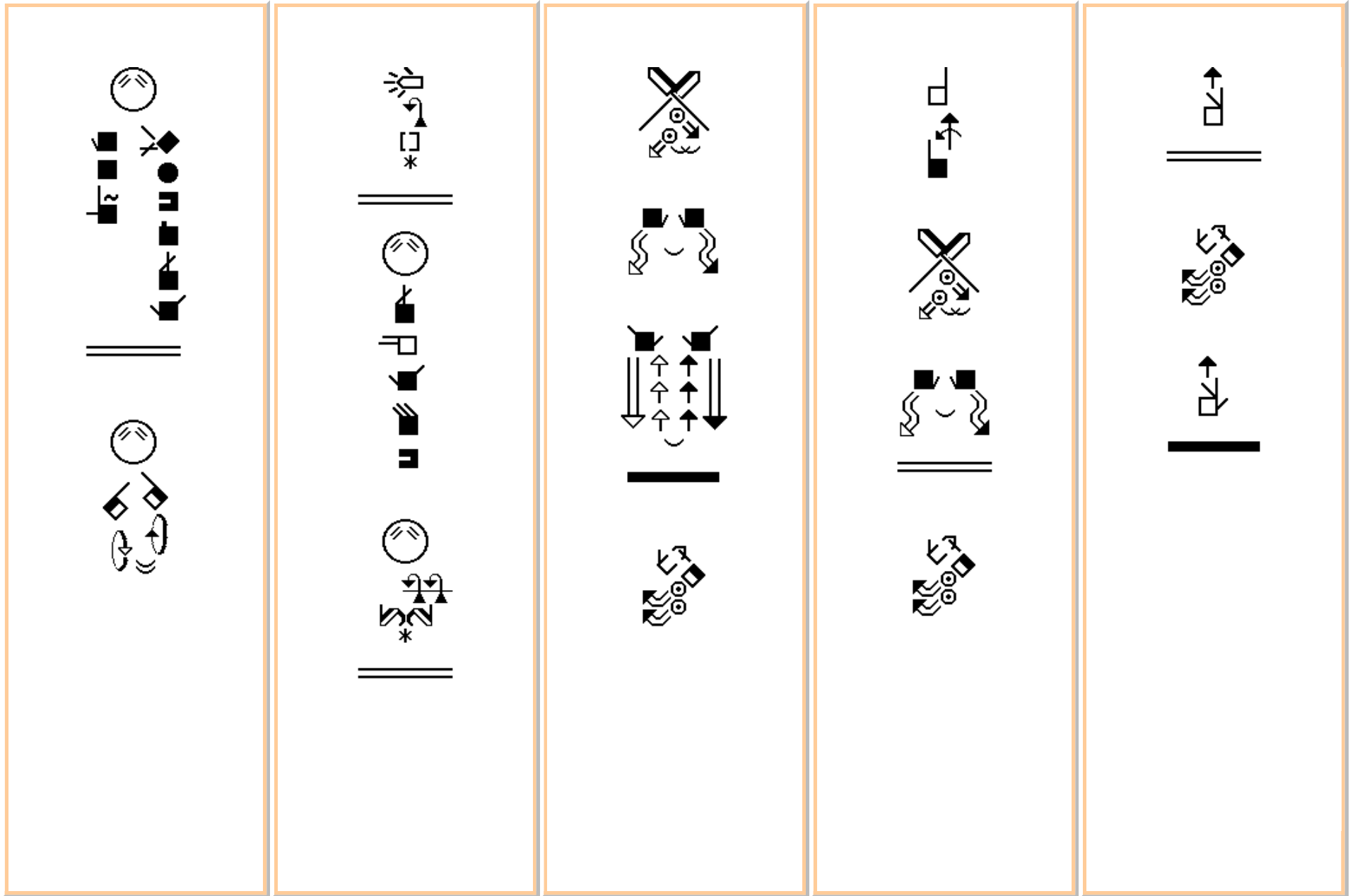
Jack and Jill went the hill
to fetch a pail of water.



**Jack fell down and
broke his crown and
Jill came tumbling after.**



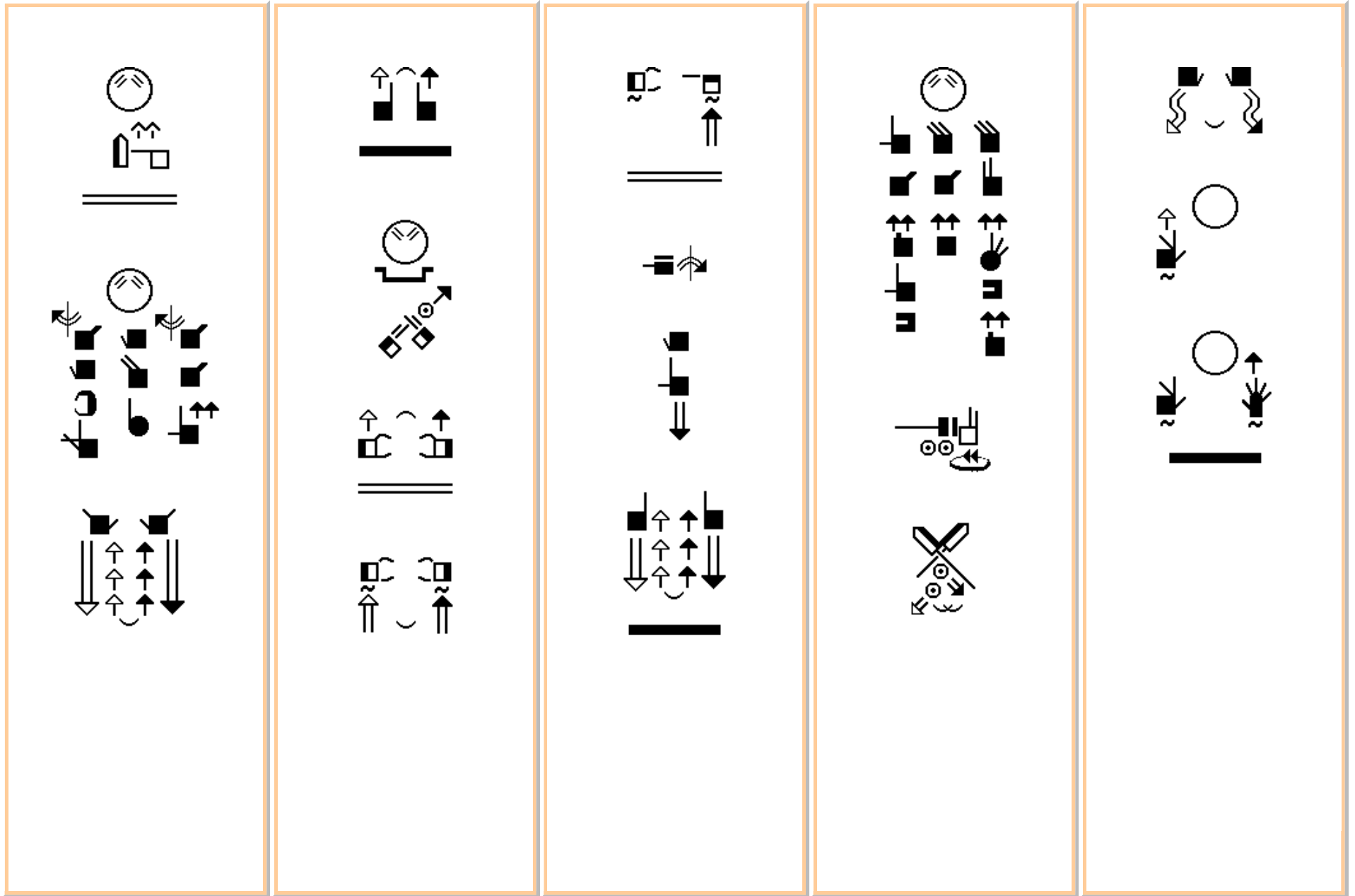
learned to use ASL poetry for interpreting children's nursery rhymes. The workshop participants, as a group, created the translation, and then I, Cherie Wren, wrote the translation in SignWriting.



About ASL Poetry by Cherie Wren



ASL poetry expresses rhyme in Sign Language. How? By using the same handshapes throughout the poem. Sometimes only one handshape is used, sometimes two handshapes, and sometimes three handshapes.



About ASL Poetry continued...



For example, Jack and Jill rhymes by using the Index-Handshape in every sign. There is one exception in the sign for the pail of water, but all other signs use the Index-Handshape throughout. Little Miss Muffet rhymes using the 3-Handshape.