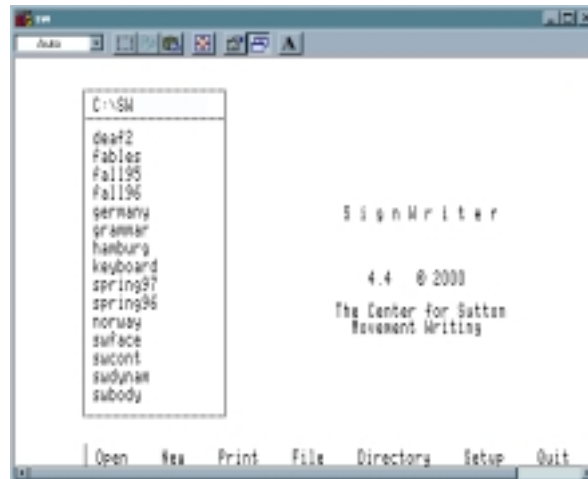




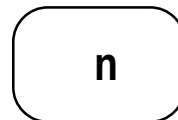
Typing Fingerspelling

In SignWriter 4.4

1. When you first open SignWriter, your screen looks like this:



2. Type **Alt-n** for New:



3. The program will ask you: **Name of new file?**

4. Type the name you want, up to 8 letters or numbers, such as **myfirst** (for "my first file"). Then press **Return**.

blinking
cursor

5. A brand new file opens. You are now looking at a blank file, with a **blinking cursor** in the upper left corner of the screen.



Changing To Fingerspelling Mode

1. There are three typing modes: **Sign**, **Fingerspelling** and **Alphabet**. When a file first opens, it is automatically in Sign mode. To type fingerspelling, you need to switch to **Fingerspelling** mode.

2. To change typing modes, use the **Type** command. Type **Alt-t** for Type. This will appear:


Type | Sign Fingerspell Alphabet

This marks
Fingerspelling
mode



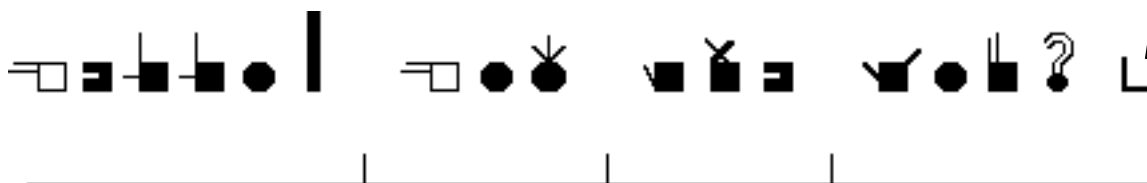
3. Press **f** for fingerspell. The bottom of your screen now looks like this:

Select Copy Erase Find Replace Margin Quit ?

4. Notice the symbol  appears at the bottom left of your screen. This is the fingerspelling symbol for the letter **f**. This tells you that you are now in **Fingerspelling** mode.

5. Now type the English sentence: **Hello. How are you?** Fingerspelling symbols automatically appear:

blinking
cursor



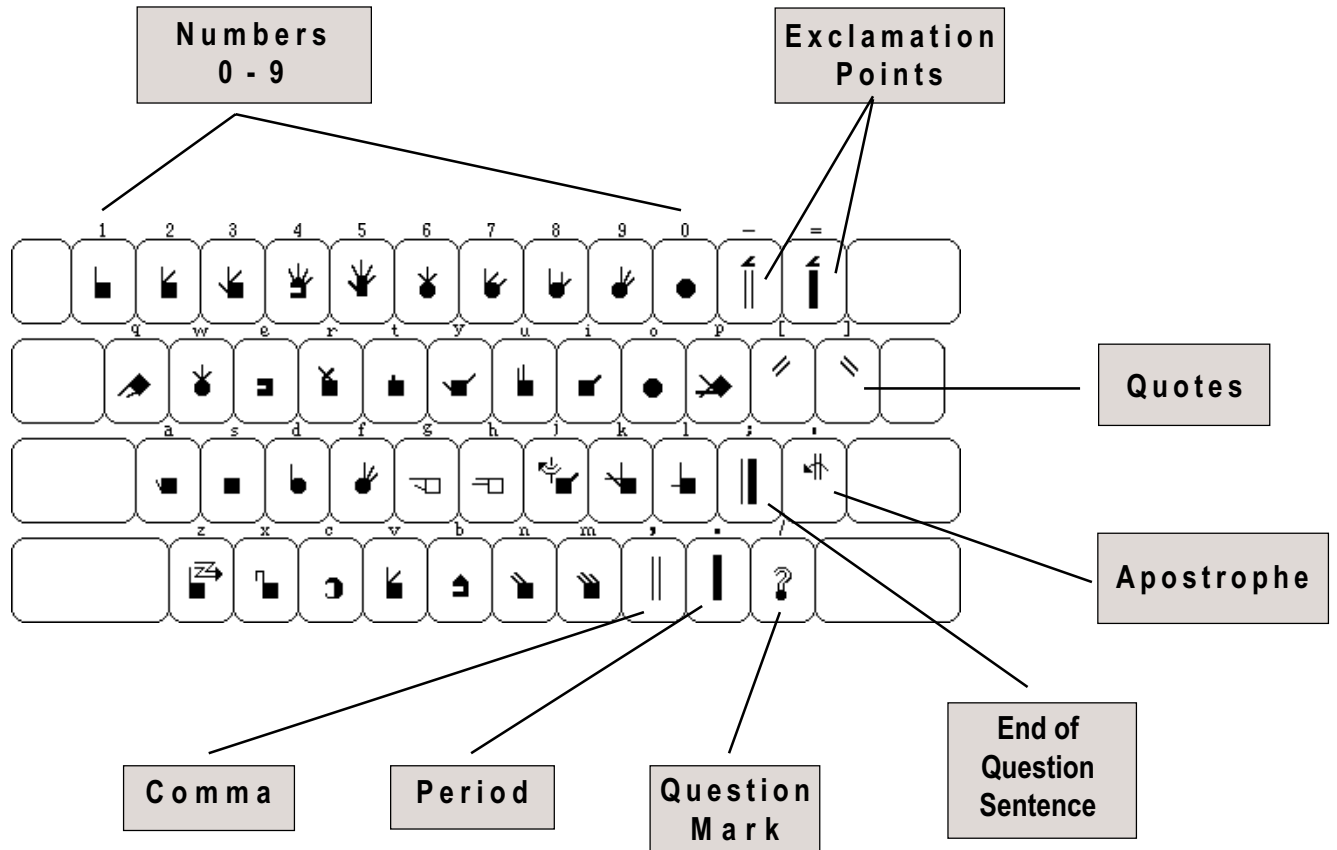
Fingerspelling Keyboards

Fingerspelling is different in every country. The SignWriter Computer Program supports seventeen signed languages and ten spoken languages. There are seventeen different Fingerspelling Keyboards in SignWriter!

If you own the complete SignWriter program, then you have all seventeen countries on your hard disk, in your SW directory. You can change to different keyboards.

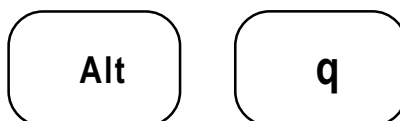
If you downloaded SignWriter Shareware, then you have one country alone. Below is the American Fingerspelling Keyboard for the USA and English-speaking Canada.

Fingerspelling, USA



Saving A File

1. To save a file, you must first leave the file. To do this, use the **Quit** command. Type **Alt-q** for Quit:

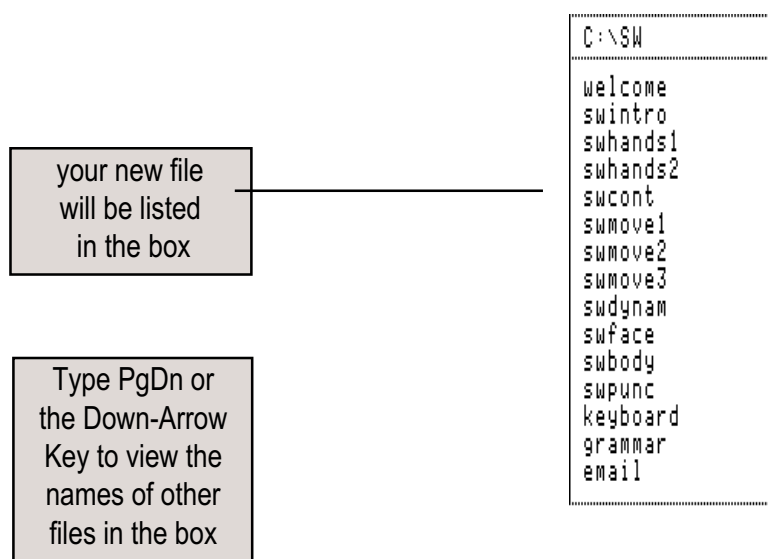


2. This appears on your screen:

Quit | Save Write Backup Exit

3. To save the file, type **s** for Save.

4. You are now back at the file box:



```
C:\SW
welcome
swintro
swhands1
swhands2
swcont
swmove1
swmove2
swmove3
swdynam
surface
subody
swpunc
keyboard
grammar
email
```

your new file will be listed in the box

Type PgDn or the Down-Arrow Key to view the names of other files in the box

5. Once you have saved your file, you will find the file's name listed in the file box on the screen (see above). The file box lists all of the SGN files in your SW directory. Type PgDn, or the Down-Arrow key, to view the names of other files available to you.

SignWritingSite:

<http://www.SignWriting.org>