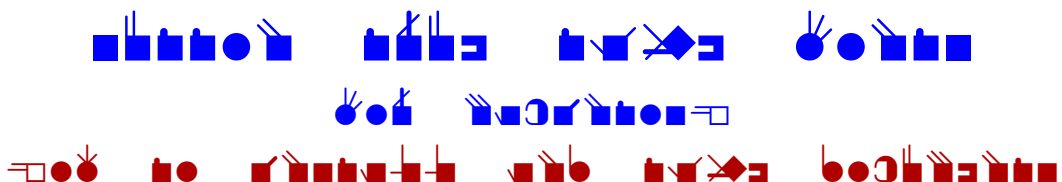


**Sutton True Type Fonts**  
**For Macintosh**  
How To Install and Type Documents



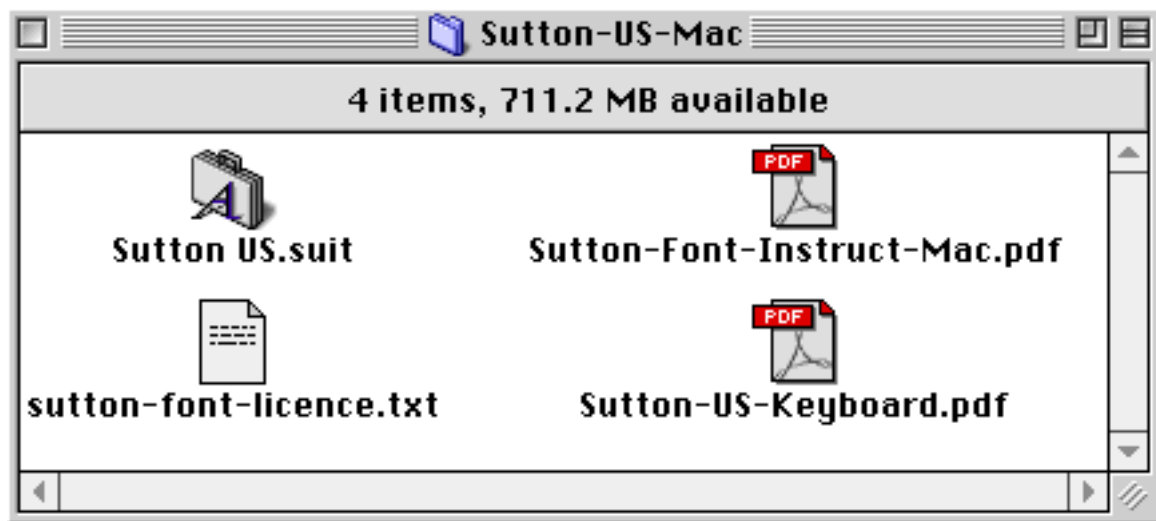
# Sutton True Type Fonts

## How To Install in Windows

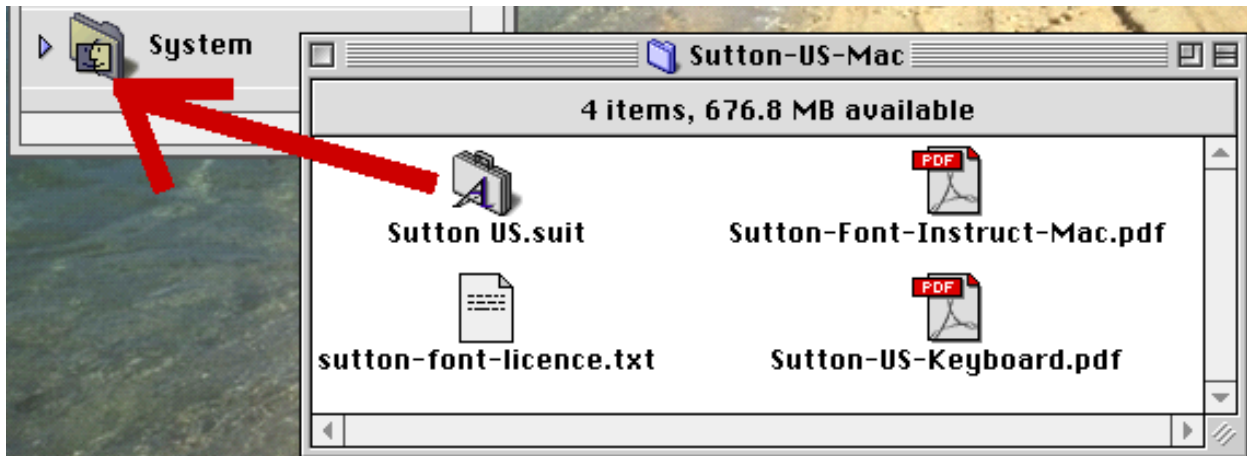
1. Download the Sutton Font on the web:  
<http://www.SignWriting.org/catalog/sw214.html>



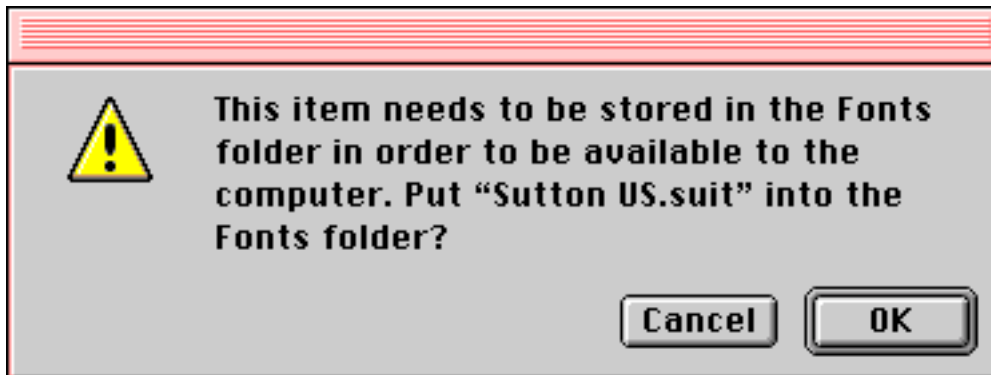
2. Once downloaded, you will need to "de-compress" the file.  
Once the file is "de-compressed", you will have these four files:



3. Drag the Font Suitcase on top of the System Folder.



4. This message will appear:

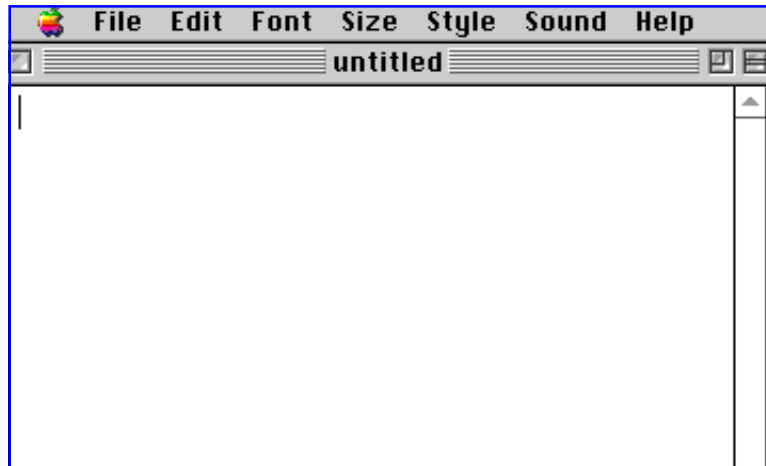


5. Click OK. Then restart your Macintosh.  
The font is now installed.

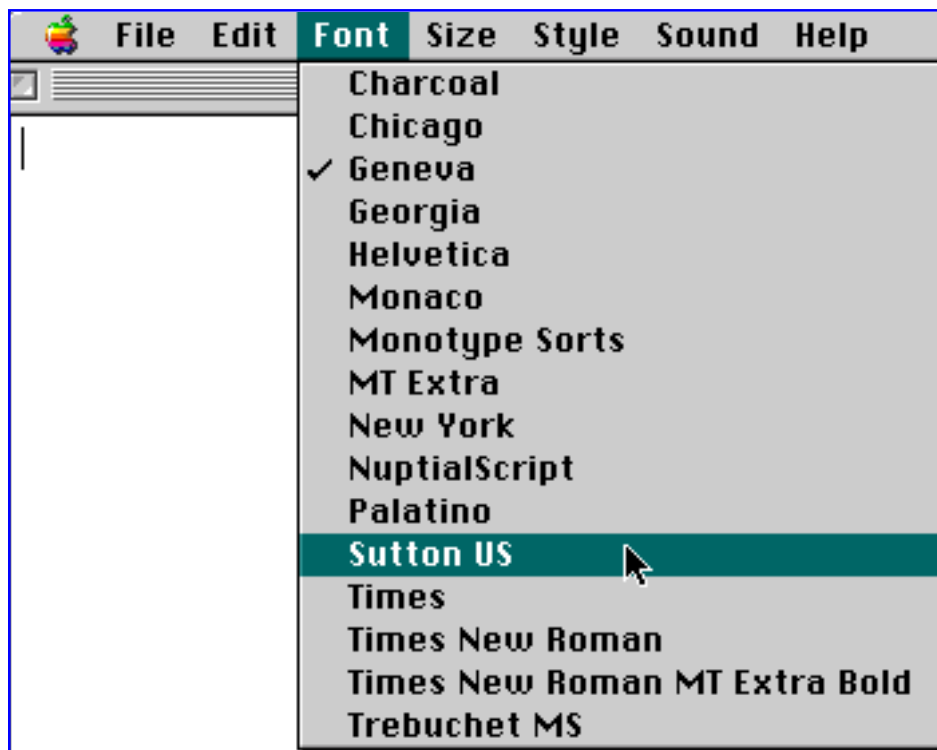
# Sutton True Type Fonts

## Typing Fingerspelling on the Macintosh

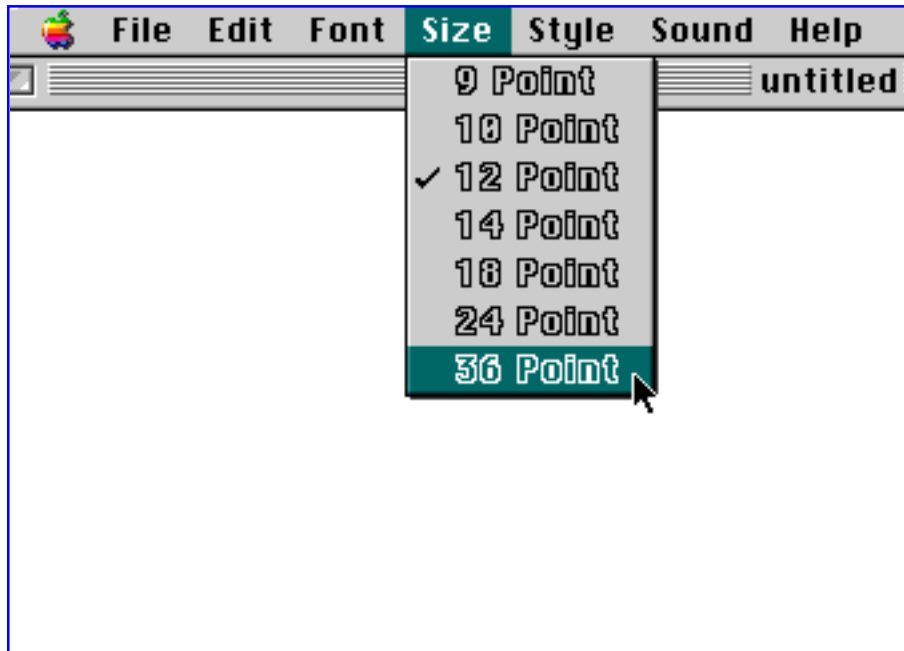
1. Open a word processing program:



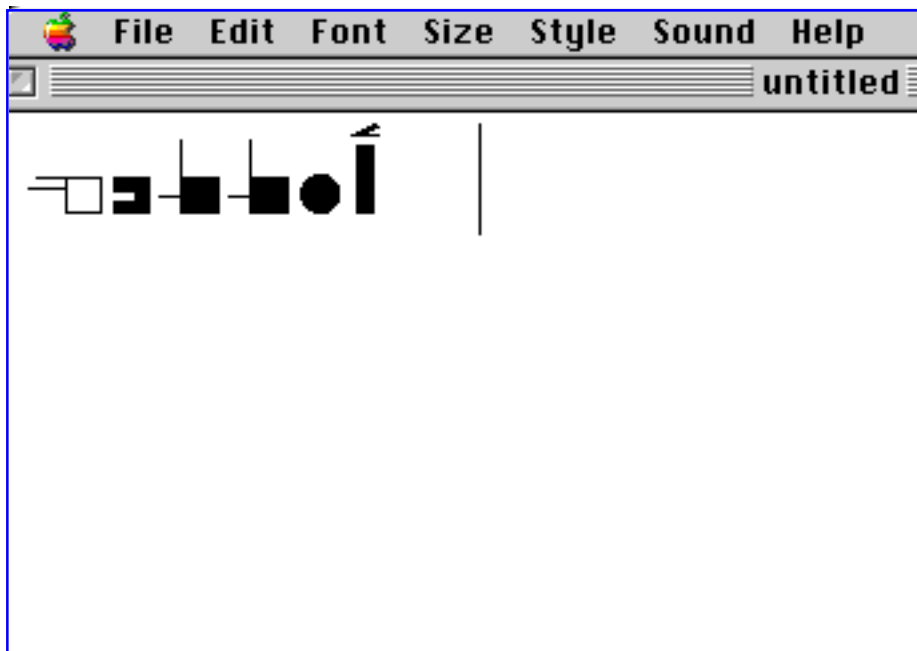
2. Place your cursor in the text area of your document.  
Then choose the "Sutton Font" from the long list of Fonts...



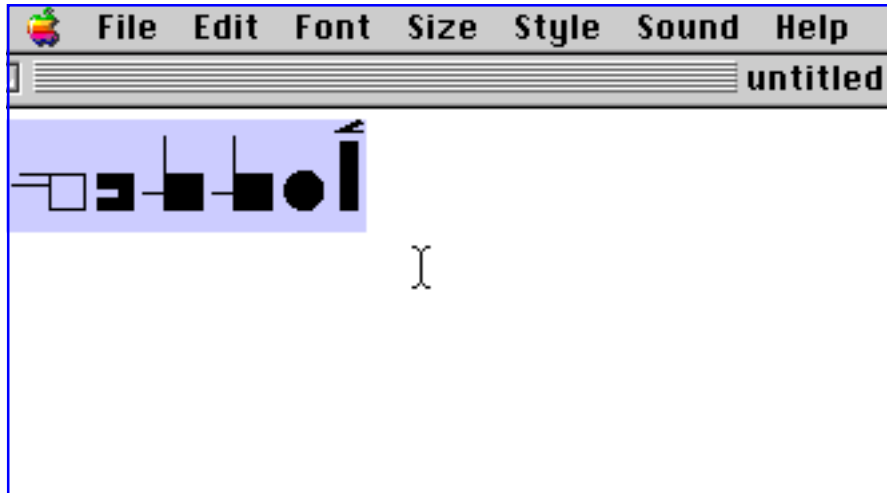
3. Choose the size...



4. Start typing. The SignWriting symbols will appear on the screen:

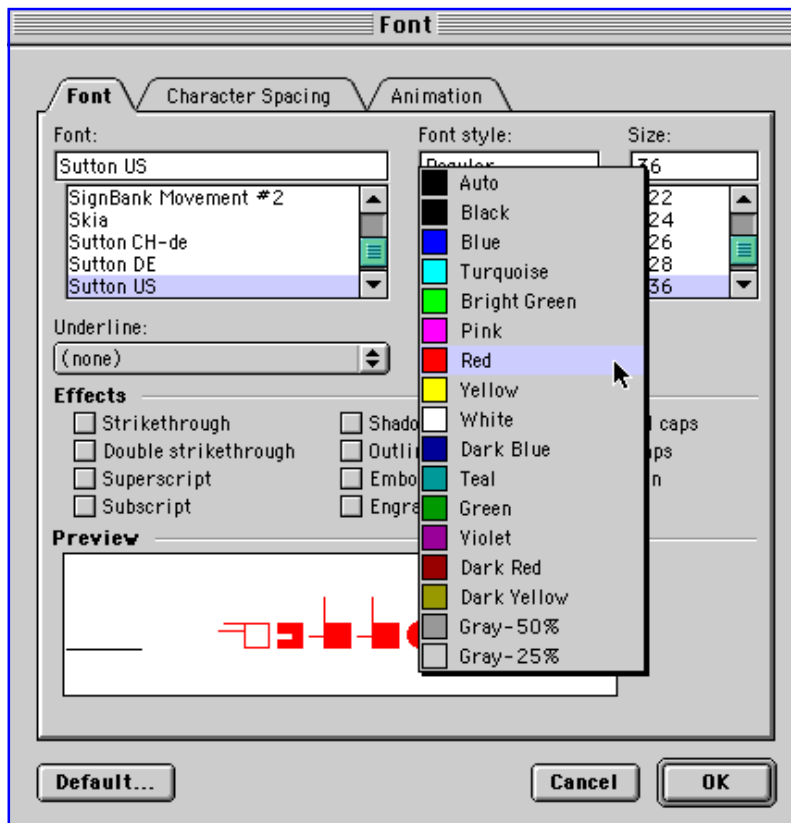


5. Want to change the color? Select the type with your mouse:

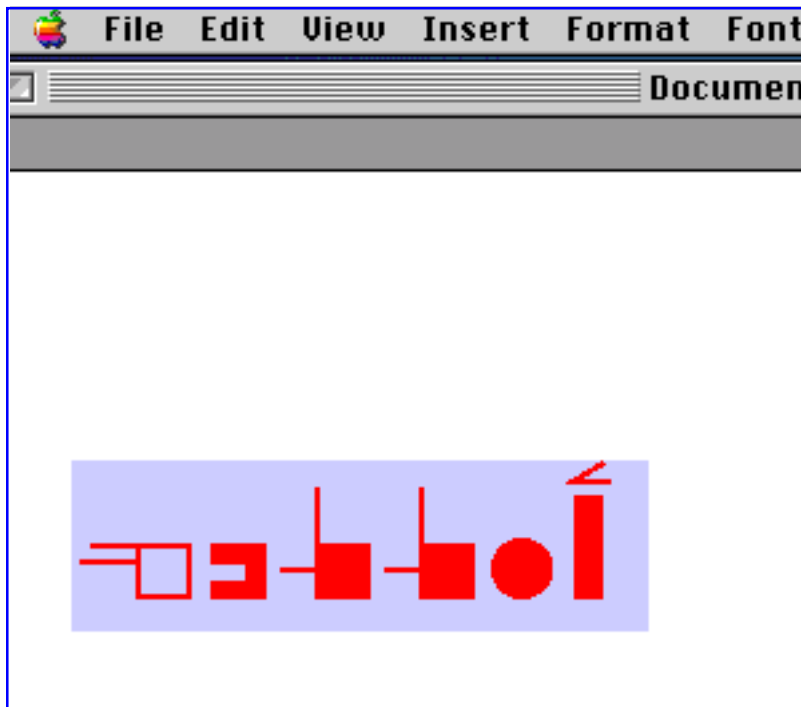


6. Then under Fonts, change the color.

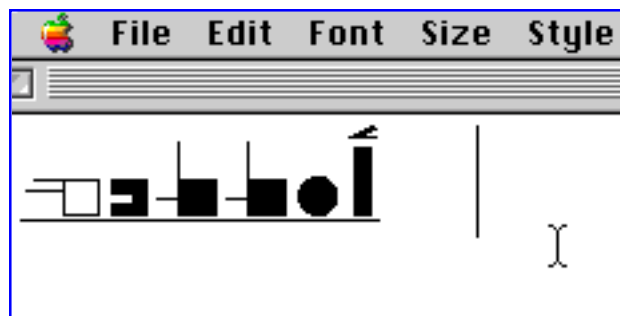
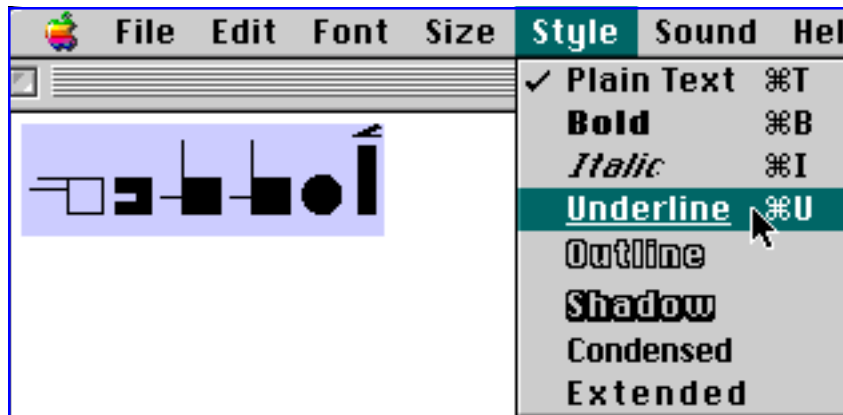
(Note: The diagram below shows changing color in MicroSoft Word on the Mac. Other words processors may look different, but they all have a choice of color.)



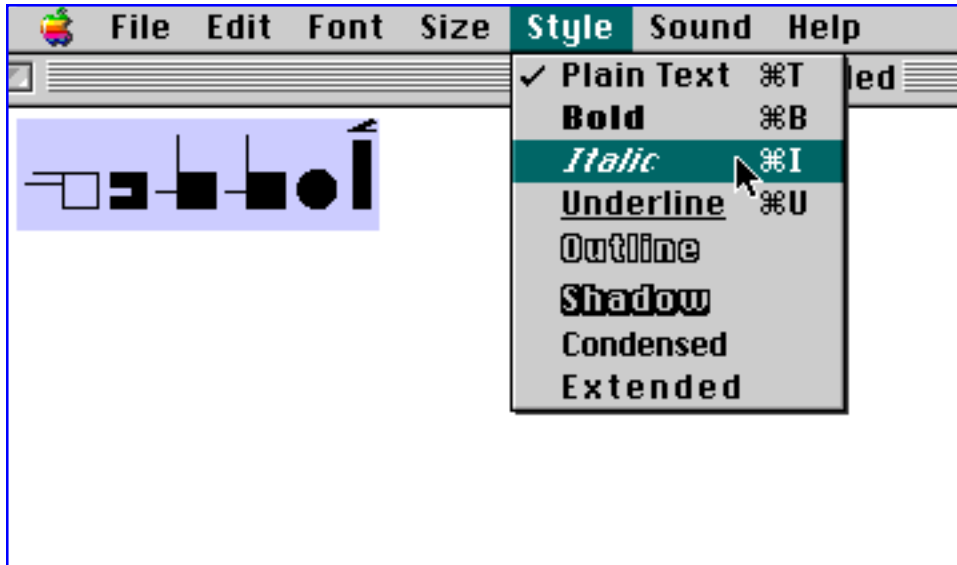
7. The fingerspelling symbols change color:



8. You can choose underlining your type:



9. Or you can choose italics:



10. And presto! The SignWriting symbols are on a slant....





## Sutton True Type Fonts

### Converting Words in a Text To Fingerspelling

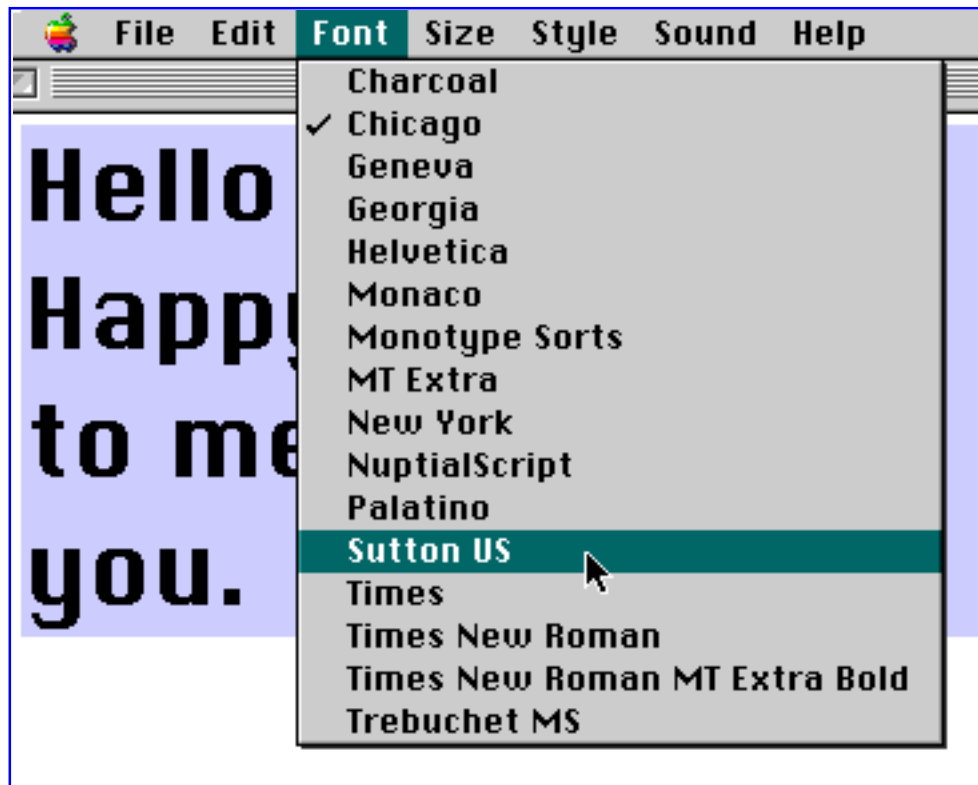
1. Open a word processing program. Type words using another font:



2. Select the text with your mouse:



3. Under Fonts, choose the Sutton Fingerspelling Font:



4. The text converts to SignWriting symbols:

