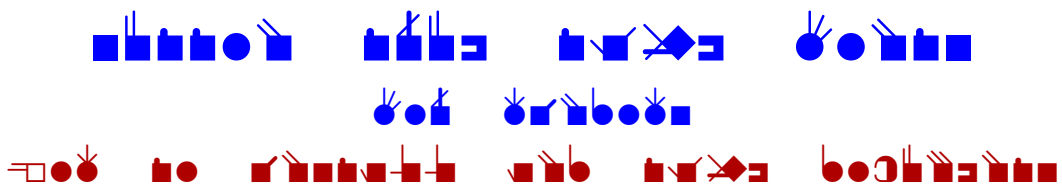


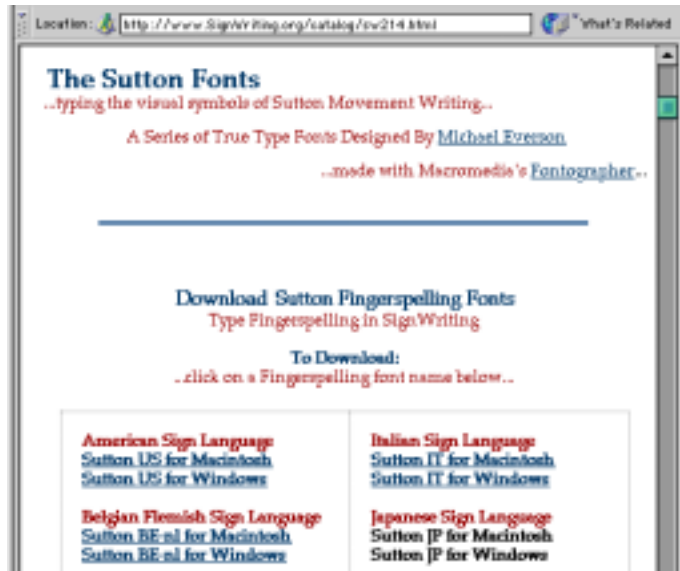
Sutton True Type Fonts
For Windows
How To Install and Type Documents



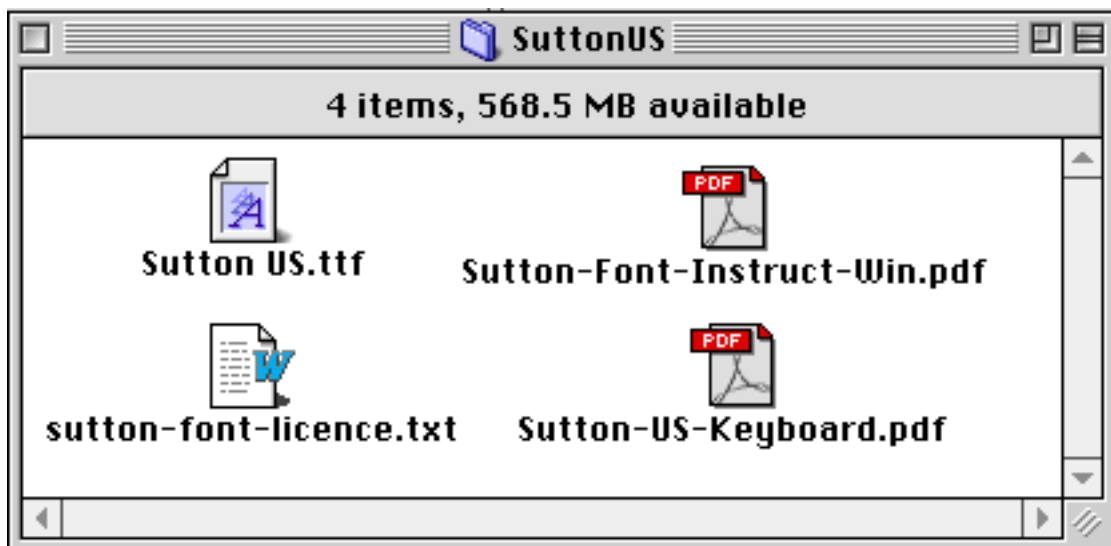
Sutton True Type Fonts

How To Install in Windows

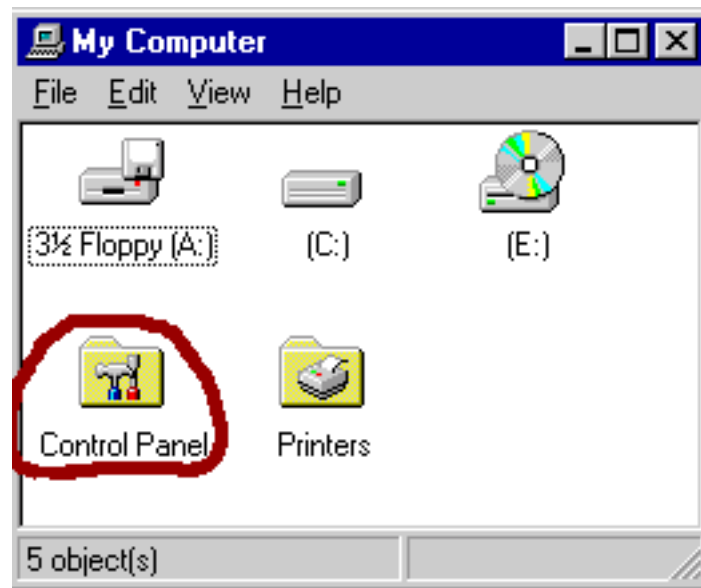
1. Download the Sutton Font on the web:
<http://www.SignWriting.org/catalog/sw214.html>



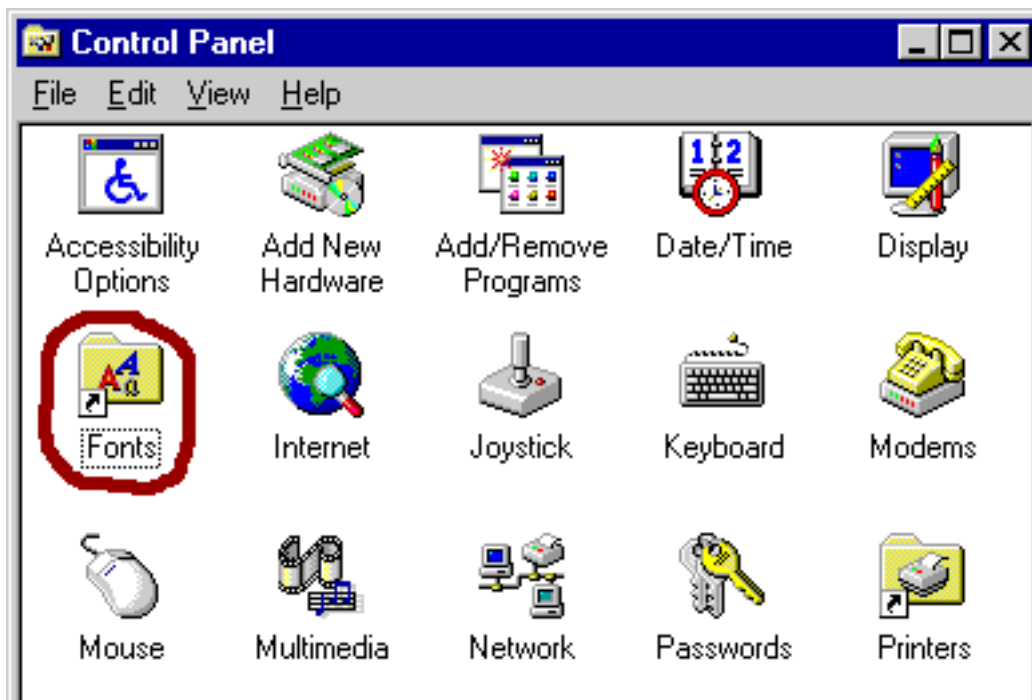
2. Once downloaded, you will need to "de-compress" the file. Once the file is "de-compressed", you will have these four files:



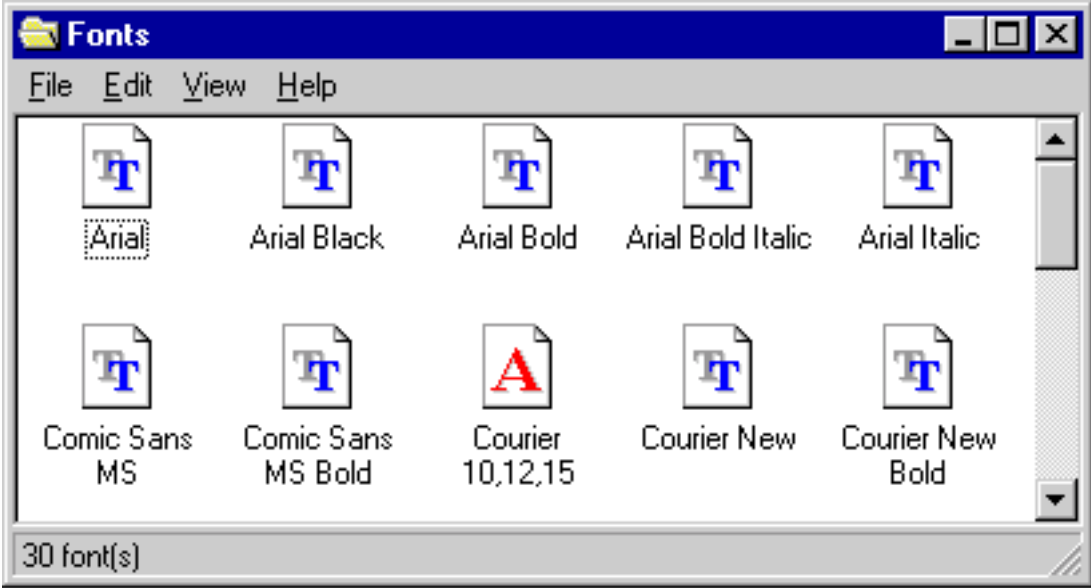
3. Open the Control Panel.



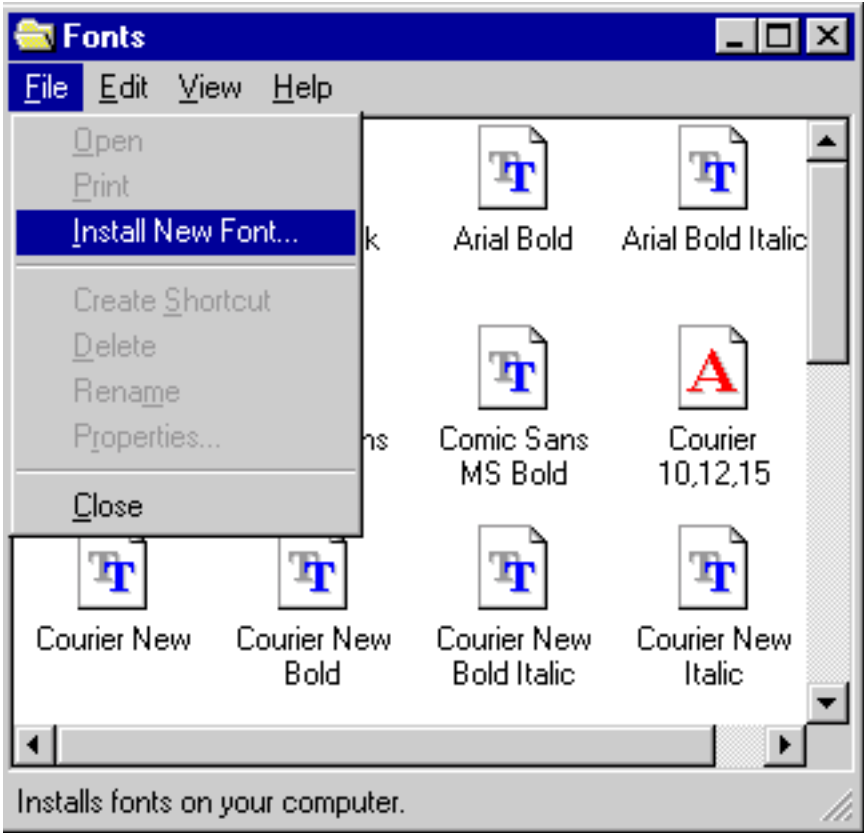
4. Open the Fonts folder.



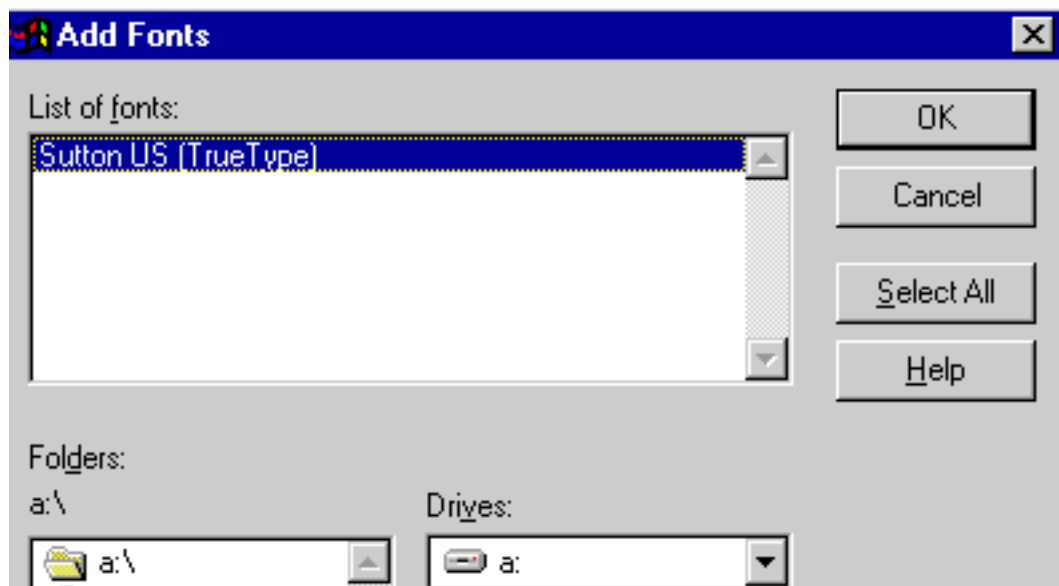
5. The Fonts folder opens showing fonts that are already installed:



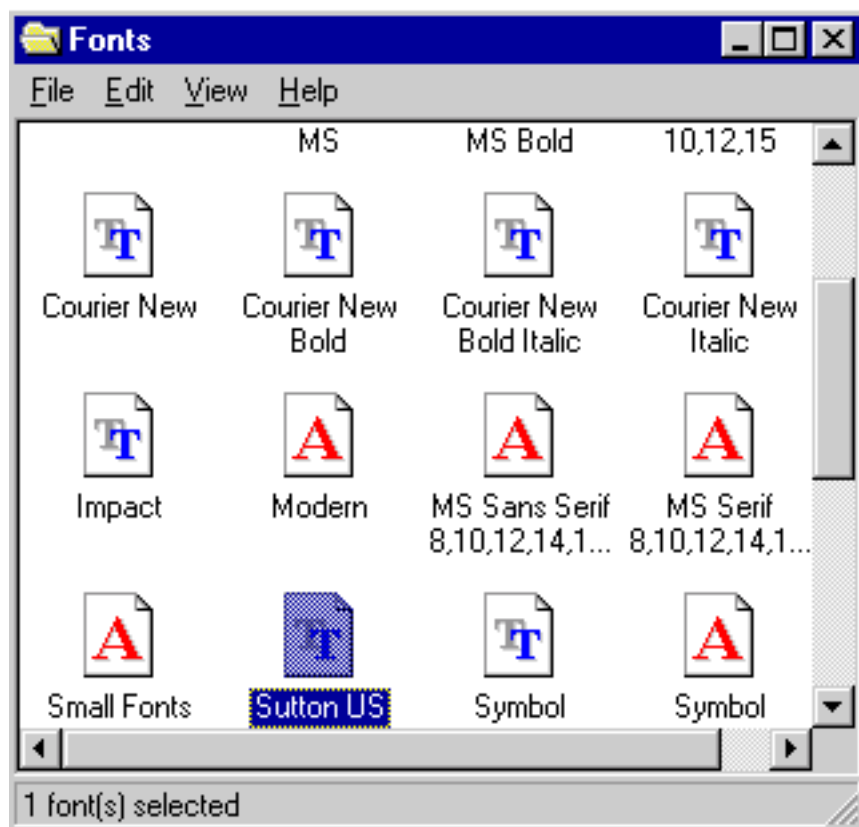
6. Under File, choose "Install Fonts".



7. Find the name of the Sutton Font and select it. Click OK.



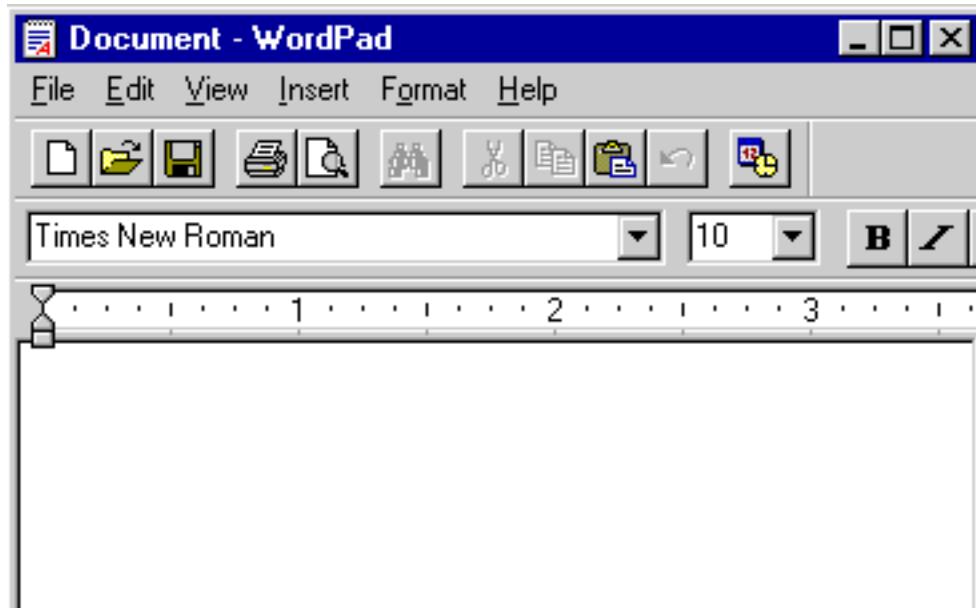
8. The Sutton Font is now in the Fonts folder.



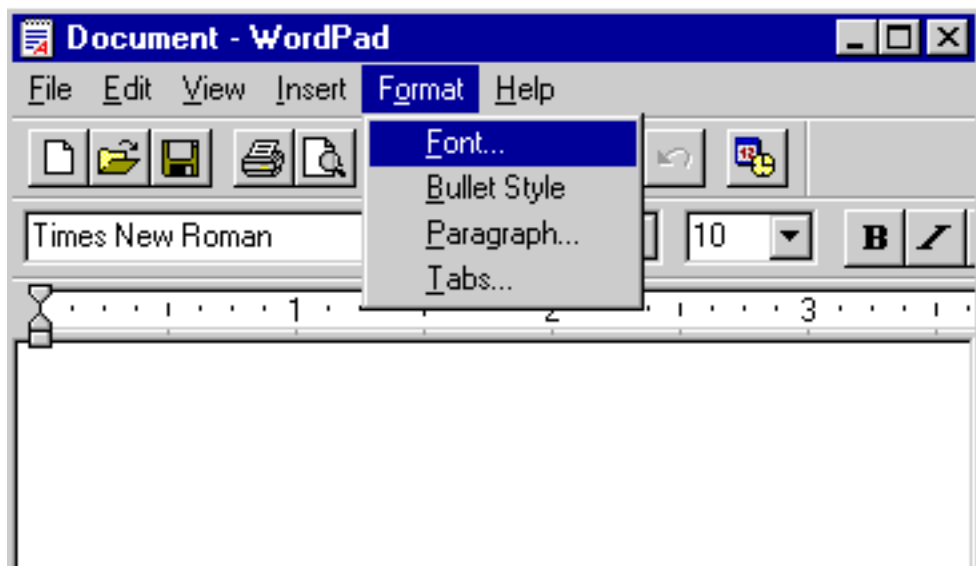
Sutton True Type Fonts

How To Type Documents in Windows

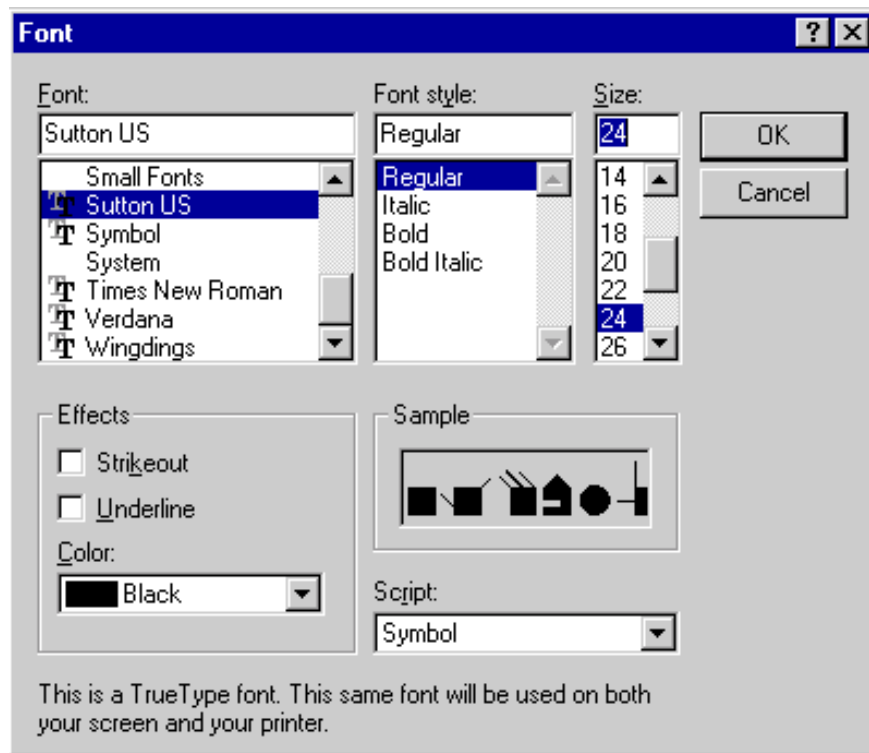
1. Open a word processing program:



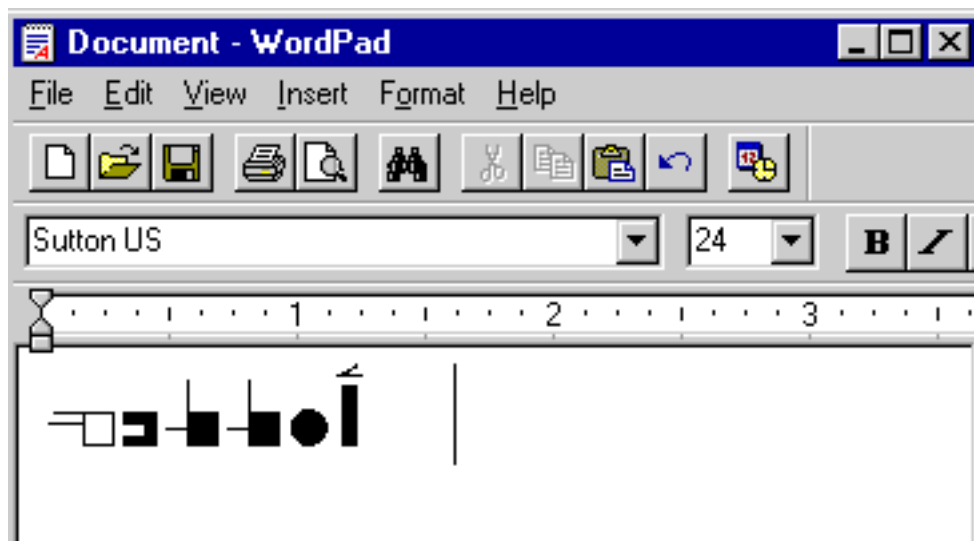
2. Choose "Font".



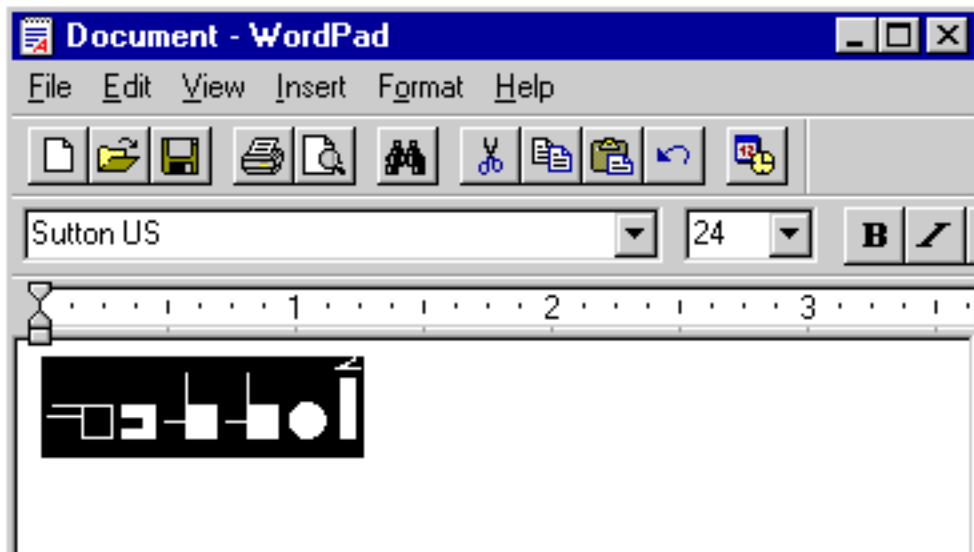
3. Choose the name of the font, and also the size. Click OK.



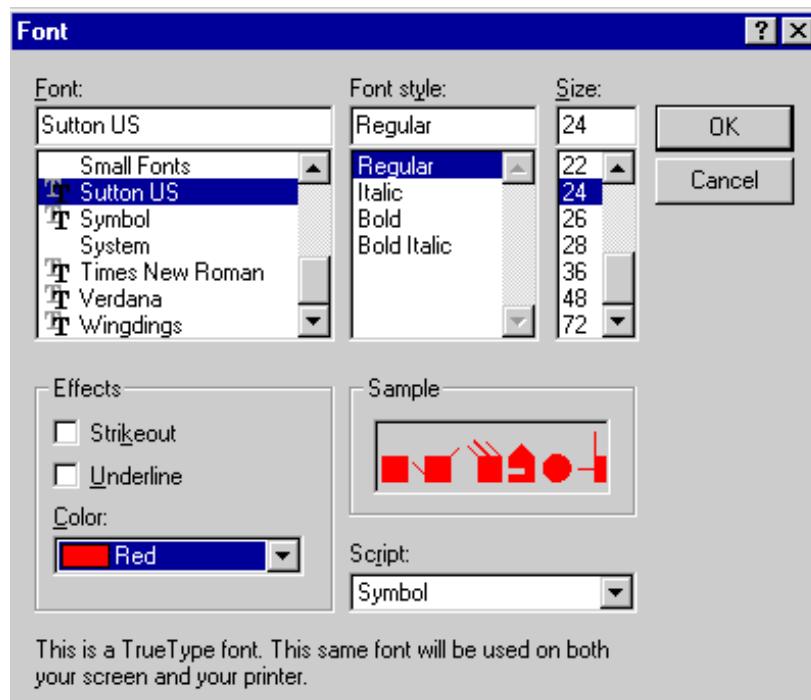
4. Place your cursor in the text area and start typing.
The SignWriting symbols will appear on the screen:



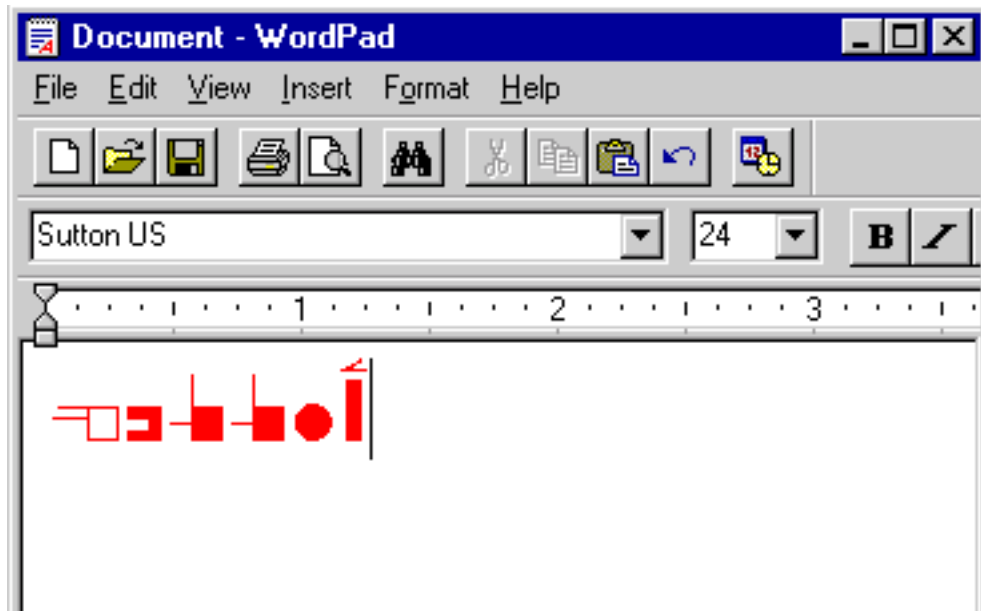
5. Want to change the color? Select the type with your mouse:



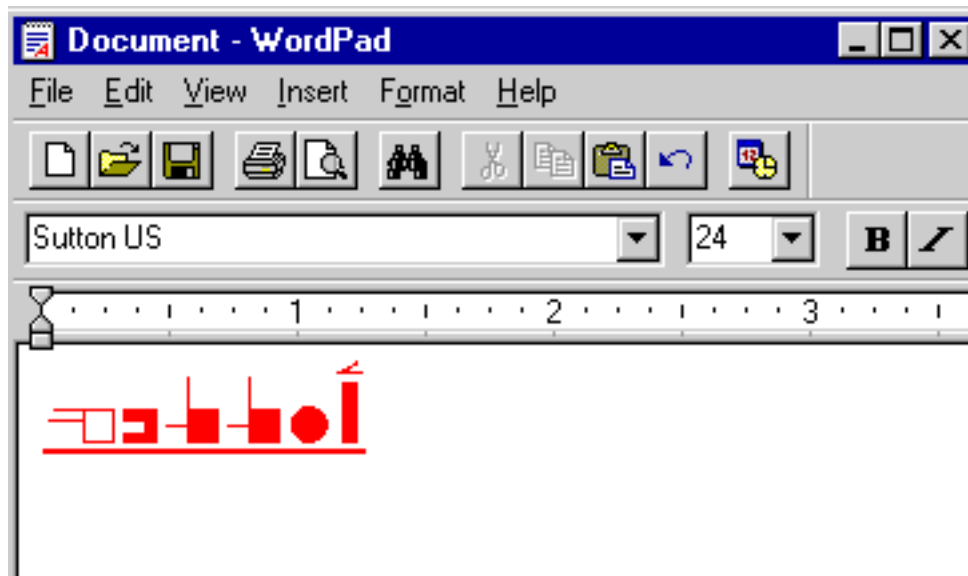
6. Then under Fonts, change the color:



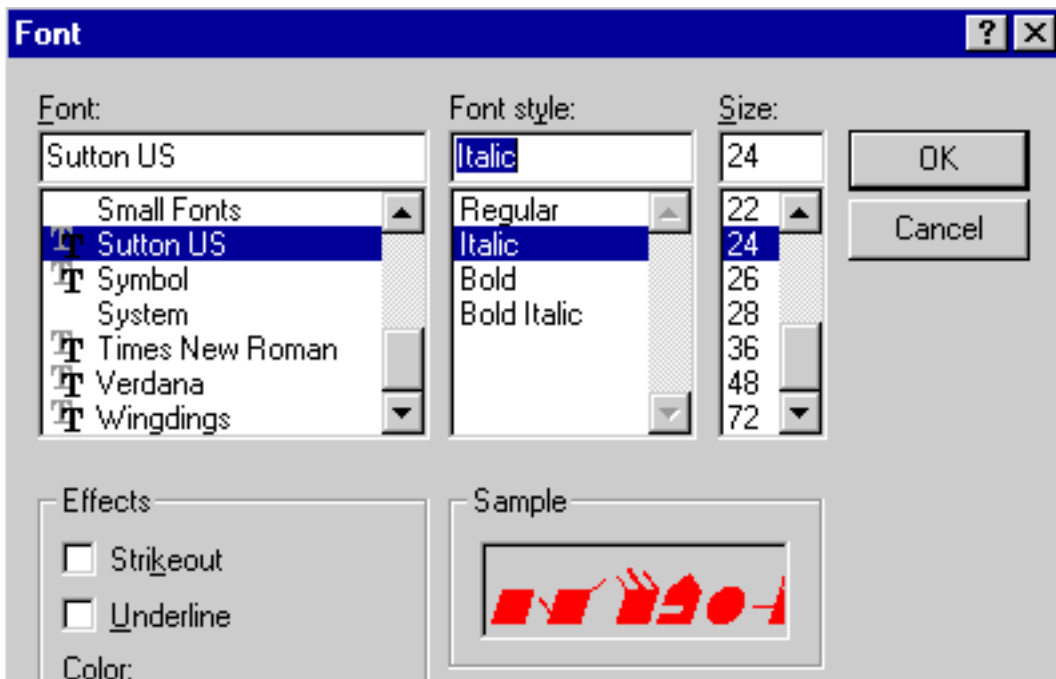
7. The fingerspelling symbols change color:



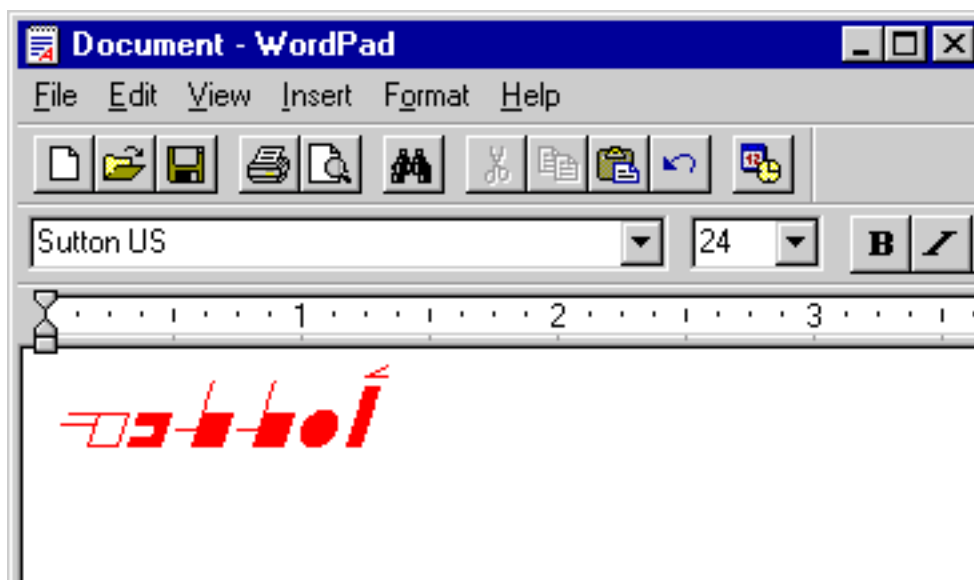
8. You can choose underlining your type:



9. Or you can choose italics:



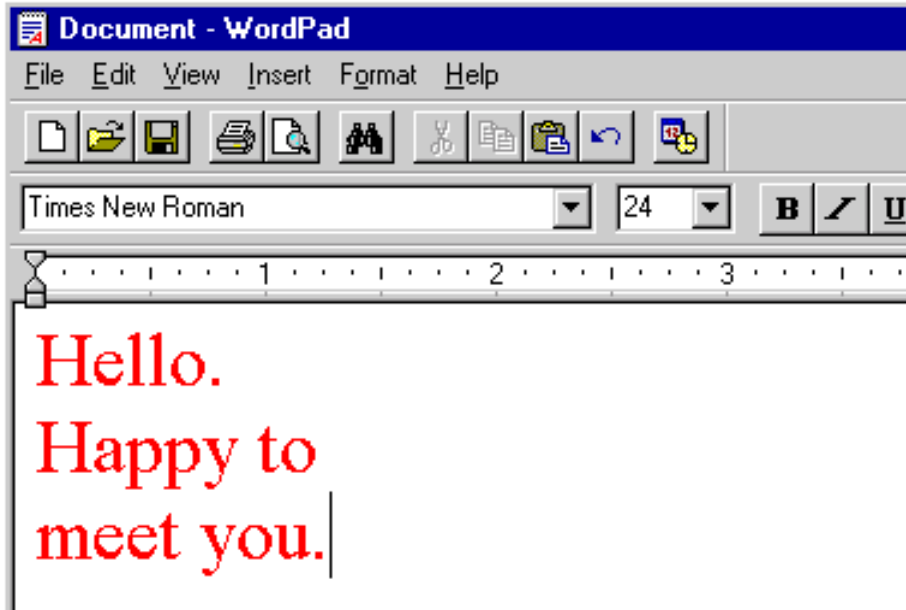
10. And presto! The SignWriting symbols are on a slant....



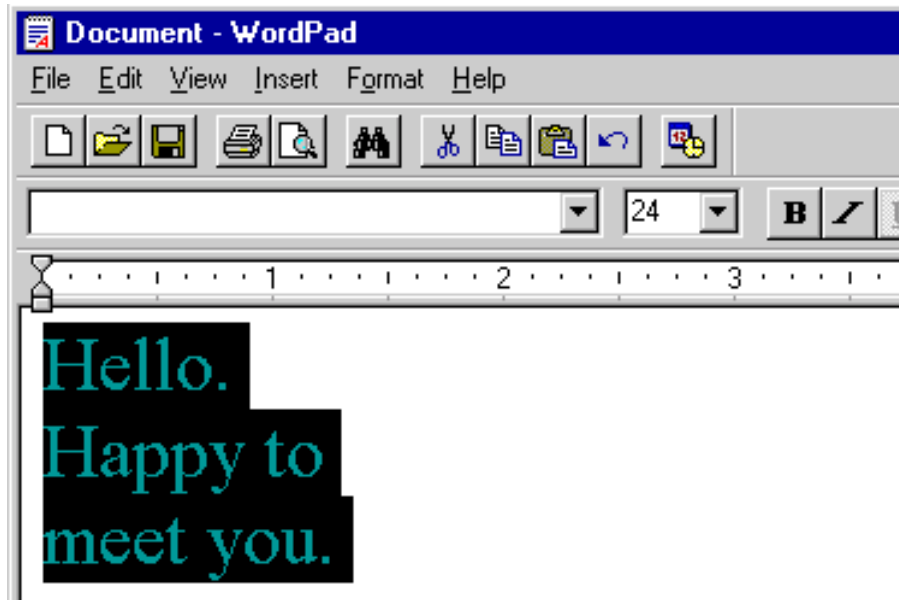
Sutton True Type Fonts

Converting Words in a Text To Fingerspelling

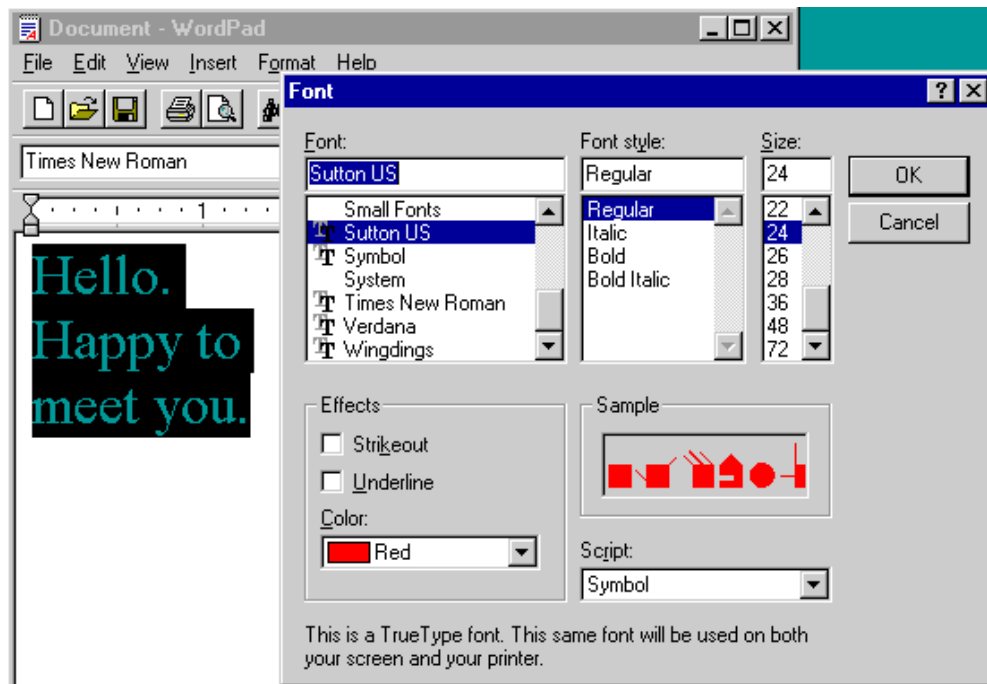
1. Open a word processing program. Type words using another font:



2. Select the text with your mouse:



3. Under Fonts, choose the Sutton Fingerspelling Font:



4. The text converts to SignWriting symbols:

