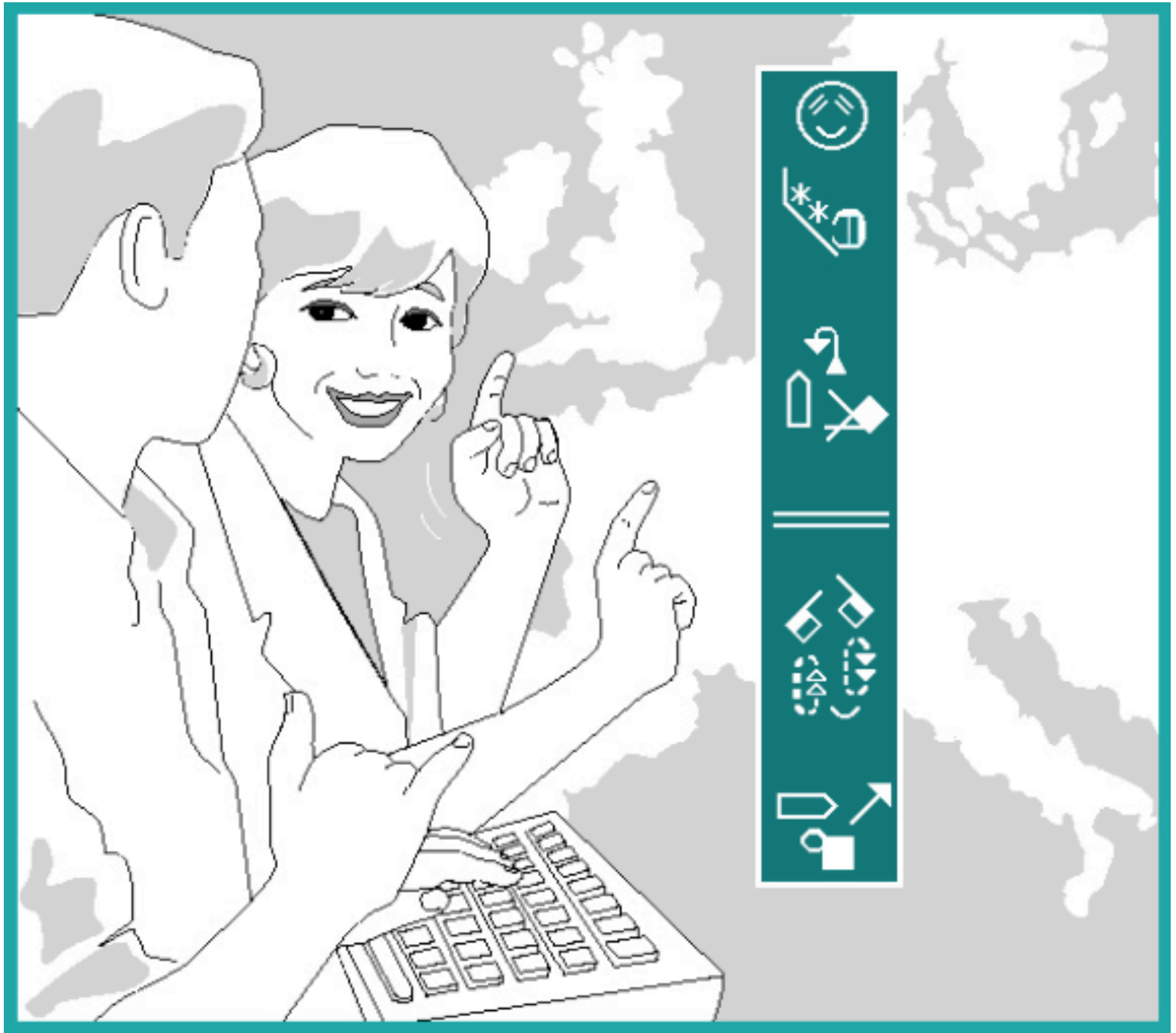


1. **SPLASH SCREEN** This should appear when the program starts up...

(The artwork can be downloaded at: <http://signwriting.org/forums/software/sw50>)...

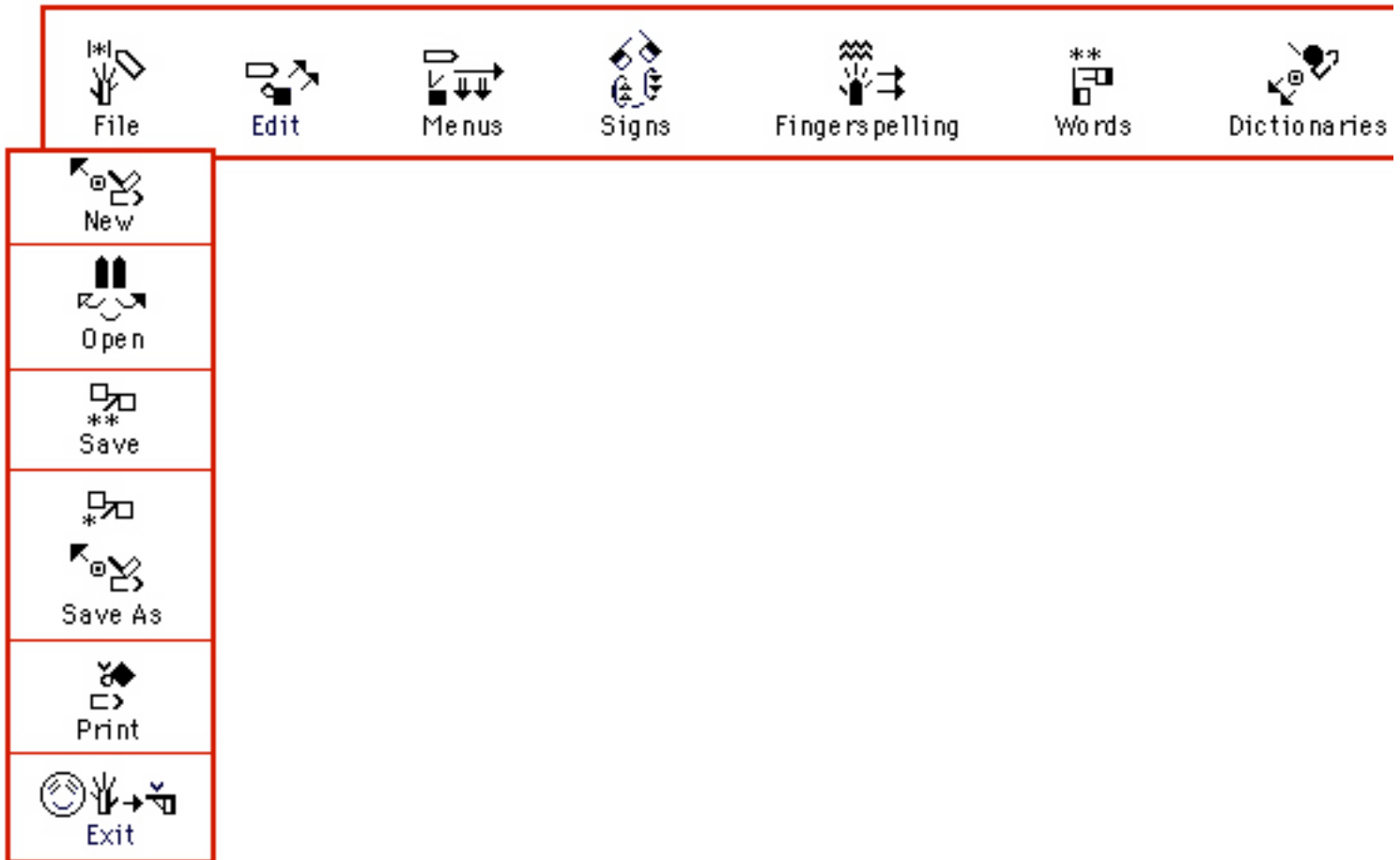


SignWriter®
Sign Language Processor

Type the world's signed languages in the visual symbols of SignWriting®

2. FILE MENU

Commands available: New, Open, Save, Save As, Print, Exit.
The commands New, Open, Save and Exit work right now.



Programming Tasks Save As and Print Commands

Save As

The command “Save As” should work like an Export Command, where you can “Save as a SGN File“ (a SignWriter file), or “Save As a JPEG”, “Save As TIF”, and hopefully save as a GIF and as a Text File someday... Within the “Save As” command, it should also give choices as to “where to save the file”.

Print

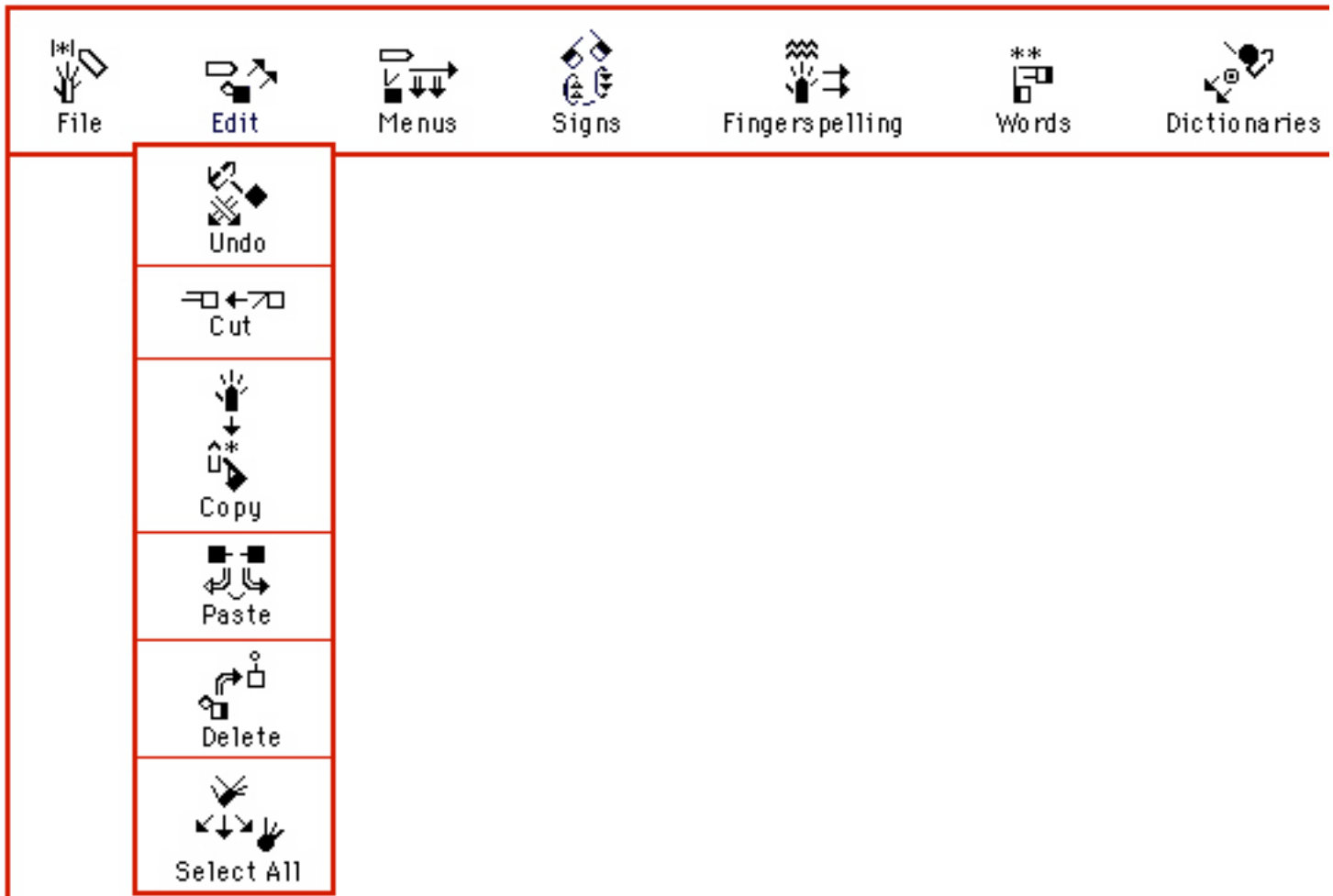
The standard Print dialog box giving a choice of A4 or US Letter size paper, plus a choice to Print to File (a postscript file to make a PDF). This is built into Mac OS X now, but other operating systems on Windows may not be so “cool”....perhaps XP has a way to automatically save to File?...if it does, then we don’t need to build it in...Our goal is to function well on Mac OS X and Windows XP.

Print Formats

SignWriter DOS has seven print formats that users are used to - different columns and sizes for postscript printers - plus landscape and tall....but the formats can wait if they are hard - Basic printing is needed first!

3. EDIT MENU

Commands available: Undo, Cut, Copy, Paste, Delete, Select All.



Programming Tasks Cut, Copy Paste

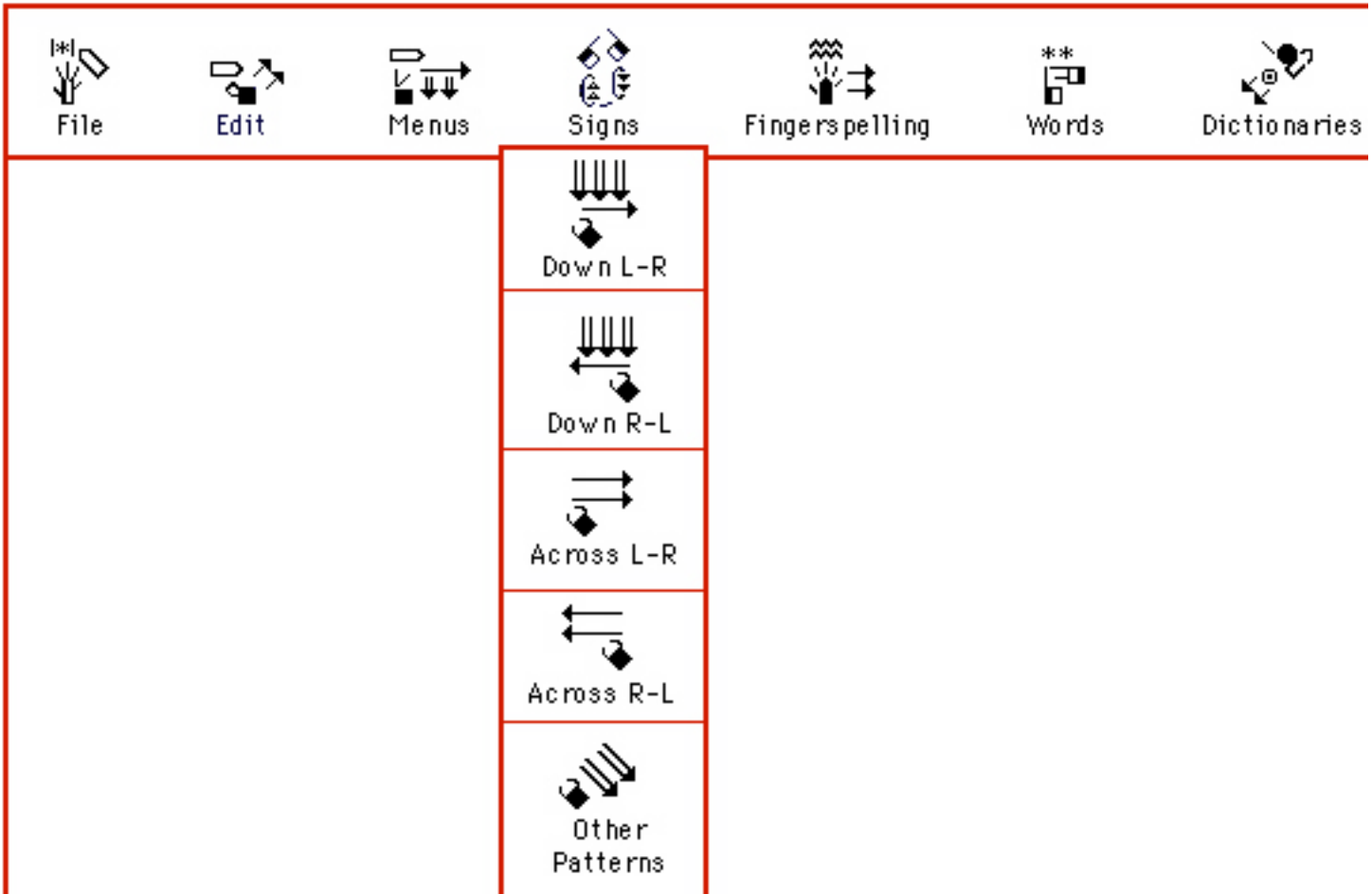
Cut, Copy and Paste

The commands “Cut” , “Copy” and “Paste” work a little bit, within the typing features of SignWriter, but not completely. They need to be programmed better, so they work with the standard keystrokes everyone knows...They should work for whole signs and sentences, plus individual symbols too....They do not work for individual symbols right now...

4. SIGNS MENU

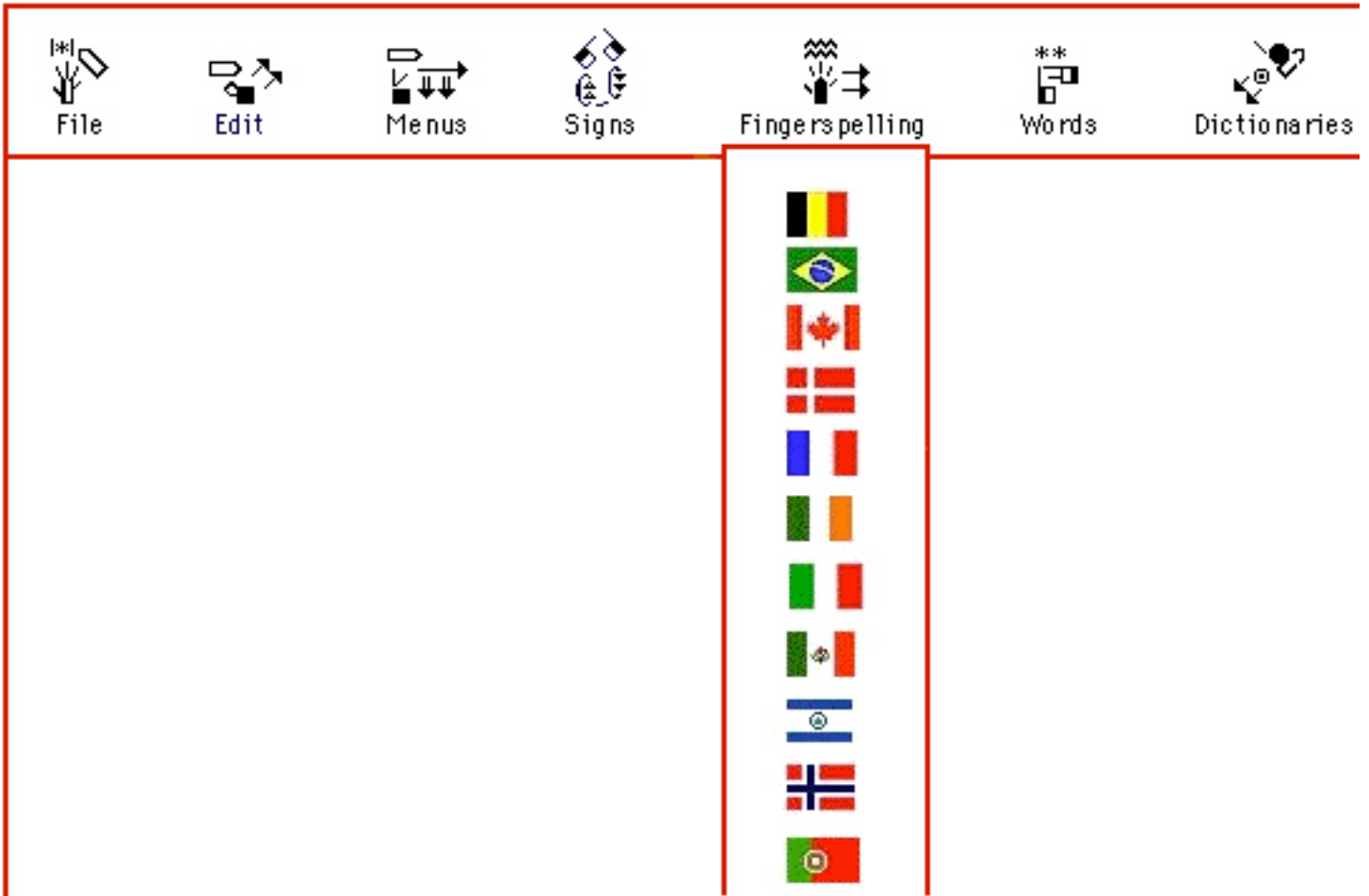
Sign Mode Commands should someday include a choice of **Typing Direction**. Vertical Columns is our preference and should be the default. But Horizontal Right to Left (for the Arabs) or Horizontal Left to Right (for the Europeans) is also necessary....

The current version of SignWriter 5.0 does not have this Menu. Right now, typing in different directions is done in the Editing Box, without any help from a Menu. So this Menu will wait until the next version of SignWriter, version 5.1.



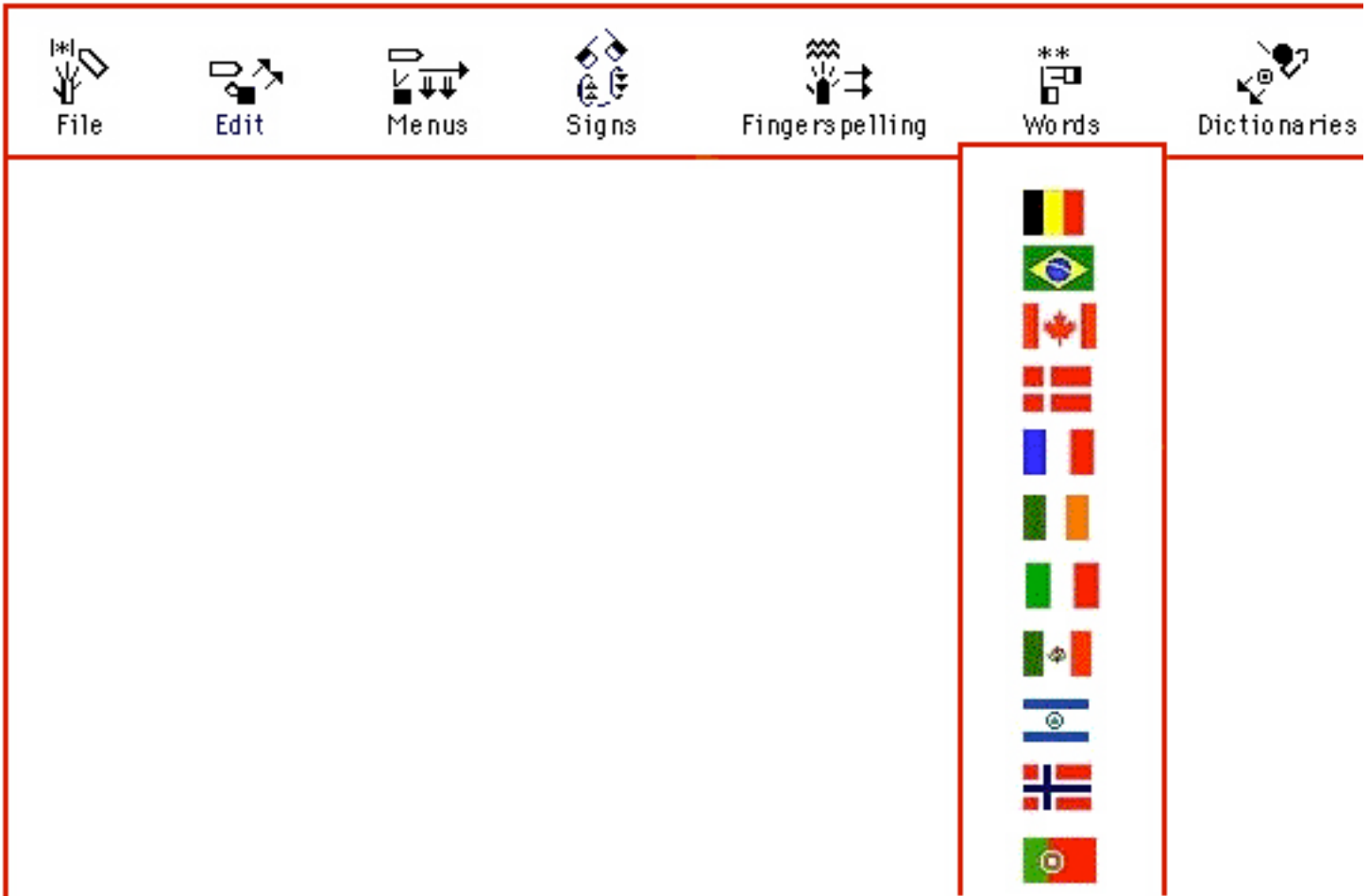
5. FINGERSPELLING MENU

Fingerspelling Mode Command should include choosing the country. Each country has a different Fingerspelling system. And the SignWriter 5.0 Keyboard Editor can create a different keyboard for each country, which should then be accessible under the Fingerspelling Menu, by choosing the flag for your country. But right now, there is no way to change countries. There is only one keyboard accessible at one time. So this is for SignWriter 5.1...



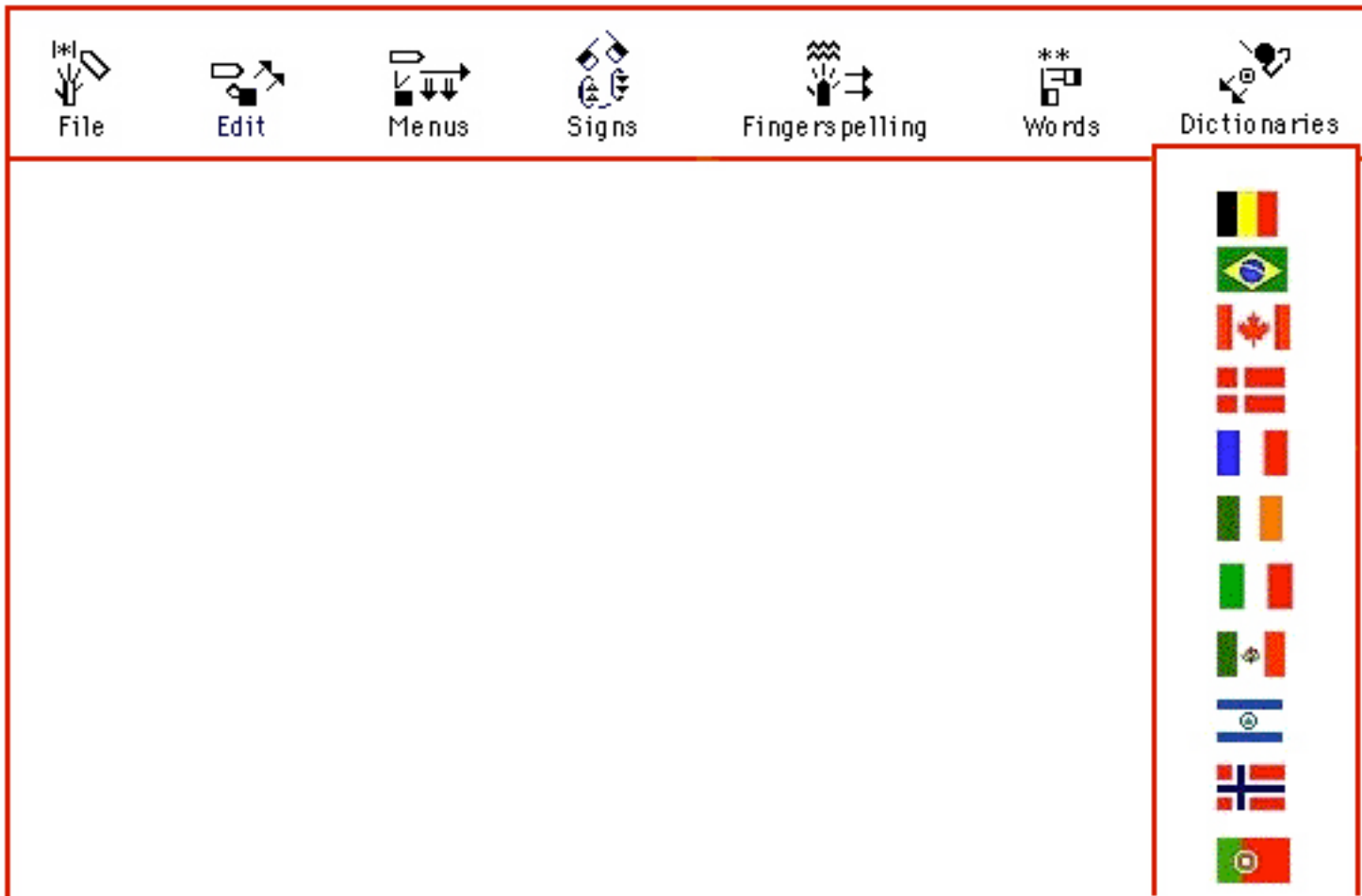
6. WORDS MENU

Typing spoken languages should include choosing the country of the spoken language. Since this is already built into many operating systems, perhaps when they choose the flag for “France”, the French alphabetic keyboard would be available?...taken directly from the available language preferences in their operating system. This is for SignWriter 5.1...



7. SignWriting DICTIONARY MENU

When a flag is chosen in the Dictionary Menu, the SignWriting dictionary for that country should now be available to the user. This is for SignWriter 5.1.



Programming Tasks

Multiple Dictionaries, Editing Dictionaries, Exporting Dictionary Entries

Multiple Dictionaries

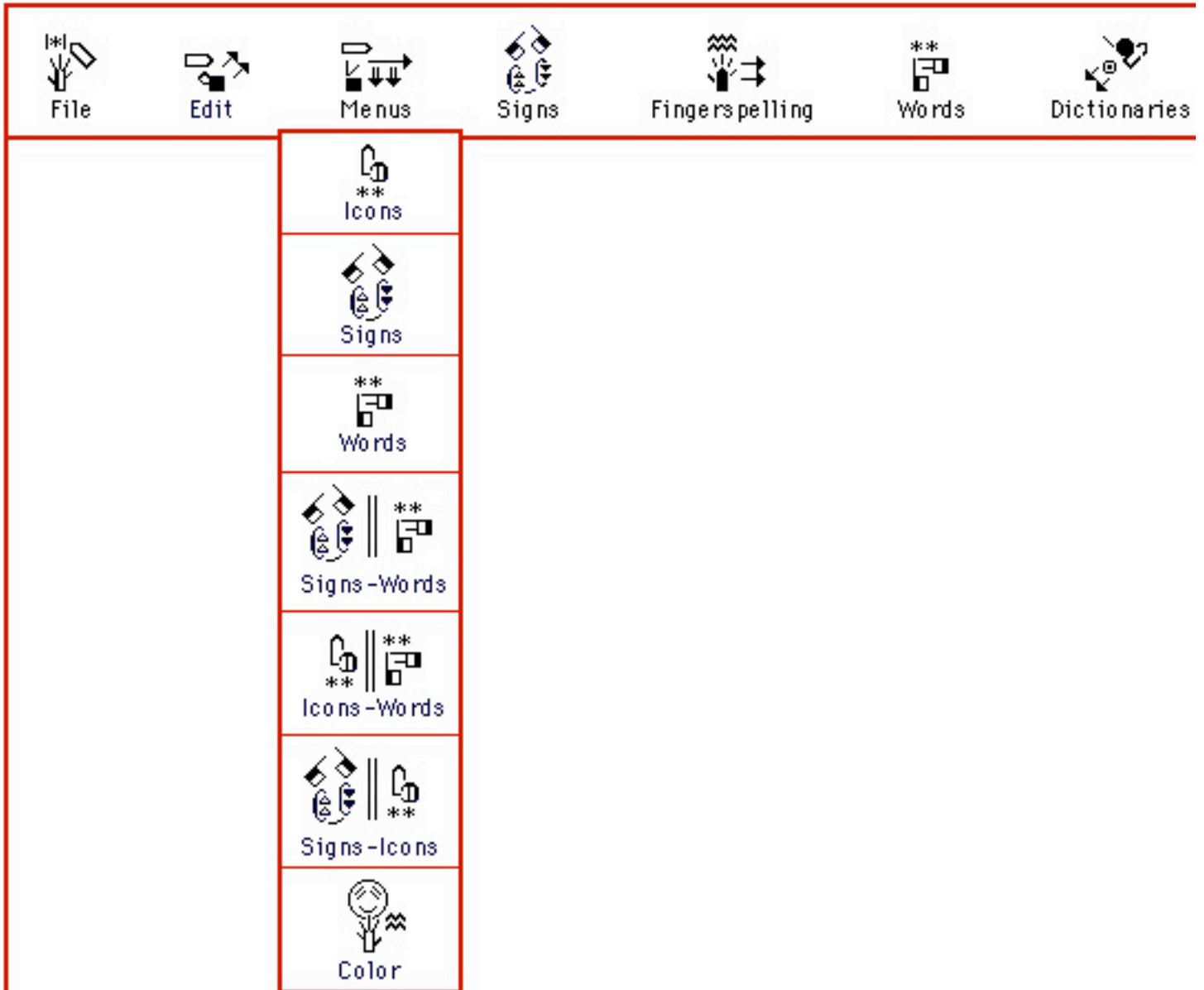
Right now, only one dictionary is available, but we need to be able to switch between multiple dictionaries.

Editing Dictionaries

Right now, the dictionaries are READ-ONLY, and are not changable. The Dictionary-Editing features of SignWriter DOS were never carried over to the Java code and they are sorely needed - I can detail the dictionary editing features for you. Perhaps they can be carried over from the DOS code?

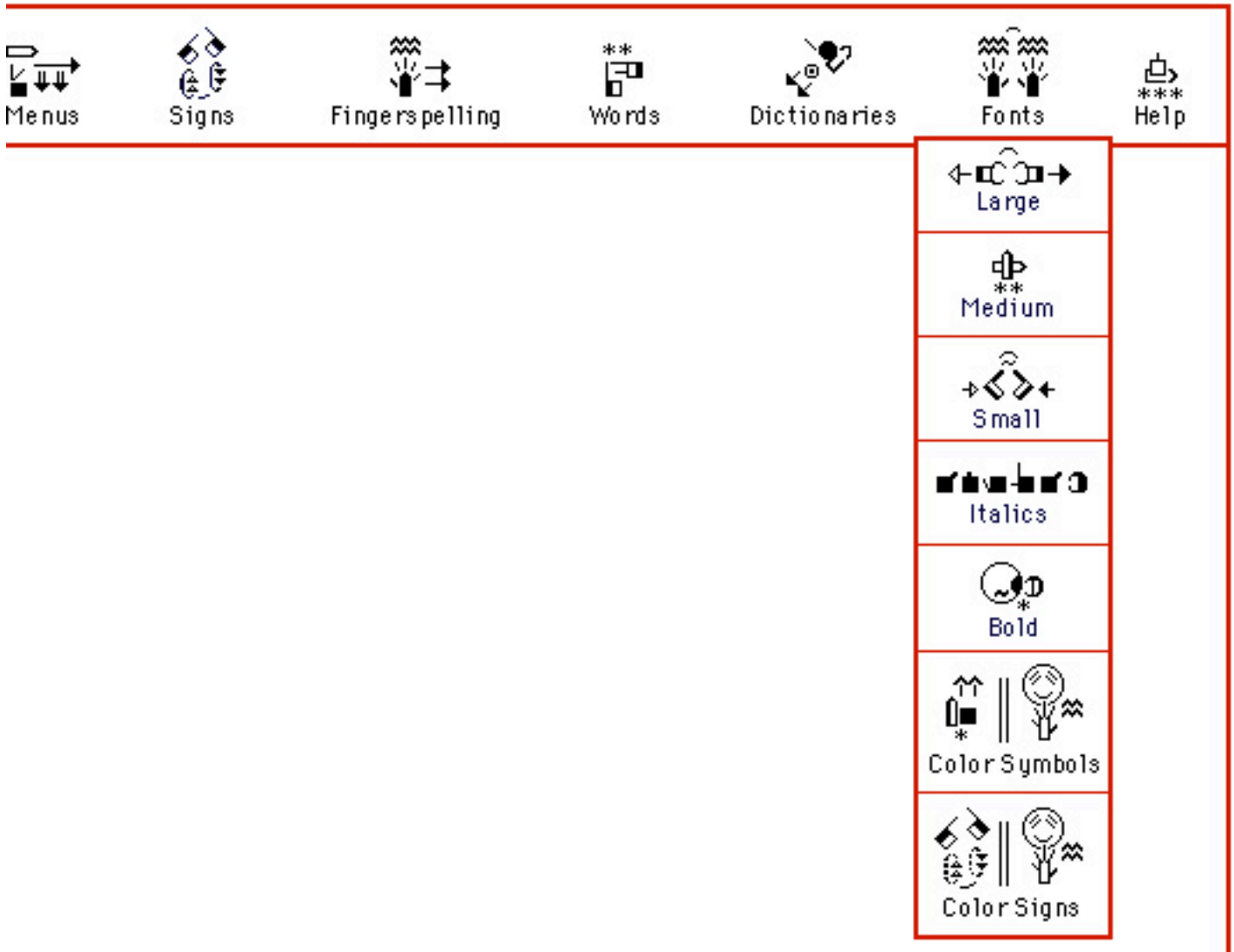
8. MENU PREFERENCES

This has to wait until SignWriter 5.1....



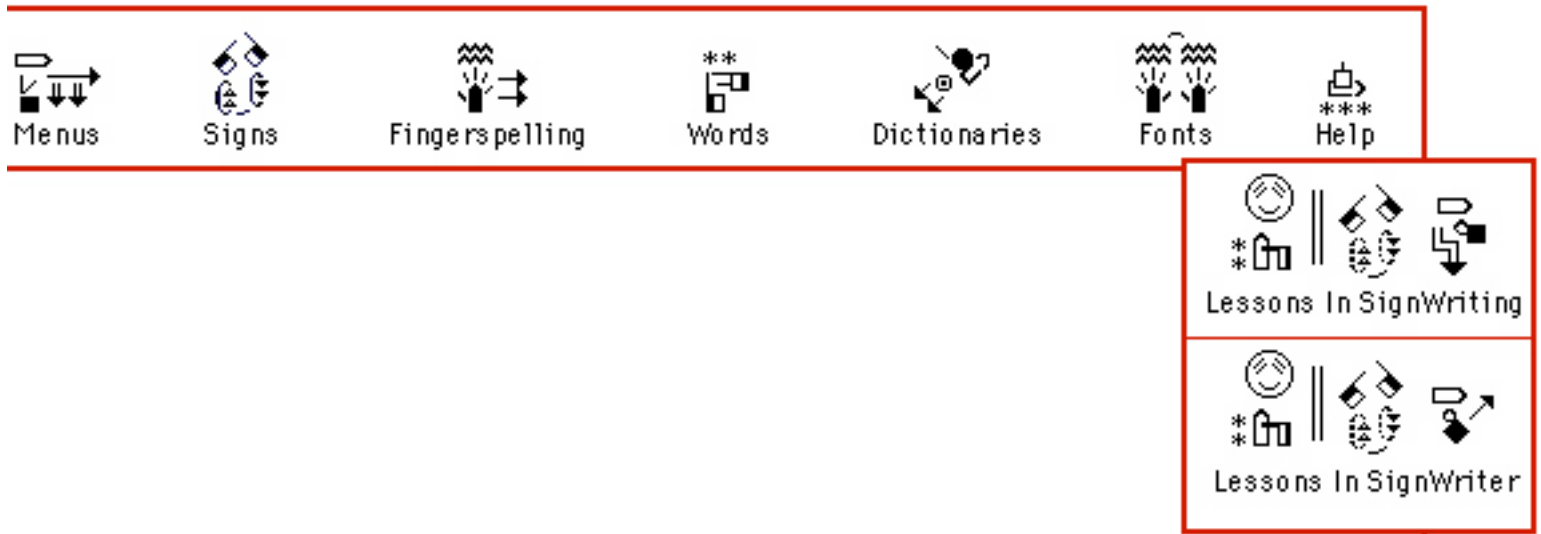
9. SIGNWRITING FONT PREFERENCES

Choices between SignWriting at different sizes and colors should be available someday. I will probably have to design unique symbol sets at different sizes. Right now, we only have one large size available. And someday, we need to be able to choose Unicode too...and TrueType fonts of different kinds...



10. HELP PREFERENCES

We now have a Lessons Database in SignBank 2002 in FileMaker. So it would be helpful if we can coordinate our two programs...SignWriter and SignBank...so they access the same Lessons Database....We already have a "Lessons in SignWriter DOS" manual and a Lessons in SignWriter Java" manual in that database. SignBank has a Runtime version so maybe the Runtime Lessons could be accessible within SignWriter Java?



11. Exporting Dictionary Entries in SignWriter Into SignBank 2002 Database

SignBank 2002 is a database built in Filemaker Pro 5.0 or later, for Macintosh and Windows. You can download the SignBank Programming Design summary, written by our FileMaker programmer, Todd Duell.

My understanding is that an XML StyleSheet (or is it an XSLT style sheet?)....needs to be created to match the java code in SignWriter dictionaries, with SignBank and FileMaker code...There is a web area called "FileMaker XML Central", that gives information on backside programming...or you can write to Todd Duell: tduell@formulationspro.com...

In the future we hope that entire SignWriter dictionaries could be automatically transferred into SignBank...possibly with SWML, the SignWriting Markup Language developed by Antonio Carlos da Rocha Costa in Brazil.